

History Of Neary-Hopcroft Adobe And City Related

Headliner Historic Site Preserved By State Purchase

Portal Is Entrance To 'Adobe'

'Adobe' Has Time-Honored Role In City's History

(Editor's note: The following history of the Santa Cruz Neary adobe was compiled by Mrs. Phyllis Patten of 409 May avenue, an interested member of the Santa Cruz Historical society. Purchase of the adobe as a historical monument was spearheaded by the society. An assembly bill, introduced by Assemblyman Glenn Coolidge of Santa Cruz, authorizing the expenditure of \$45,000 for the adobe was recently signed by Governor Goodwin J. Knight.)

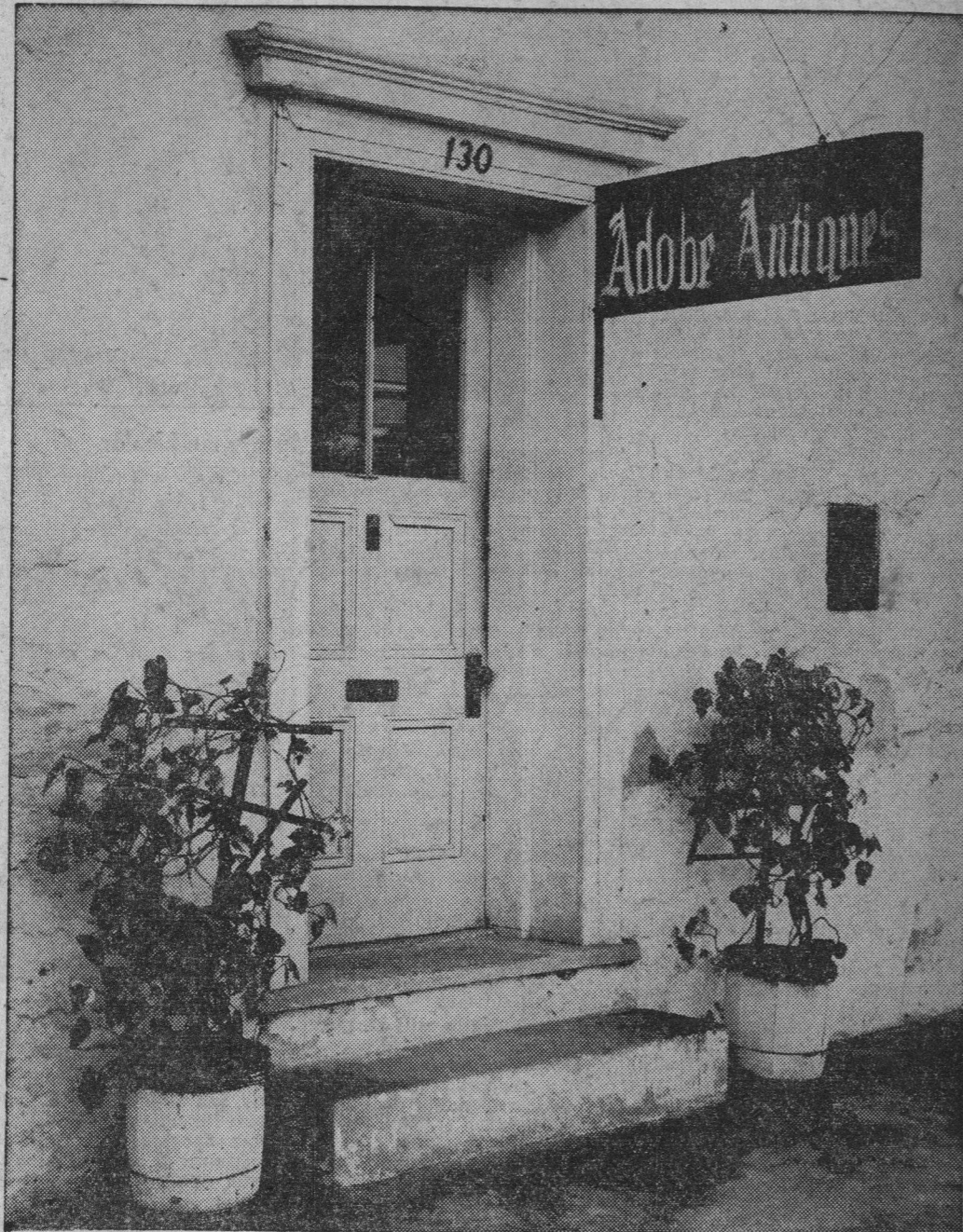
By Phyllis Patten

We must think back, visualize how the Santa Cruz area was when the first trespassers rode through here, October 17, 1769, headed by Don Gaspar de Portola, Friar Crespi, the recorder, and men. Except for Indian and animal trails from camp to camp or fishing places, it was a wilderness untouched by foreigners.

Following the coast line from San Diego (St. James) the Portola party were looking for Monterey bay, favorably described by Vizcaino in 1602. They reached a peninsula instead, planted a cross on a high hill and christened the place, San Francisco. With heavy heart in not finding Monterey bay they trekked back and camped again at what is today Carmel. Here they erected two crosses, one on the sand and one on a hill in full view of the ocean. On the latter, a note was fastened, "Escabas al pie y hallars un escrito." (Dig at the foot, there is writing). A note sealed in a bottle was buried there stating they had left December 9, 1769, to return to their starting point, San Diego. This is reiterated here to show the thinking and planning of those days' trail blazers.

In 1749 four Franciscan missionaries, all friends from youth, sailed for Mexico — Padre Junipero Serra, Padre Palou, Padre Crespi and Padre Verger. The center of this foursome was Padre Junipero Serra. He had taught philosophy in the Lullian university at Palma for 11 years, and received the doctorate in sacred theology even before his ordination. This shows the capacity of this presidente and his choice of associates which involves the Santa Cruz mission.

In Friar Crespi's diary is catalogued names of rivers as they crossed them. Our San Lorenzo was waded through on St. Lawrence Day, hence christened San Lorenzo. The next was a spark



This doorway, at 130 School street, is the entrance to the Neary portion of the "adobe,"

oldest building in Santa Cruz. Over the years, Santa Cruzans have pondered the history of

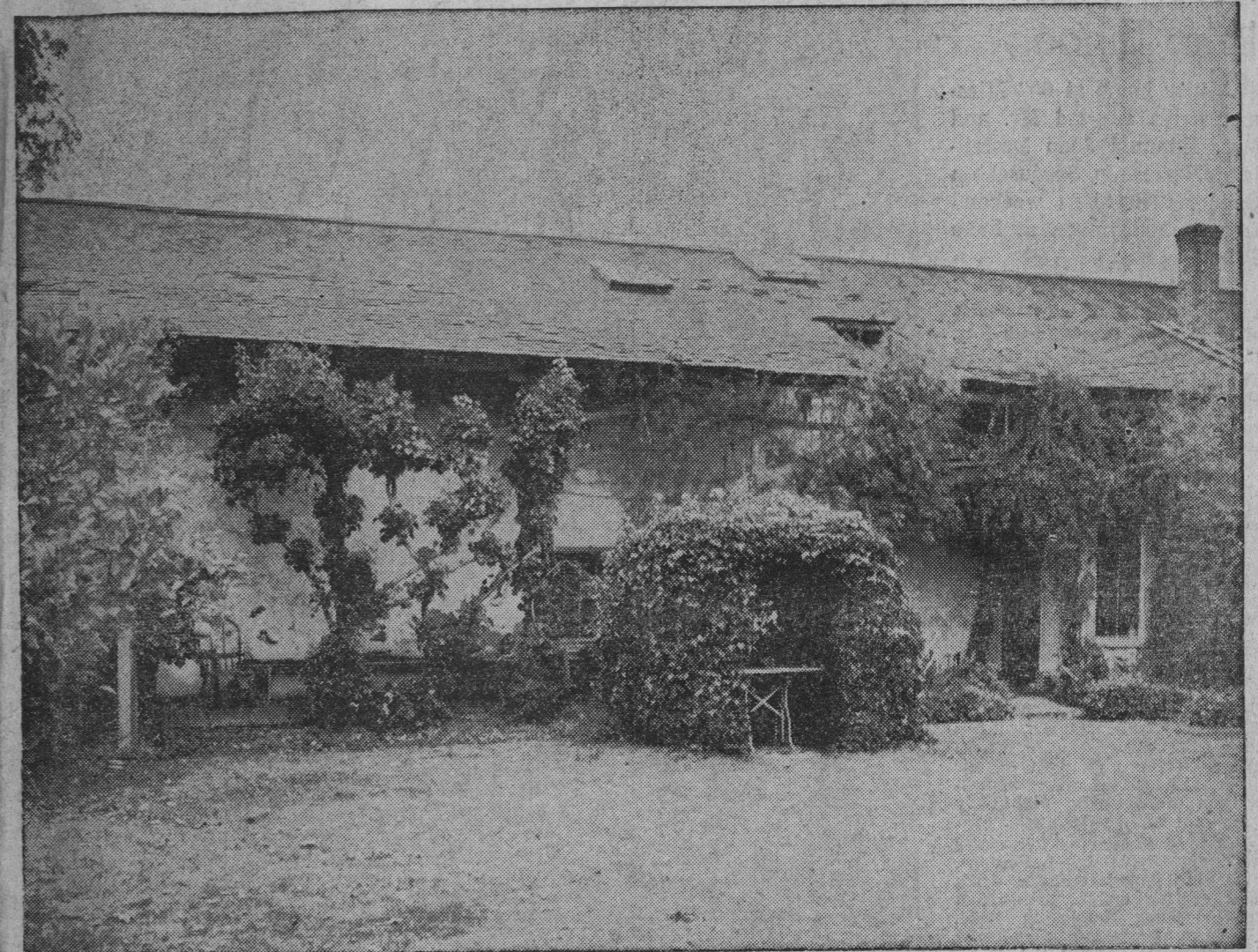
the adobe and thought about the men who built it for the mission.

on the north side of Mission hill, which was demolished by a flood, records state. Those who experienced the floods of (1940-41) and still larger, in 1955, know the volume of water that comes from those western hills. A gully behind former Logan heights shows torrential streams went down that way to converge with San Lorenzo's overflow, in the neighborhood where Santa Cruz Lumber company's office and

through to Mission street, including the entire present adobe, in 1838 from the Indians for two cows and two mules.

Suspense must have clouded the atmosphere of this unique settlement in the years 1824 to 1846. There were so many changes of orders and governorships; even to renaming the compound in honor of the governor. "Pueblo de Figueroa," which lasted only until the next change of Mexican

used to fry his tortillas on is in Mrs. Hopcroft's possession with other mementos of the mission era. The first welfare center was on School street, with the Sisters attending. Soon a wooden two-and-one-half story building was built to house the Sisters and orphans on the eastern part of the spacious lot bordered by School street on the north and Emmet street on the west, Mission street south and Rodriguez



This view of the rear of the well known "adobe" shows the back of the building which is the oldest in Santa Cruz and which boasts a history running back to the earliest days of the white man in the Santa Cruz area. Its story is told in the article which is printed today in The Sentinel.

Neary Adobe Now Is State Monument



concerned deserve unanimous public support and applause for their efforts towards acquiring this adobe guardhouse, a true relic and remnant of the Mission Santa Cruz. Its inception can safely be stated dates back 166 years ago — 1791, considering the purpose it was used for during that specific reign.

Thomas P. Malone Attends Meeting In San Mateo

Thomas P. Malone, a field rep-

ling clear stream "Santa Cruz," (Major's creek, inside city limits now), flowing more copiously then than today according to Crespi's diary. On the way from Loreto, Baja California, on their first exploratory venture in 1769 to Alta California, Presidente J. Serra remarked to his companions, "We'll reserve the title 'Santa Cruz' (Holy Cross) for one of the Missions.

San Carlos the second mission in Alta California was established June, 1770, Mission San Francisco, (Dolores today) in 1776 and Santa Clara in 1777. A group headed by Padre Palou in 1775 chose the coast route to reach San Francisco pueblo. On his return to Mission Carmel, Friar Palou excitedly reported to Presidente Junipero Serra the richness and glory of this location. "Not only is it a place for a mission, but also a pueblo. With all necessary requirements at hand. A bay for a port, timber, stone, fresh water, good soil and food for both stock and men." Plans were drawn, but Presidente Serra died in 1784 before the suggestion became a reality.

In 1789 Presidente Francisco de Lasuen came to inspect the site. He, too, was as enthusiastic as Padre Palou in its recommendation — most desirable and acceptable. Thus, the birth of civilization here was dedicated by planting the emblem of Christianity, the "Cross", September 25, 1791 and for Spain by Presidente de Lasuen, with neighbor padres and neophytes attending the first offering of the sacrifice of the mass. Evidently Padre Serra's associates remembering his remark before entering Alta California named the future mission, the twelfth to that date, "Mission La Exaltacion de la Santa Cruz." True to good neighbor policy, all established missions in the vicinity donated stock, feed and seed for the new mission.

The junction of streets: Water street, Mission street, Pacific avenue and River street leading to east, west, north and south is still referred to as the lower plaza even today, in a Spanish appreciation, and indicating activity was paramount in that area the first few years. The Indian trails stemming from this place seem to place this small area at the southern border of the first mission site or compound. There the important question enters. When was the guard house (the present adobe duplex) built?

It is like assembling a jigsaw puzzle with a few parts missing. Yet, with available records, and remnants visible today, the quarters for the military escorts and clergy were constructed first or simultaneously with the lower plaza mission. Because the compound was begun in the fall when inclement weather is to be expected, the shelter and safe storage must have been a first requisite. The strategic location of the adobe is another factor for its early existence. This being the twelfth link in the California mission chain, the padre and all concerned were well aware of possible invasion and hostilities. Survey over the four directions could be exercised from this point, including ships on Monterey bay. It is said a small chapel was hastily built on the flat presumably between lower plaza and the mission orchard located

In 1940 flooded parts of P. trero street were under three feet of water long before San Lorenzo overflowed. The mission orchard was located just beyond the present tunnel bordering River street. An Indian trail at that time, leading to a native camp named Pogonip — the tannery fire house and a stream, still carry the name today. According to available data one can imagine the 1791 church was located about where River street and Pacific avenue extensions meet, with the southern end of its spacious plaza at Water-Mission and Pacific avenue junction. And all this territory could be under observation from the guard house. Remember there was nothing on this plateau (Mission Hill) but brush, berry vines and a few trees that could easily be cleared.

Question — Who were the first to remove the chalk rock on the corner of Mission street and Pacific avenue extension? For what purpose? Yes, there was some removed in latter years, but who were the first to chisel the eastern jet of this plateau? It must have been started from the top level. Is it reasonable to speculate first, then for the chapel from the northeastern corner of the top level?

Or, having the advantage of experienced minds from neighboring establishments, both buildings could have been constructed simultaneously. However, if anyone has a better solution to the age of the Adobe it is, hereby welcomed.

The second mission was started 1793, dedicated 1794. The advance builders of a future mission settlement accomplished most needed requirements first. With brawn and determination, their engineering capacity was limited and fruitful.

The stream that meandered through the upper plaza and cascaded over the School street bluff, seems to have been channeled for domestic purposes, for that area in the earliest time. Another factor, about the Neary-Hopcroft adobe for consideration is, it seems to have stood alone detached from other buildings. Regardless of all guessing, it is an authentic, previous relic of the first compound, part of the embryo of today's beautiful city of Santa Cruz.

An alley formed in those days separating girls' and boys' sleeping quarters off School street still exists today, called School lane. The youths had to obey strict curfew under the padre's supervision, and the guard house was the chaperoned place for choir practice, parties, fandangos and even bull fights as related by Mrs. Hopperoff, a descendant of the first civil owners of the adobe. A unique feature of this dwelling is it has been lived in continuously since its completion.

Orders finally reached here from Mexico that all the missions be secularized and land was to be returned to the natives. It is evident that School lane was the dividing line of church and civil ownership. According to Mrs. Cornelia Hopperoff's memory, her foster great-grandparents, Jose de la Rodriguez, a former Branciforte soldier, acquired all the portion of land east of School lane from the northern brow straight

to come under the jurisdiction of the mission by then. In this era too, the existing powers decreed that pueblo Santa Cruz embrace the area a league distant in all directions from the mission or Mission hill proper.

Half of the adobe dwelling was sold to the Neary family, ancestors of the present owner, in 1865. Both Rodriguez's and the Neary's created beautiful gardens in their portion of land behind the building, extending to Mission street on the Neary side. This one grew to be an exceptional formal garden with shapely trimmed cypress trees and hedges. English ivy trailing on the pillars of the extended porch roof where wooden pegs used by the first builders are in view today, holding the timbers fast. A luscious green lawn, flowers and a small orchard. A huge spreading fig tree planted by the first occupants was already there, still bearing fruit until two years ago when gophers downed it by nibbling the roots to the surface. Then over went the ancient giant on its side.

In former years many parties or benefits were staged in this serene garden, canopied by old trees and protected from western winds by the big three-story convent for girls conducted by Sisters of Charity on the west side of the property. It's a perfect setting, too, for the production of excerpts from Romeo and Juliet on the Castilian rose-entwined balcony, still there but in need of repair today. Sometimes beautifully trained choruses sang from the convent windows which added much to the pleasantries of the afternoon teas.

The Hopcroft yard can boast a large avocado tree planted by her foster grandparents, also stones to grind wheat by mule power for flour.

School street and its vicinity can boast of many firsts. The first trading post was on School street conducted by a Mr. Beldon. The first duplex, the first hotel ("Eagle"), a two-story adobe on the corner of Emmet and School streets. The first American flag raised by Mr. Beldon for two days, until a messenger from Monterey retracted his mistake. The first wooden dwelling in Sylvar street. The first city reservoir at the end of School street, the first Methodist Sunday services by Mr. Elihu Anthony in one of the little adobes. The Masonic lodge was first organized upstairs in Neary adobe in 1854. Stairs to reach the hall were outside behind that section of the building. The first juzgado (courthouse); the first hospital was on this plateau, served by the "Sisters of Charity of St. Vincent de Paul." They were sent for by resident priest in 1862 to care for the youth in the compound. At one time in early years the population around the center was over 600. The Sisters occupied the "Eagle hotel." From it they served and taught what was required in the community at the time. One elderly Indian they cared for in his later years was Justiano Roxas, age 123 years or more. It is said he wouldn't lie on a bed, but wrapped himself in a blanket and slept by the fireplace in the hotel.

Roxas was a friend of the Rodriguez', too. A big flat iron he

the big three-story building replaced the former wooden structure. This was moved to the corner replacing the old adobe hotel. The interior was remodeled for classrooms, the half-story as an auditorium, then called Distribution hall. Entrance to the school yard was on School street for the day scholars. The living quarters housed more than 125 girls, from 2 to 18 years old in the late 90's.

The first mission bells that summoned the population in the little pueblo are still serving today. Salvaged from the earthquake ruins of the adobe edifice, they were melted and recast into one bell which tolls yet today from the tall steeple of the brick church. The first jail built of granite stood on a beautiful site here overlooking the mission orchards and valley. The upper plaza was an unhampered square where many were fed and fiestas were conducted by the community of the growing little city. It is recorded adobes lined all sides of it and both sides of School street. What a busy spot this plateau must have been in those early days. I am sure that many other "Firsts" have been overlooked because of incomplete records or have not been reached by way of "grapevine". But this must not be omitted, the first seeds of future civilization, law and agriculture here were sown from this little mission pueblo on Mission hill.

Historically, this little area is richly endowed with glory and strife.

It never yielded in defeat. Records state: "Although the building itself perished, it gained the distinction as the years passed that it was one of the few centers of religious activity that was never to see a lull in its religious work."

The springboard of industry, education, and Christian living, the nucleus of the present county of Santa Cruz. Many changes transpired in a short space of time. Indian domain to Spanish influence, then to Mexican reign and secularization, finally Republican in 1846. But the spirit of St. Francis of Assisi, whose cloister was barred with stripes of sunset and its roof the stars, four walls of sky, with corridors of air leading to chapel and God everywhere was the essence of these dedicated Franciscan padres, who without chart or shoes (Poverellos) accomplished much as true lovers of Christ and His way of life.

In 1891 Santa Cruz citizens contributed and built the beautiful Gothic, a three aperture granite arch at the entrance of the church yard commemorating the 10th anniversary of the founding of the mission. The stone and solidarity of the structure is emblematic of the faith of the founders, both clergy and civil.

Stop to look at it when passing by, read the gilted carving on the face. The whole is an expressive memorial to those who hallowed the ground the arch is anchored to. Again this St. Francis spirit must still prevail today on this area because a portion of former Mission property in the hands of private ownership for a few years is again in the possession of those who are dedicated to God and country. The Historical society and all

representative for the Mutual of New York Life insurance company, has been attending a special training forum in San Mateo this past week.

Through meeting certain requirements, Malone was invited to attend the forum, a specialized course for Mutual of New York underwriters.

Methods by which an individual can use the social security law as a basis to help build a well-rounded family security and retirement program, and various other phases of life insurance and accident and sickness coverage were discussed.

Malone is president of the local 20-30 club.

PUBLIC NOTICE

NO. 14,969 NOTICE OF SALE OF REAL ESTATE AND PERSONAL PROPERTY LOCATED THEREON

In the Superior Court of the State of California, in and for the County of Santa Cruz.

In the Matter of the Estate of HENRIETTE K. GITTINS, Deceased.

Notice is hereby given that the undersigned Administratrix with the will annexed of the estate of Henriette K. Gittins, deceased, will sell at private sale to the highest bidder for cash and subject to confirmation by said Superior Court on Tuesday the 30th day of July, 1957, at the hour of 10:00 o'clock A.M. or after said day, at the law offices of Emmet L. Rittenhouse, Room 4, Rittenhouse Building, in the City of Santa Cruz, County of Santa Cruz, State of California, all the right, title, interest and estate of the said decedent at the time of her death, and all the right, title and interest that the said estate has by operation of law or otherwise acquired other than or in addition to that of the said decedent at the time of her death, in and to that certain real property described as follows:

SITUATE in the County of Santa Cruz, State of California, and

BEING a part of the land conveyed to Arthur H. Krusemark and wife by deed dated March 19, 1951 and recorded March 26, 1951 in Volume 815 page 566 Official Records of Santa Cruz County, and described as follows:

BEGINNING at the Eastern corner of said land; thence South 44° 30' West along the South-easterly line of said land, 227 feet to a point; thence on a line parallel with the Southwesterly line of said land, North 43° 30' West 155 feet to a point on the Northwesterly line of said land; thence along last named line, North 44° 30' East 85 feet to an angle and North 45° 30' West 30 feet and North 44° 30' East 100 feet, more or less, to the Northern corner of said land of Krusemark; thence along the North-easterly line of said land South 57° 45' East 185 feet, more or less, to the point of beginning.

TOGETHER with a Right of Way over the present travelled road leading in an Easterly direction from the above described parcel of land to the State Highway.

TOGETHER WITH the kitchen range and the refrigerator situated and being located on said above described real property and used in connection therewith.

Bids or offers are invited for said property and must be in writing and will be received at the law offices of EMMET L. RITTENHOUSE, Room 4, Rittenhouse Building, Santa Cruz, California, attorney for said administratrix, or may be filed with the clerk of the said Superior Court of the State of California, in and for the County of Santa Cruz, or delivered to said administratrix personally at any time after the first publication of this notice and before the making of said sale.

Terms and conditions of sale: Cash in lawful money of the United States of America, ten per cent of the purchase price to be paid on date of sale, balance on confirmation of sale by the Court; title expense to be borne by the purchaser. Dated: July 9th, 1957.

HETTY COX Administratrix with the will annexed of the Estate of Henriette K. Gittins. Deceased.

EMMET L. RITTENHOUSE Attorney for Administratrix July 14 to 23



The famed Neary adobe, pictured above, the oldest building in Santa Cruz, now is a state historical monument as a result

of the signing by Governor Knight of a bill introduced by Assemblyman Glenn Coolidge of Santa Cruz to authorize the

expenditure of \$45,000 for the adobe. Leading the campaign for the purchase was the Santa Cruz Historical society.

PUBLIC NOTICE

NOTICE OF SALE OF REAL PROPERTY AT PRIVATE SALE No. 14,980

IN THE SUPERIOR COURT OF THE STATE OF CALIFORNIA IN AND FOR THE COUNTY OF SANTA CRUZ.

In the Matter of the Estate of CLOVIS ALONZO FARNSWORTH, also known as C. A. Farnsworth, deceased.

NOTICE IS HEREBY GIVEN that the undersigned, as Administratrix of the estate of the above-named decedent, will sell at private sale to the highest and best bidder upon the terms and conditions hereinafter mentioned and subject to confirmation by said Superior Court on July 29, 1957, at the hour of 10 o'clock A.M. or thereafter within the time allowed by law, at the offices of Smith & Zeller, 515 American Trust Building, Stockton, California, all right, title, interest and estate of said Clovis Alonzo Farnsworth, also known as C. A. Farnsworth, at the time of his death and all right, title and interest that said estate has acquired, by operation of law or otherwise, other than or in addition to that of said decedent at the time of his death, in and to the real property situate, lying and being in the County of Santa Cruz, State of California, more particularly described as follows, to wit:

BEING Lot 12, in Block "E," as the same is shown and designated on that certain map entitled, "Subdivision No. 2 Seaciff Park, being a part of Aptos Rancho, Santa Cruz, County, California, surveyed by Lloyd Bowman, County Surveyor, Sept. 1924." Filed for record in the office of the County Recorder on October 10th, 1924, in map book 18, page 54, Santa Cruz County Records.

Bids or offers are invited for said property and must be in writing and will be received at the offices of Smith & Zeller, 515 American Trust Building, Stockton, California, attorneys for said Administratrix, or may be filed with the Clerk of said Superior Court or delivered to said Administratrix personally, at any time after first publication of this notice and before making said sale. Said sale will be made upon the following terms:

Cash, ten per cent (10%) to accompany bid, balance upon delivery of deed; cost of policy of title insurance to be borne one-half by purchaser and one-half by estate; taxes and insurance to be prorated as of date of delivery of deed; and revenue stamps on deed to be supplied by estate. DATED: July 1, 1957.

ANNA W. FARNSWORTH, Administratrix of the Estate of Clovis Alonzo Farnsworth, also known as C. A. Farnsworth, Deceased.

SMITH & ZELLER, 515 American Trust Building Stockton, California. Telephone HOWard 49495 Attorneys for Administratrix. July 5 to 22

O-Lee-Ta's
Distinctive Gifts
Now open at new location next to Bigelow Garage No. Felton on Highway 9.
Phone DE 6-5702

NOTICE OF HEARING Application No. 185

Notice is hereby given of a public hearing to be held by the Santa Cruz County Planning Commission, in the Auditorium, Veterans Memorial Building, 846 Front Street, Santa Cruz, California, on July 31, 1957, at 1:30 P. M., upon the application of P. Earl Stuart, for the purpose of considering the granting of a variance from the regulations of County Interim Zoning Ordinance No. 484, allowing a residence to be built ten feet (10') from the front property line and five feet (5') from the rear property line, on property located on Seaciff Drive, Assessor's Parcel No. 42-094-09 and part of 42-101-04.

For further particulars reference is made to application on file in the office of the Santa Cruz County Planning Commission, 842 Front Street, Santa Cruz, California.

DATED: July 9, 1957.
SANTA CRUZ COUNTY PLANNING COMMISSION HENRY A. JOHNSON, Planning Director. July 21

NOTICE OF HEARING Application No. 195

Notice is hereby given of a public hearing to be held by the Santa Cruz County Planning Commission, in the Auditorium, Veterans Memorial Building, 846 Front Street, Santa Cruz, California, on July 31, 1957, at 1:30 P. M., upon the application of Robert J. Saleeby, for the purpose of considering the granting of a variance from the regulations of County Interim Zoning Ordinance No. 484, to construct a residence 3 feet from the north property line and 4 feet parallel with the south property line, on property located on Lot 24, Block 73, Subdivision No. 6, Aptos Beach Country Club Properties.

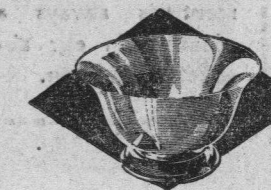
For further particulars reference is made to application on file in the office of the Santa Cruz County Planning Commission, 842 Front Street, Santa Cruz, California.

DATED: July 18, 1957.
SANTA CRUZ COUNTY PLANNING COMMISSION Henry A. Johnson, Planning Director. July 21

We
always
include
an unseen extra!



Into every package we hand you, we put years of experience and expert knowledge. Together with our continuing efforts to serve our community better, and the cordial atmosphere we create, they add up to our reputation. This precious extra adds nothing to the weight or to the price of your package — but increases its value considerably.



Shockley
JEWELERS

1205 PACIFIC AVE.
GA 3-7070

TAKE ADVANTAGE OF OUR
SUMMER CLEARANCE SALE
OF SILVER-PLATED HOLLOWARE