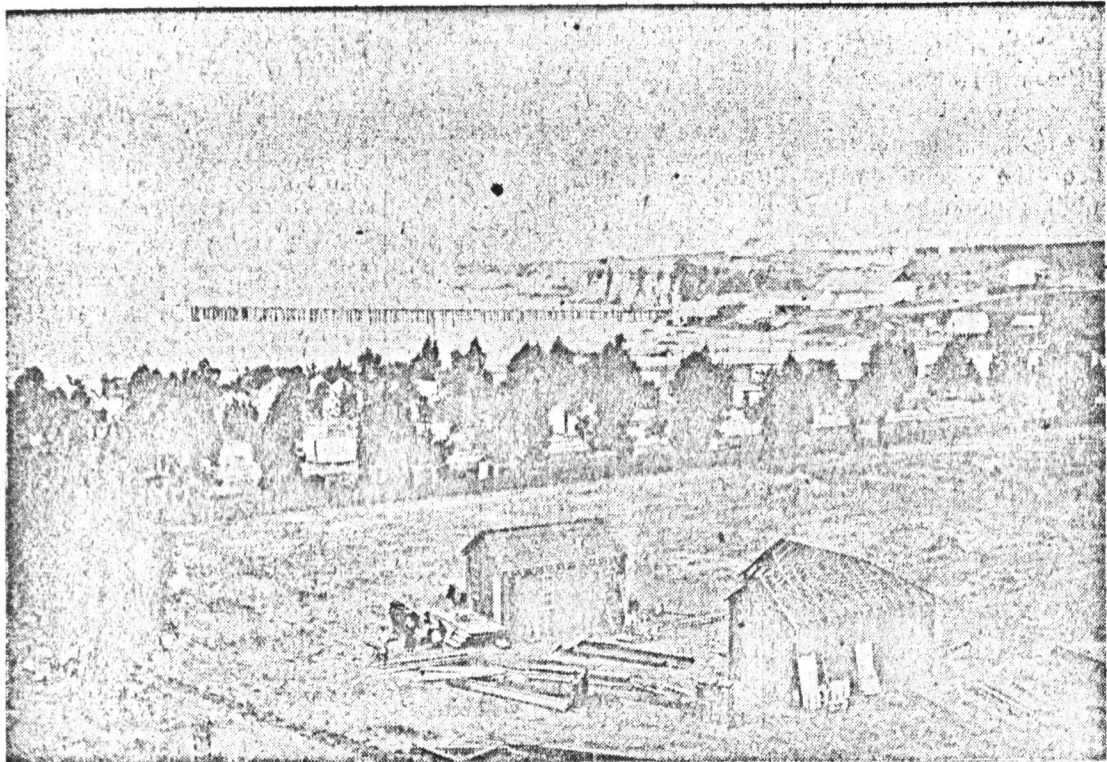


Santa Cruz Yesterday



IN THE DAYS OF "CAMP CAPITOLA"

(From the Preston Sawver Collection)

When the above glimpse of the past was photographed by Watkins, a famous traveling cameraman, our neighboring resort had barely graduated from the status of "Soquel Landing."

The picture, dating to the seventies, is one of the oldest known of what is now the county's third city. F. A. Hihn's development activity there, as "Camp Capitola," was still young.

A wharf had been built to serve Soquel as a shipping point, in the late fifties. Location was that of the present one, from which the old Soquel Landing road (now Wharf road) ran back along the heights west of the creek until it dropped down into Soquel.

A long wharf, prominent in the background, above, is possibly the original. The first buildings in Capitola were warehouses, a couple of which can be seen near the landward end of the wharf.

S. A. Hall, former ship-

pen-ter, builder of the picturesque Soquel Congregational church, did carpenter work for Hihn during the development of Camp Capitola. Later he was, in business there. Among his pursuits was the renting of bathing attire to vacationers.

Horse and Buggy Days

The latter came by horse and buggy or stage coach until the Spring of 1876 when the narrow gauge Hihn railroad between Santa Cruz and Watsonville started operations, and built a depot at Capitola.

An early day writer, in describing an earlier expression of "See Venice and die," wrote "Soquel and live."

About this time the resort was seeing the "Camp" begin to fade from the name of the blossoming beach town.

Said the same writer, "The very location makes Capitola a favored

place with the devotee of nature's charms. Located in a protected cove where Soquel creek pours its sparkling waters into the bay, it is completely sheltered from disagreeable winds . . . while at the same time the balmy atmosphere is rendered fresh and salubrious by the pleasant breezes from the bay.

"Capitola lies where a delightful view may be gained of the foothills and mountains, while Loma Prieta's summit rising in the distance adds to the scenic beauty."

Once Capitola was known as a resort by F. A. Hihn, measure and precaution in the name of sanitation has been taken to enhance its natural health-inspiring conditions. Pure mountain water is supplied to the town by the Hihn company's water works.

The picture was obtained through the kindness of Mrs. Ida Reanier.