

Santa Cruz Beautiful Formati House Styled After Italian Vill

Planned New Home For More Than 20 Years

(Editor's Note: This is No. 40 in the Sentinel-News' regular Wednesday visits to "The Homes of Santa Cruz.")

By Jewel E. Woods

Patterned after the villas they remembered in their native city, Genoa, Italy, the home of Mr. and Mrs. Chris. Formati, 950 West Cliff drive, has been attracting the attention of passersby since its completion nine months ago.

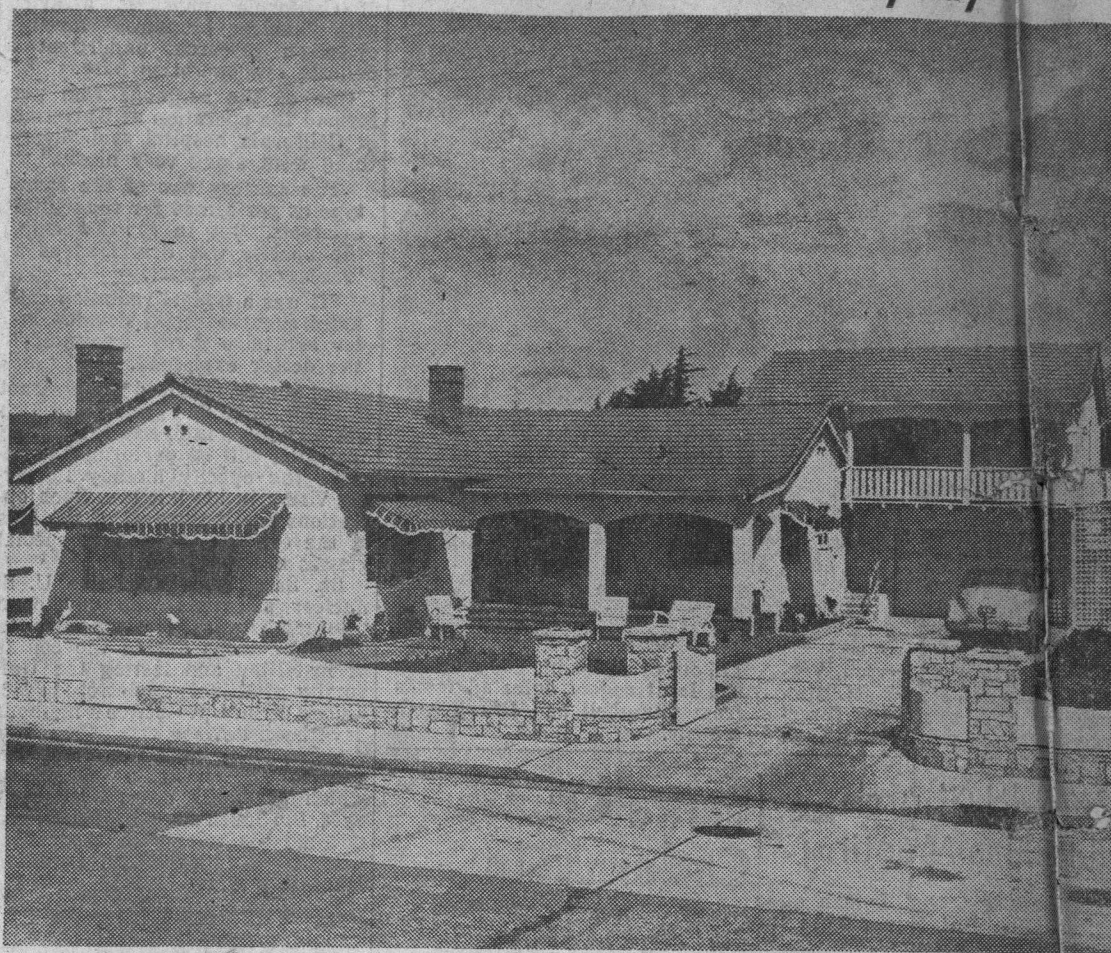
To a cliff-side setting, overlooking blue Monterey Bay, the residence has brought the tiled terrace, the balcony, the tiled roof and the story-and-a-half effect which might have been transplanted from some Genoa hillside.

"We built our home here," said Mrs. Formati, "because of all the cities in which we've been, Santa Cruz reminded us most of our memories of Genoa. The climate is much the same, and the bay looks like the Ligurian Sea." (Mrs. Formati came to the United States in 1919, and her husband a number of years before.)

The house, designed by Architect Charles Lawrence, incorporates a great many of Mrs. Formati's ideas — "I've been planning this home for 20 years."

"For the last 20 years," said

Wide Windows Give View Of Monterey Bay



This view is taken from another part of the Formati's property, the semi-circular plot directly across the street, and in

front of the residence. The plot, since its purchase recently by the couple, has been graveled and equipped with three benches, so

that now they and their guests can sit at the edge of the cliff and watch the bay.

★ ★ ★

Mrs. Formati, "my husband and I have been coming to Santa Cruz for the summer. Each time we'd come, we'd drive along West Cliff drive and park our car at the spot across the road in front of our house—the place that's now graveled and has the benches. And we would sit and wish that we could have a home, right at this spot. Now we have it, and it's like a dream come true."

For the last four years, after their retirement from business in Stockton, the Formati's have lived in Santa Cruz, on Buena Vista avenue, and many of the final arrangements for construction of their present nine-room residence were completed at that time.

The house, which contains 3500 square feet of floor space, two kitchens, two tile-fronted fireplaces, and a complete, finished basement, was erected by Contractor Leonard English.

Built on a 100x140-foot lot, the couple also purchased the 100x125-foot lot at the rear, which, in addition to providing extra grounds, gives them room for a run for their Great Dane dog, and space

bath, were included in the building plans.

The guest kitchen, generously tiled, and the unusually attractive bath, with its frosted glass door leading to the shower, are on the first floor. The guest living room and bedroom, furnished with soft-green carpeting in sculptured wool and lined oak Monterey-style furniture, are over the garage at the side-front of the house, and are reached by an easy, carpeted flight of stairs from the short hall, which has an outside entrance and which takes off from the kitchen. The upstairs rooms have a door leading out to the front balcony, and their two wide, picture windows permit an unobstructed view of the bay waters.

Carrying out the villa theme, rooms throughout the house have been finished in fine-grained plaster, in a slightly roughened texture, and delicately tinted. Sunny rooms have been done in pale green or blue, and the others reflect a light peach tone.

The rectangular living room, which extends across one half of the front of the house, and which

"bird-cage"-based lamp holding trailing philodendrons, have been placed on the window side of the living room, to balance a long, low, square-tufted lounge, upholstered in light burgundy wool, along the opposite wall. Nearly every room in the house contains a radio, and the one in the living room is a walnut console at one side of the mirror-topped fireplace.

The dining room, like the living room, is carpeted with soft green sculptured wool and is furnished with a dark-toned Duncan Phyfe set. The heatolator-equipped fireplace here is fronted with light brown tiles, and also has a mirror above it, with twin hurricane-style lighting fixtures mounted on the mirror itself.

The dinette section of the listening white kitchen is entered from the dining room. This section, furnished in lined oak, has a view window of the bay.

Walls, ceiling, and cupboards of the remainder of the kitchen are enameled in shining white, with touches of color added by the coral-red tile which edges the white-tiled work surfaces along the

Hot And Cold Water For Outdoor Barbecue



This extra-large barbecue is located on a patio at the back of the house. It is equipped with a tiled sink, with hot and cold running water; a large brick oven, which actually bakes; and an adjustable grill, as well as with a fireplace for heat. Small build-

ing, just beyond at the left, is an aviary containing parakeets. At the right foreground is a corner of the long, tile-topped table for serving. Off the patio is a door leading to the full basement beneath the house, part of which has been equipped with a white kitchen sink unit and a modern

range, for supplemental cooking facilities at barbecue parties.

Enjoy
LAWN-CUTTING DAY!

"PILOT" A
PINCOR

AMERICA'S
OUTSTANDING
POWER LAWN
MOWER



For smooth, effortless mowing, PINCOR has everything you've ever wanted in a Power Mower!

Four cycle 1½ H.P. engine—20-inch cut—hand adjusted cutting height ½" to 2½"—all steel construction—chain sharpener—chain wheel and reel drive—lifetime lubrication and many other features.

It makes to choose from starting at

\$89.50

Sales and Service of Hand and Power Lawn Mowers

BOSSO'S Hardware

Mission & Center Sts.

PAINT NOW WITH

Glidden

Endurance HOUSE PAINT

Pure, white lead base. Self-cleaning. Whiter white.

\$5.63

BOYSEN

1st Paint SALE

CIMARELLI'S
Little PLUMBER

for their three-room trailer. The latter comes into frequent use on the couple's many interesting trips.

As mentioned before, the house contains two kitchens — not to mention another complete kitchen arrangement in the basement, to supplement the large, outdoor barbecue (where the sink contains hot and cold running water).

Reason for the double culinary departments: the Formatis enjoy having their son-in-law and daughter and little grandchild visit them, and they felt if the young couple had quarters of their own when they came to visit, they'd be more comfortable. So, three rooms at the back of the house, one of them a complete kitchen, right off Mrs. Formati's modern kitchen, and a living room and bedroom, and a

commands a magnificent view of the ocean from its 16-foot-wide picture window, has walls of pale green, and a deeper tone of the color has been used in the hand-made, polished tiles which front the fireplace.

More than 100 yards of an imported, smooth-finished fabric went into the making of the draperies for the living room. Like all the other draperies throughout the house, they were custom-made of three thicknesses of material — the patterned drapery cloth, a fleecy interlining, and a solid-toned drapery fabric for the back. Imported linen was used for the draperies in the dinette section of the kitchen.

Twin small sofas, covered in an aqua-green brocade, and separated by a low, round walnut cocktail table, centered with a tall, brass

walls. One tiled area contains the twin sinks, with inset spray unit, and the other is separated to provide space for the recessed electric range, which is at the same height to provide an unbroken line to the eye. Scalloped wood valances over the range and above the window over the sink, together with corner shelves with scalloped edges, add a decorative touch. Other touches of color are added by the matching coral-red scatter rugs on the floor, on the inlaid linoleum, and by bright items of china or flower pots on the corner shelves.

The house has a T-shaped system of hallways, connecting the bedrooms, and the main bath. This latter, finished in blue and white tile wainscoting and floors, is actually three separate rooms — one containing the washbowl in the center of built-in cabinets along one wall, another the bathtub, and the other the toilet. Each can be shut off from the others by a door.

