

Sunday, December 27, 1959

t May Add Life Span

artificial heart for humans would require a larger motor for longer wear.

"There must be an automatic regulator to provide varying pumpage for relaxation and full body activity. The pump and motor would be easily serviced during a few days in a hospital at intervals of several years."

Thus far, Fry said, animals have been sustained only for periods long enough to check body functions upon recovery from anesthetics following the installation operation.

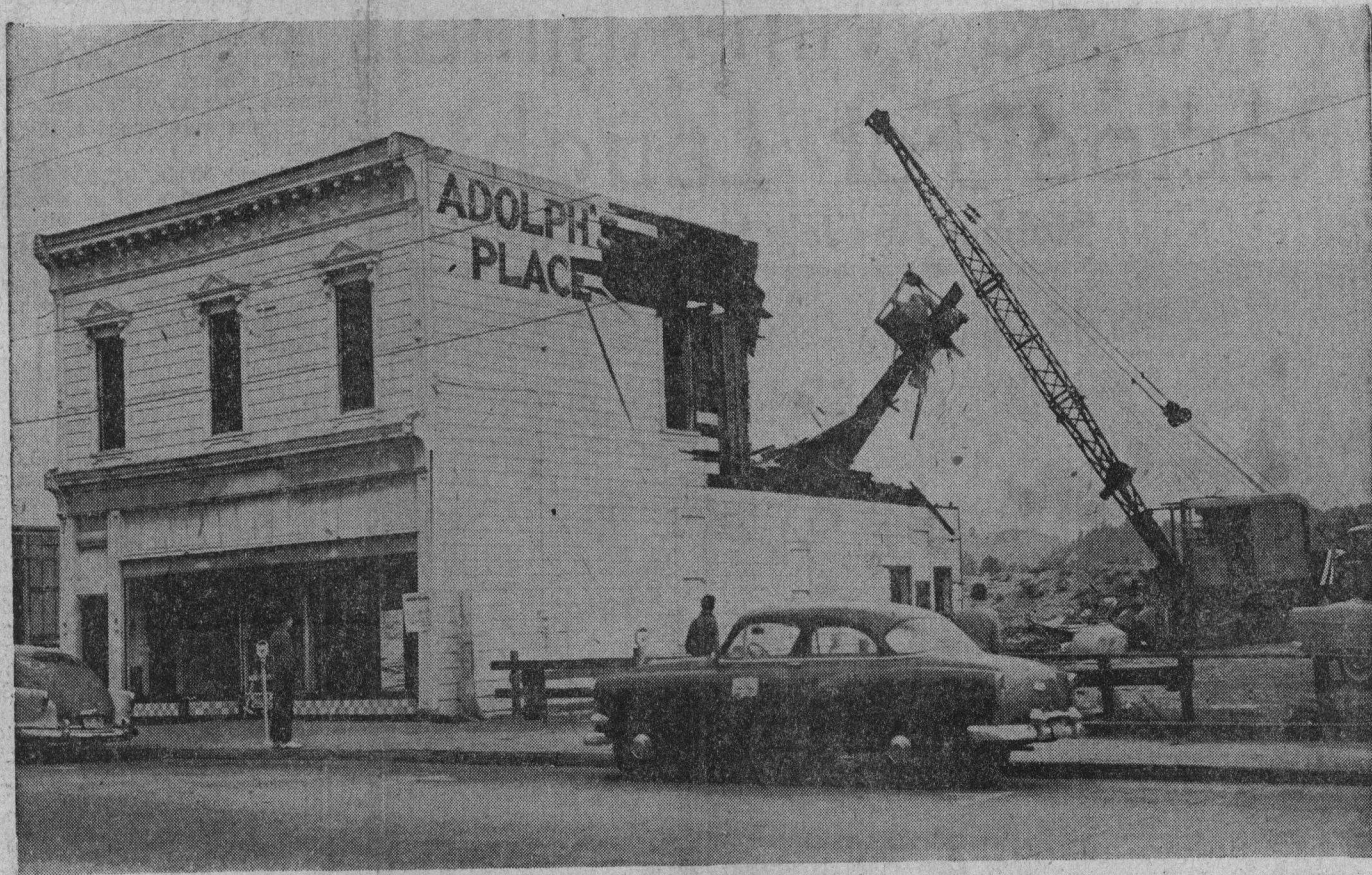
Surgical techniques adequate for installation of the mechanical heart have been developed. It is primarily a matter of grafting and connecting veins and arteries.

Once installed, the heart is seated within the chest cavity, and the opening is healed. Only the wire for connection to small batteries protrude from the body.

Batteries may be strapped to the leg. The patient would have a kit containing spare plug-in batteries for use while alternate batteries were being recharged. Also possible is a plug-in cord for a home wall socket with a current reduction device for connection to the heart.

Mrs. Allegrini

Adolph's Becomes A Splintered Memory



A giant, clam-shell bucket bites into the gutted remains of Adolph's Place, 812 Front street, long a gathering place for admirers of Italian cuisine

◇ ◇ ◇

and conviviality. The owner-operator Camarlinghi family, displaced by the San Lorenzo Park redevelopment project, is priming to open new quarters near the intersection of Market

and Water streets. The demolition and burning of Adolph's and a partially destroyed residence in the eastern portion of the project Wednesday marked

◇ ◇ ◇

completion of Granite Construction company clearing work. Several other structures remain to be razed by other contractors.