

BRIDGES MADE OF SAND FALL IN THE SEA, EVENTUALLY



WILDER RANCH, 1930



WILDER RANCH, 2005

CHARTING CHANGES ON COAST

By **ROGER SIDEMAN**

Sentinel staff writer

Environment

9-29-06

SANTA CRUZ



NATURAL BRIDGES, 1900



NATURAL BRIDGES, 2006

Radical changes are afoot in Santa Cruz. You won't find them at a local protest or government hearing. Rather, they are changes to the natural environment, specifically coastal landmarks.

They're captured in a series of photographs taken over a relatively short span of time, geologically speaking. The photos date to the days shortly after the camera was invented 140 years ago, and they are presented in a new book by local geologist Gary Griggs and architect Deepika Shrestha Ross.

Released last week, "Then and Now: Santa Cruz Coast," offers a

pictorial history of Santa Cruz County from Davenport south to Rio del Mar. Historic photographs are juxtaposed with new ones taken for the book from identical locations.

West Cliff Drive looks the way it was when the Spaniards arrived in 1769, a coastal terrace devoid of any vegetation

Coming Sunday

■ Take an in-depth look at the county's newest public land, Coast Dairies.

LOCAL NEWS

Coast

Continued from Page A1

except low grasses. Natural Bridges State Beach more closely resembled its namesake in 1900 before two of its three arches collapsed during heavy ocean swells.

One challenge facing the authors was making the modern photos of a drab cityscape interesting and informative next to their evocative images of a more romantic past.

They write: "The grand 100-year-old hotels and resorts, Victorian ladies in broad brimmed hats and horse-drawn wagons have given way to buildings of dubious architectural merit and seas of asphalt and parked cars."

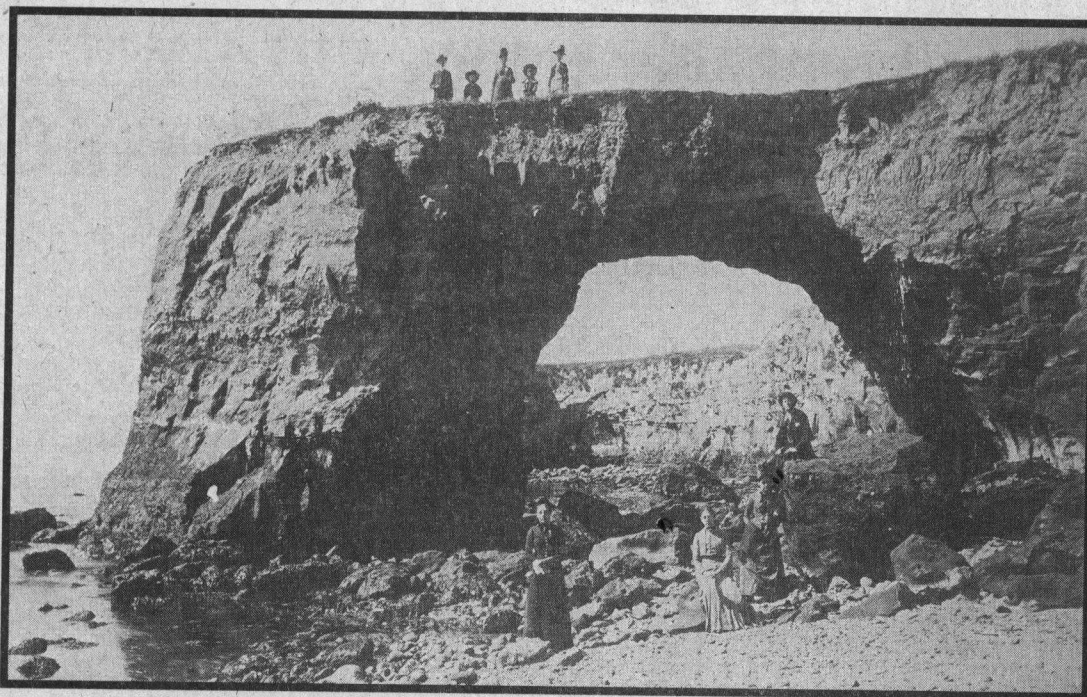
Behind the 100 pages of old photos culled from museums, libraries and private collections, Griggs and Ross tell a tale of life before humans intervened with armored seawalls and protective riprap, built to combat waves that have pummeled houses, condos and apartments.

The message for readers to take away, Griggs hopes, is how rapidly the coast is changing as rising sea levels erode it away.

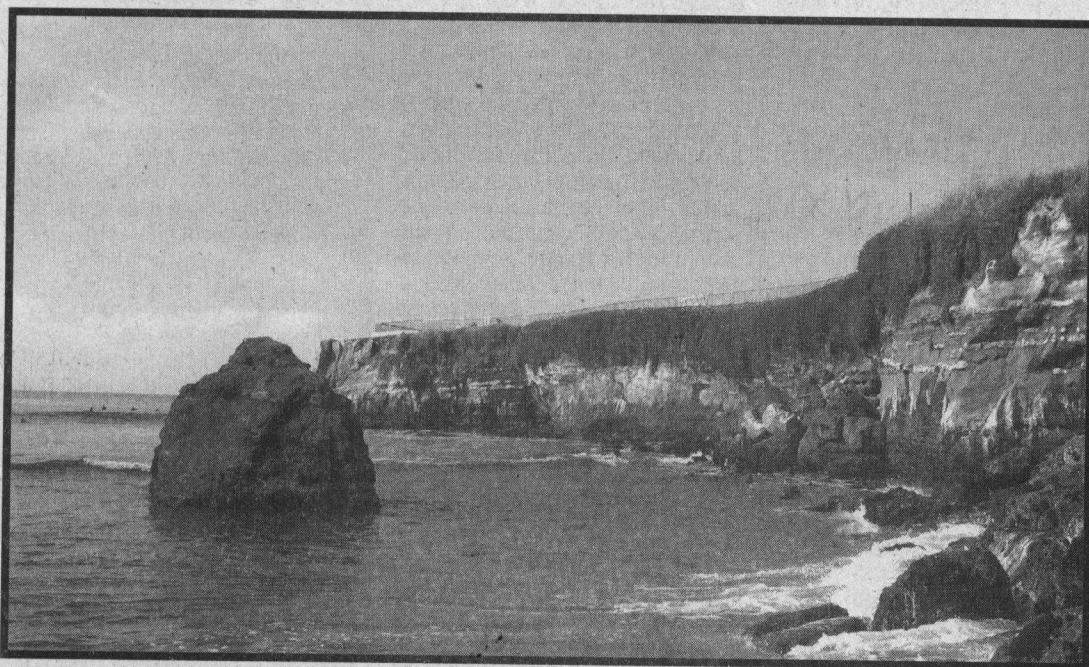
"If history tells us anything about the coast it's that anything built on the shoreline should be seen as temporary," he said, noting the hazards of coastal construction.

"Residents of that time appear to have had a much greater respect for the temporary nature of the shoreline and, unlike today, when multimillion-dollar homes are built as close to the ocean as possible — some even right on the beach — the old houses were set back a reasonable distance from the edge of the cliff or bluff."

Griggs directs the UC Santa Cruz Institute of Marine Sciences and has lived on the Central Coast for 38 years. His 2005 book, "Living with the Changing California Coast," a more text-heavy look at the state coastline, was used in a course Griggs teaches, but he said the information would be useful to civic planners, real estate agents and just about anybody living close to the coast.



STEAMER LANE, 1887



STEAMER LANE, 2006

Photos courtesy of 'Then and Now: Santa Cruz Coast'

The Book

WHAT: 'Then and Now: Santa Cruz Coast,' by Gary Griggs and Deepika Shrestha Ross.

WHERE TO BUY IT: The Bay Tree Bookstore on the UC Santa Cruz campus; Bookshop Santa Cruz, 1520 Pacific Ave., Santa Cruz.

PRICE: \$19.99

Friday Dinner Specials

Pork Roast - \$7.99

Salmon & Shrimp

Cakes - \$8.99

SANTA CRUZ DINER

909 OCEAN ST. • 426-7151
GREAT FOOD PRICED RIGHT!

McCarty's

WINDOW FASHIONS

Blinds • Shades

Sales • Repair

449 May Ave • 475-4321