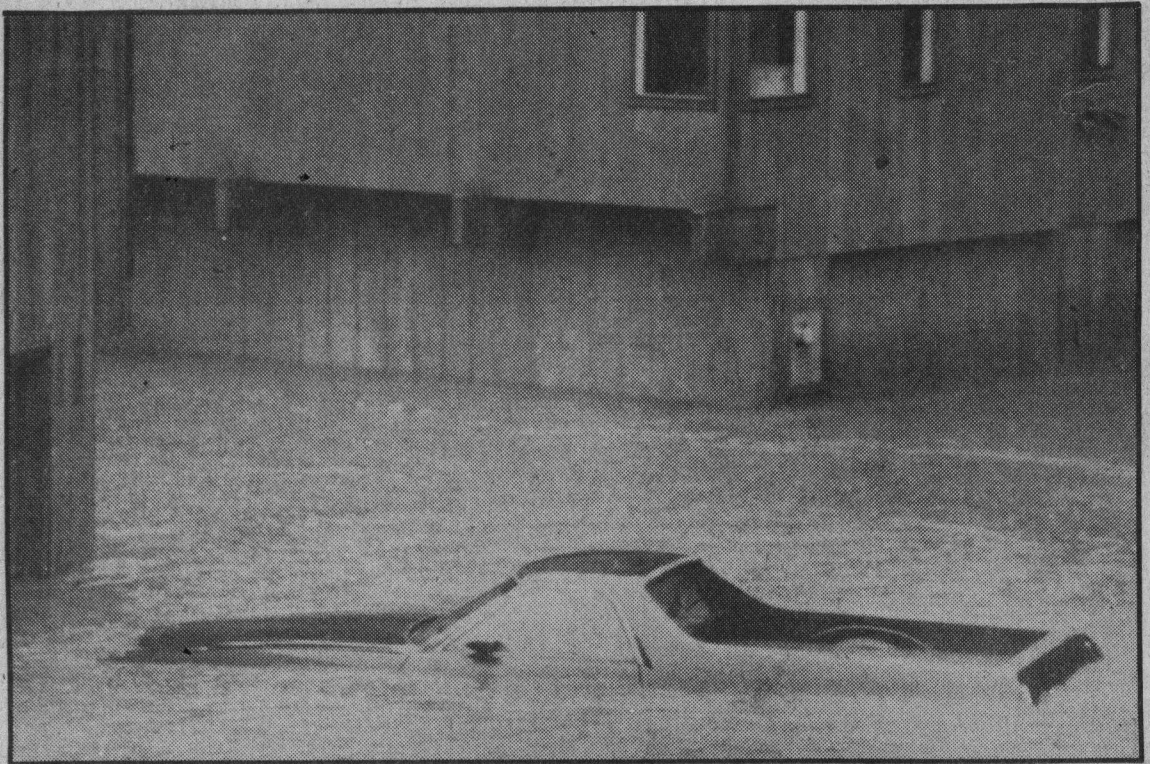


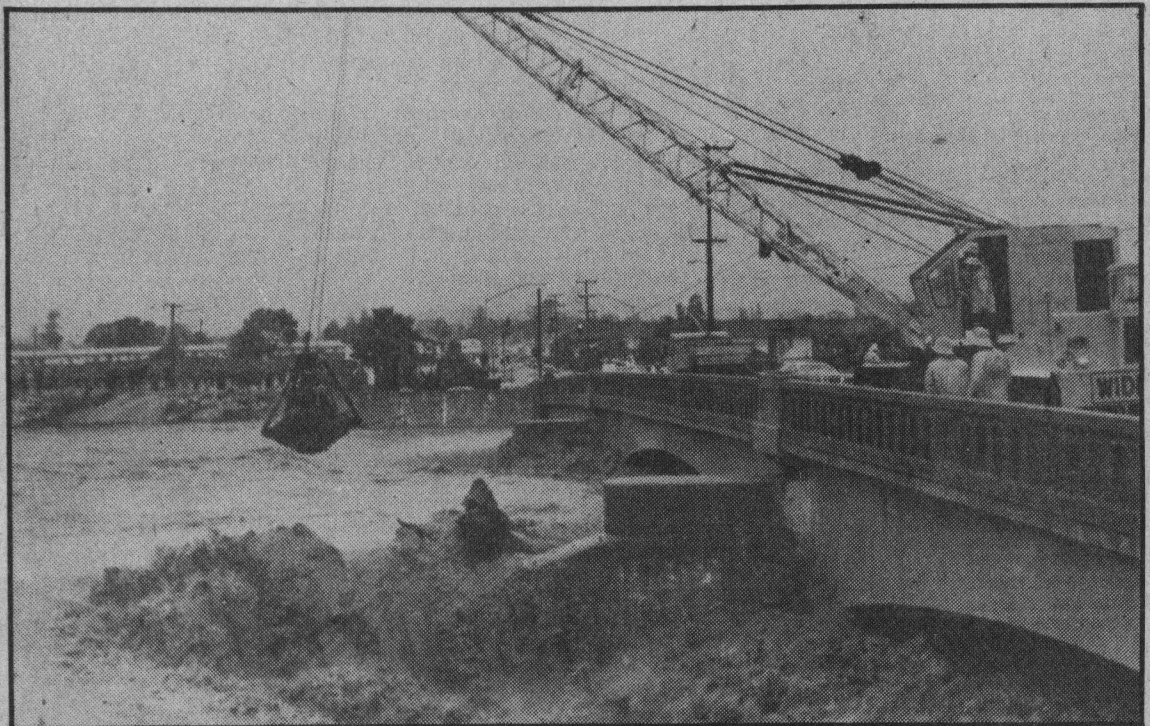
6-5-82

More High Water Scenes

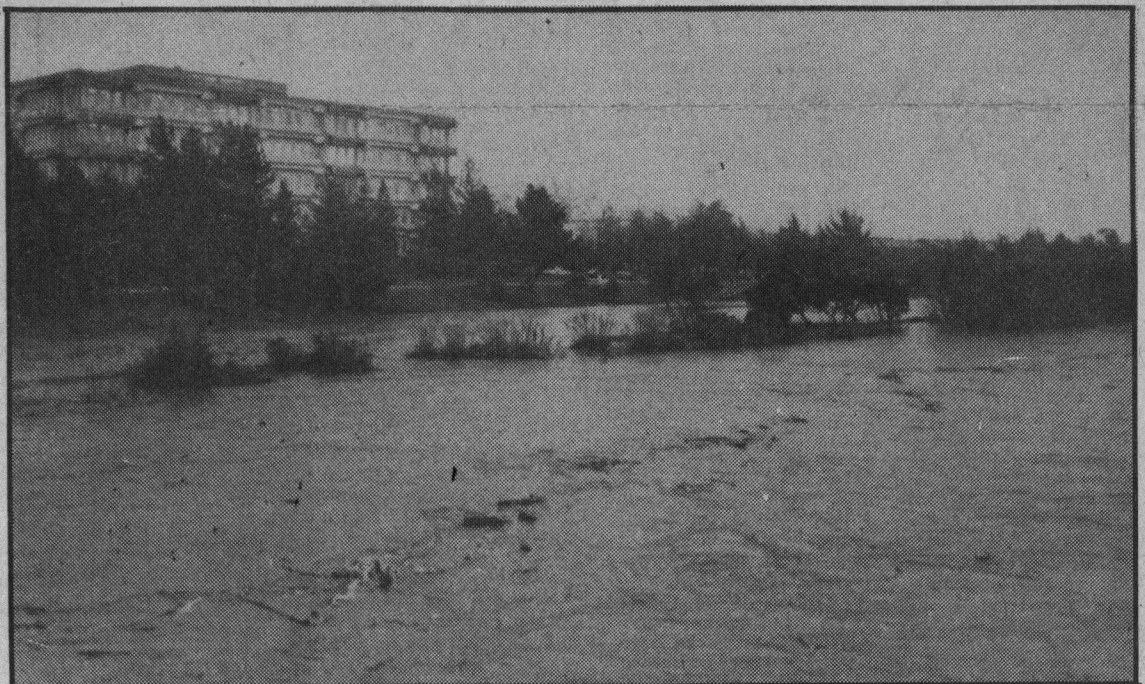
Sentinel photographs by Pete Amos and Bill Lovejoy.



A Ranchero sits in water along Wharf Road in Soquel.

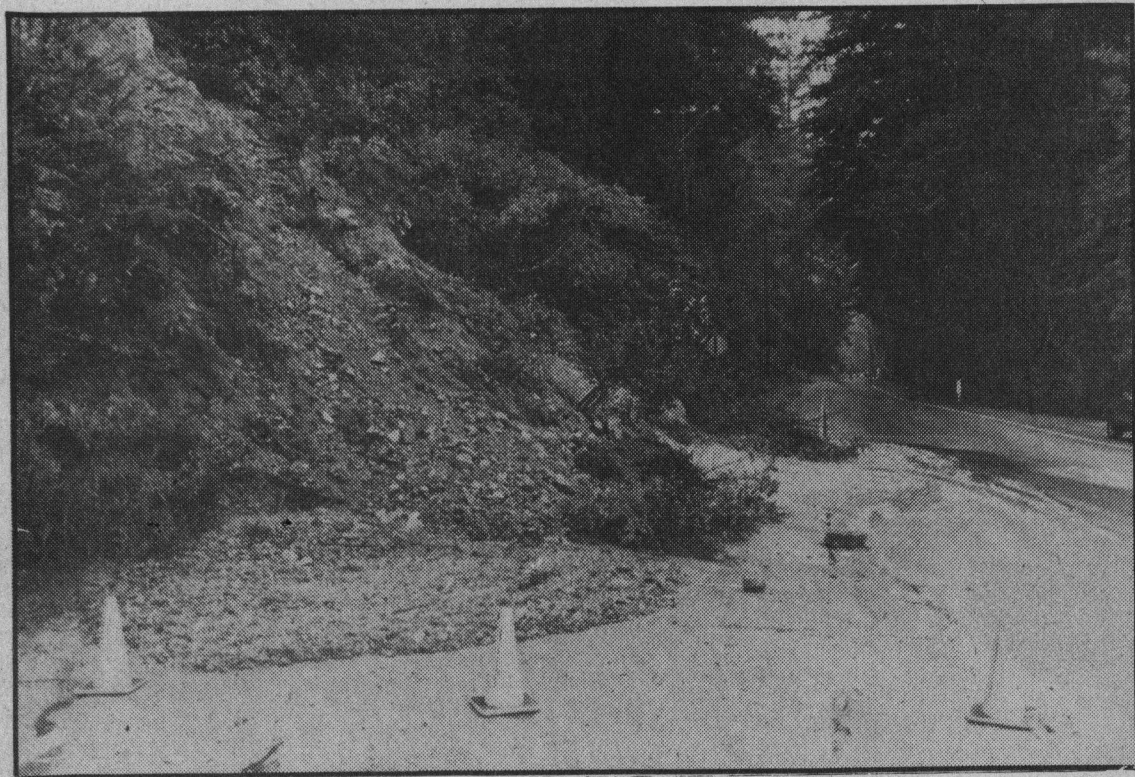


A crane lifts debris from under the River Street bridge.



The raging San Lorenzo River in front of the County Center.

The raging San Lorenzo River in front of the County Center.



A mudslide blocks Highway 9 at Glen Arbor.