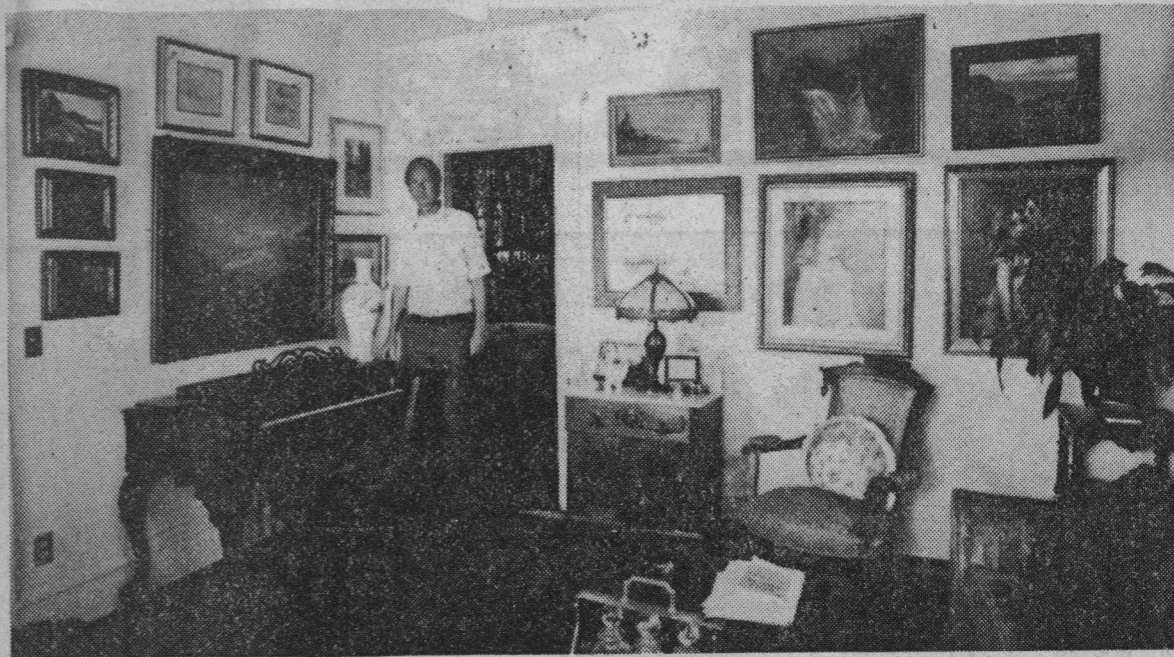


Historic Houses



The Perry House today, above, and as it looked when its architect-carpenter John Perry stood on the front porch, below. Pete Steen stands in the living room, far right; melodeon dates from early 1800s; dining room and kitchen have original floors; downstairs bathroom is a veritable "garden" of vines, flowers, painted by Donni Tunheim.

House With Charm





Perry House

This classic example of the "gingerbread era" was built by John B. Perry in 1852 or 1853, on the Southeast corner of Mission and Union Streets, originally.

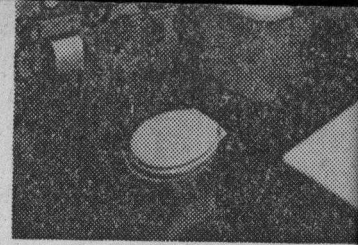
It was moved to its present location, 114 Escalona Drive, in 1885, so the daughter of Perry could build a Queen Anne residence on the old lot on Mission. She was Mrs. Mary Jordan Fagen. Escalona was originally named Davis Street, to honor Isaac Davis, pioneer lime manufacturer of Davis and Jordan, Santa Cruz County.

Perry, a carpenter from Massachusetts, came to California in the 1850s, according to the present owners of the house, Mr. and Mrs. Pete Steen, who have done considerable research on its history.

When Perry came West he mined for a time, but when his health failed, he settled in Santa Cruz and worked as a carpenter here for many years.

Outstanding features that can be noted from the outside of Perry House are its half-round trim on the vertical siding, the gingerbread trim, long missing, which the Steen's have had copied from the old photo on this page,

—M.K.



We At The

The Redwood Dress Shop

**TAKE PRIDE IN OUR PERSONALIZED SERVICE
TO EACH AND EVERY CUSTOMER**

• Classic & Contemporary Styles • Sizes 8-18

SUMMER CLEARANCE SALE

718 Soquel Ave.

9:30-5

423-9

Shop—

Clothes Cottage

Select Consignment Shop

A Step Above the Ordinary

Hours: 10 to 4:30 Mon.-Sat.

Consignments: 10:30 to 3:00

1427 41st Avenue, Capitola

Behind Value Realty on 41st

475-8339



Consignment Shop

Allison H. C. C.

A SMALL WORLD

It's A Small World