

Goodwill

# Goodwill Expands Plant To Expand Aid To Handicapped



## PUBLIC NOTICE NOTICE OF TRUSTEE'S SALE Loan No. 000-61-17894

WHEREAS, LAVERNE D. SCHNUR and DORIS G. SCHNUR, his wife, heretofore executed and delivered a certain Deed of Trust dated July 24, 1964 to FORMAN ASSOCIATES, INC., a corporation, as Trustee, to secure the payment of a Promissory Note to CITIZENS FEDERAL SAVINGS AND LOAN ASSOCIATION, a corporation, and all other indebtedness agreed by said Deed of Trust to be secured, which said Deed of Trust was recorded August 5, 1964 in the office of the County Recorder of the County of Santa Cruz, State of California, in Book 1635 of Official Records, at Page 640; and

WHEREAS, default having been made in the payment of said Promissory Note, according to its terms, CITIZENS FEDERAL SAVINGS AND LOAN ASSOCIATION, a corporation, as owner and holder of said Promissory Note and beneficiary under said Deed of Trust, on May 23, 1967 filed for record a Notice of Default under said Deed of Trust in the office of the County Recorder of the County of Santa Cruz, State of California, which said Notice of Default was recorded in said office in Book 1820 of Official Records, at Page 25; and

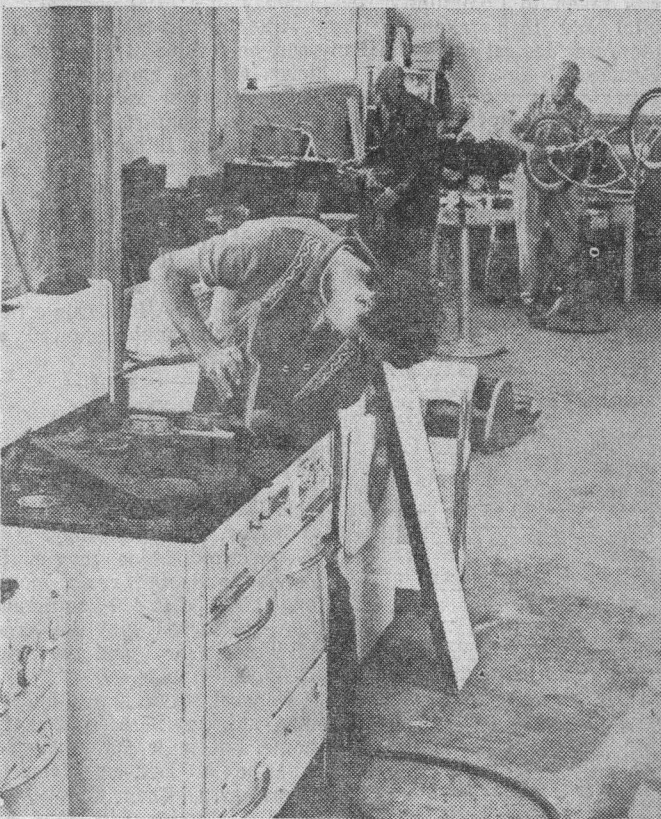
WHEREAS, the undersigned, CITIZENS AUXILIARY CORPORATION, a corporation, now is, and at all times subsequent to September 5, 1967 has been, the substituted Trustee under said Deed of Trust; and

WHEREAS, more than three months have elapsed since the recording of said Notice of Default, and said CITIZENS FEDERAL SAVINGS AND LOAN ASSOCIATION has demanded that the undersigned, as Trustee, sell the property described in said Deed of Trust pursuant to the terms thereof and the provisions of law;

WHEREFORE, NOTICE IS HEREBY GIVEN pursuant to said demand, the terms of said Deed of Trust, and the provisions of law that the undersigned, as Trustee thereunder, will sell, without warranty, on the 25th day of October 1967 at 10:00 o'clock A.M. at the entrance to the County Courthouse Annex, 725 Front Street, City of Santa Cruz, County of Santa Cruz, State of California, at public auction, to the highest bidder, as an entirety, all of the property described in said Deed of Trust, situate in the County of Santa Cruz, State of California, described as follows:

LOT 23, as shown on the map

Carrie Wiseman works before a huge pile of donations by citizens in the receiving department. This cast-off material of every description will be sorted and sent to various departments to be repaired for resale at the outlet stores, thus supporting some 135 severely handicapped persons.



## PUBLIC NOTICE NOTICE TO CREDITORS No. 21417

Superior Court of the State of California for the County of Santa Cruz. Estate of GEORGE DEWEY QUECKBOERNER, Deceased.

Rene Chaperon, left, Lonnie Crawford and Romie Anderson repair appliances and bicycles. These items will find much future use and will help to pay the wages of these men.

Goodwill Industries is a human adventure. In the newly expanded building at 135 Encinal street, severely handicapped persons are working for a living. Paul Woodall is 22, mentally retarded, but doing a man's work for pay. He was referred to Goodwill by the State Department of Vocational Rehabilitation to learn a trade, according to Ernest Damkroger, president of the board of directors. At first he could do nothing. He didn't understand how he could possibly fit into a working situation, but, said Damkroger, once he discovered that he could work with his hands and do many things, his attitude changed and he asked to work with other mentally retarded. This month he was taken off the state sponsored program and is now an employe in the Goodwill transportation department. "There are many Paul Woodalls in Goodwill Industries across the country," said Damkroger. "Last year more than 3500 men and women were placed in outside industry after being trained at Goodwill. It is the largest employer and trainer of handicapped people in the world. In 1966 it helped more than 85,000 people daily in 134 Goodwills." The Goodwill Industries of Santa Cruz, Monterey and San Luis Obispo counties, with headquarters here, trained 27 persons for employment in competitive industry in 1966. The 135 daily employes locally would be on welfare, for the most part, if Goodwill did not exist. "Few people," he said, "are aware of what Goodwill means to a community in terms of saving tax dollars. For example, local Goodwill employes will pay some \$26,979 in Social Security and another \$26,963 in federal income taxes. The total payroll this year will be about \$296,902. These three figures come to \$350,818. Employes receive Blue Cross insurance to the tune of \$8940." But more important are the human statistics. Goodwill helps the handicapped do a day's work, allows them to support themselves and their families. Where does the public come in? The Goodwill's life blood depends on donations of cast off clothing, especially furniture, old books, anything which is beyond use by the home owner. By calling 423-8611 a truck

these stores are used to pay the employes of Goodwill. Damkroger said that expansion of the plant in the Harvey West industrial park area has been steady throughout the years. "While we have increased our floor space more than 17,000 square feet over the original 20,000, we still need office space." A recent addition is being completed at this time. Expansion funds come for the most part from state grants. An application for an \$81,420 grant has been recently submitted to the State Department of Vocational Rehabilitation for use in added space, in the cafeteria and kitchen and office. "When our expansion program is completed we shall have borrowed more than \$100,000," he said. Members of the board are: Damkroger, president; Leonard C. Rausch, vice president; Walter Dutro, treasurer; Larry Dominguez, executive director; Adm. R. E. Ward, public relations; Ray Ansell, Verne Austin, C. W. Bruce, C. J. Fitzsimmons, Mrs. Ethyl Gardner, Kenneth Marion, Darrow Palmer, Al Thorp, G. E. Wahlberg, Kenneth Wenzel, Ned Carter, and Richard Pease. Leonard H. Smith, is director of personnel and public relations. Duane Adamson is director of rehabilitation services. There are Goodwill stores using material from this plant in Watsonville, Seaside, Salinas, San Luis Obispo, and in Santa Cruz at 204 Union street.



Sly Floor and Willis Schmidt build new offices in the expansion program at 350 Encinal street. As the space expands so does the number of handicapped employes.

But the success of the program depends upon the material donated by citizens to be repaired for resale. Call 423-8611 and a truck will come to your door to pick up your donation.







Frank Thomas, left, Richard Parsens and Ronald Farnswortz work in the Goodwill furniture department. There is a special need for donated furniture.



Goodwill workers receive full meals at the plant for 50 cents. They enjoy coffee break snacks as in a regular industrial plant. The cafeteria is marked for expansion.



Mary Balegal, left, and Lucille Norton work in the Goodwill woman's department. Hundreds of dresses and coats and sweaters are cleaned and pressed and repaired for resale.