

# Antiques Show and Victorians In Spotlight This Weekend

Part of the 29th annual YWCA Antiques show-sale which runs Friday through Sunday at civic auditorium, is the Victorian Homes tour.

This event, to be from 1 to 4 p.m. Saturday, will feature four homes including the Gharkey House, 135 Gharkey Street, the Alzina House, 109 Sylvar Street; the Deming House, 417 Cliff Street, and The Breakers, 320 Santa Cruz Street.

The \$3.50 donation for the antiques show includes the homes tour with tickets available at civic auditorium or at each home. The show-sale hours are noon to 9 p.m. Friday and Saturday and noon to 6 on Sunday.

The Gharkey House was built for David Gharkey, pioneer Santa Cruz businessman, in 1885.

David Gharkey came to Santa Cruz in 1857 and built one of the earliest of Santa Cruz' wharves. In 1875 when the narrow gauge Santa Cruz-Felton railroad began operations, the Gharkey wharf became the railroad wharf. Rails extended out to its end, and flat cars loaded with lumber made the trip directly from San Lorenzo Valley mills to the waiting ships. The wharf which was very close to the present wharf, was razed in 1922.

Designed in the Eastlake style, the house has interesting, complex roof angles accented with fleur-de-lis gable ornaments.

The porch is trimmed with typical Eastlake spindles and balusters, and is exceptionally spacious. (The house was moved to Gharkey Street from West Cliff Drive about 60 years ago and Michaelangelo Rosato and Kathy Beiers, the present owners, believe that the size and orientation of the porch indicates that it was designed for the original location with an ocean view and sunny exposure.)

Michaelangelo and Kathy and their children acquired the home in 1967 and it reflects the family's active enjoyment and continuing restoration efforts over the years. Most of the rooms had been modernized to some extent by previous owners; some of them

have since been fully restored and a couple still haven't been tackled.

Michaelangelo has done much of the restoration work himself, acquiring both expertise and a shop full of tools over the years. Projects have included wood paneling in the study, newel posts for the front steps, molding for kitchen doors and windows.

Piece de resistance, however, is the picket fence that surrounds two sides of the house. Patterned after the original Victorian fence at 250 Ocean View Avenue, it is so authentic it even fools the experts.

Kathy and Michaelangelo also have restored some of the original openness by enlarging doorways and have added French doors and a stained glass transom off the living room.

Only the simple light fixture upstairs is original. According to Michaelangelo, all of the others were made by his uncle who started his own reproduction light fixture company some years ago in a successful mid-life career switch from the insurance business.

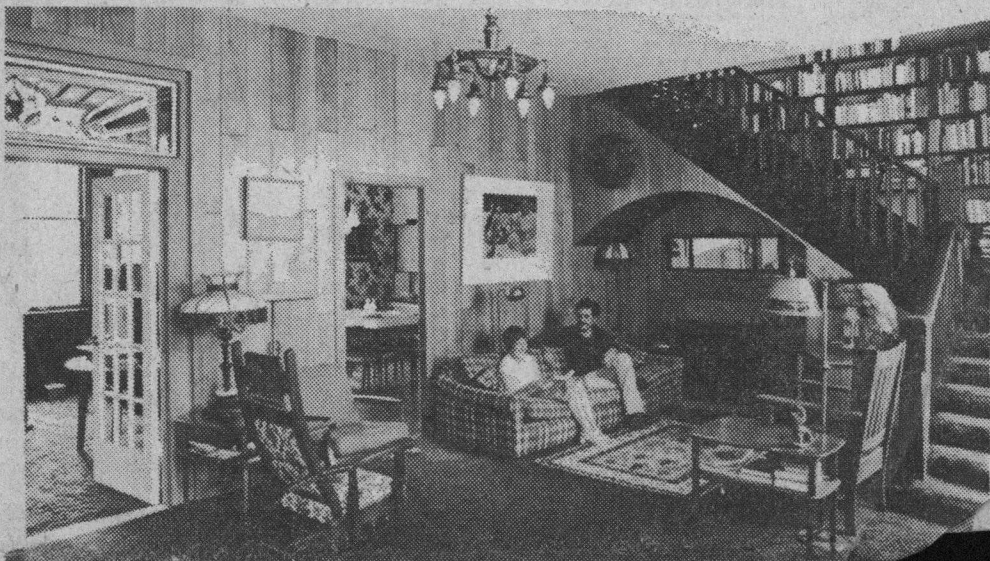
The present family room (someday to be the parlor) has the original ceiling painting as well as one of three of the original fireplaces. Also of interest are the paneling and railing of the stairway with the original painted graining ("the biggest slab of solid burl in town").

Furnishings enhance the old Victorian. The rolltop desk, chair and wastebasket in the study belonged to Kathy's father and were used in his office for the 55 years he practiced dentistry in North Dakota. Spool beds (originally drilled for rope webbing) are used in the girls' room, and the bedroom set in the master bedroom also is an antique. Discovered in a dark corner of a second hand furniture shop, it was made in 1850 in England especially for an exhibition and subsequently was shipped to Carmel.

Smaller furnishings throughout the house include a blend of folk folk and modern art, Victorian curiosities and personal mementos of trips, community involvement and family.



The Gharkey House, left, to be on the Y tour of Victorians Saturday, has typical Eastlake features such as intricate gables, bay window and turned wood spindles and ornaments. Below, master bedroom has massive bed, made in England around 1850, and later shipped around the horn to Carmel.



Kathy Beiers and Michaelangelo Rosato relax in their living room. French doors and stained glass transom were added to the living room to give a feeling of openness and light.