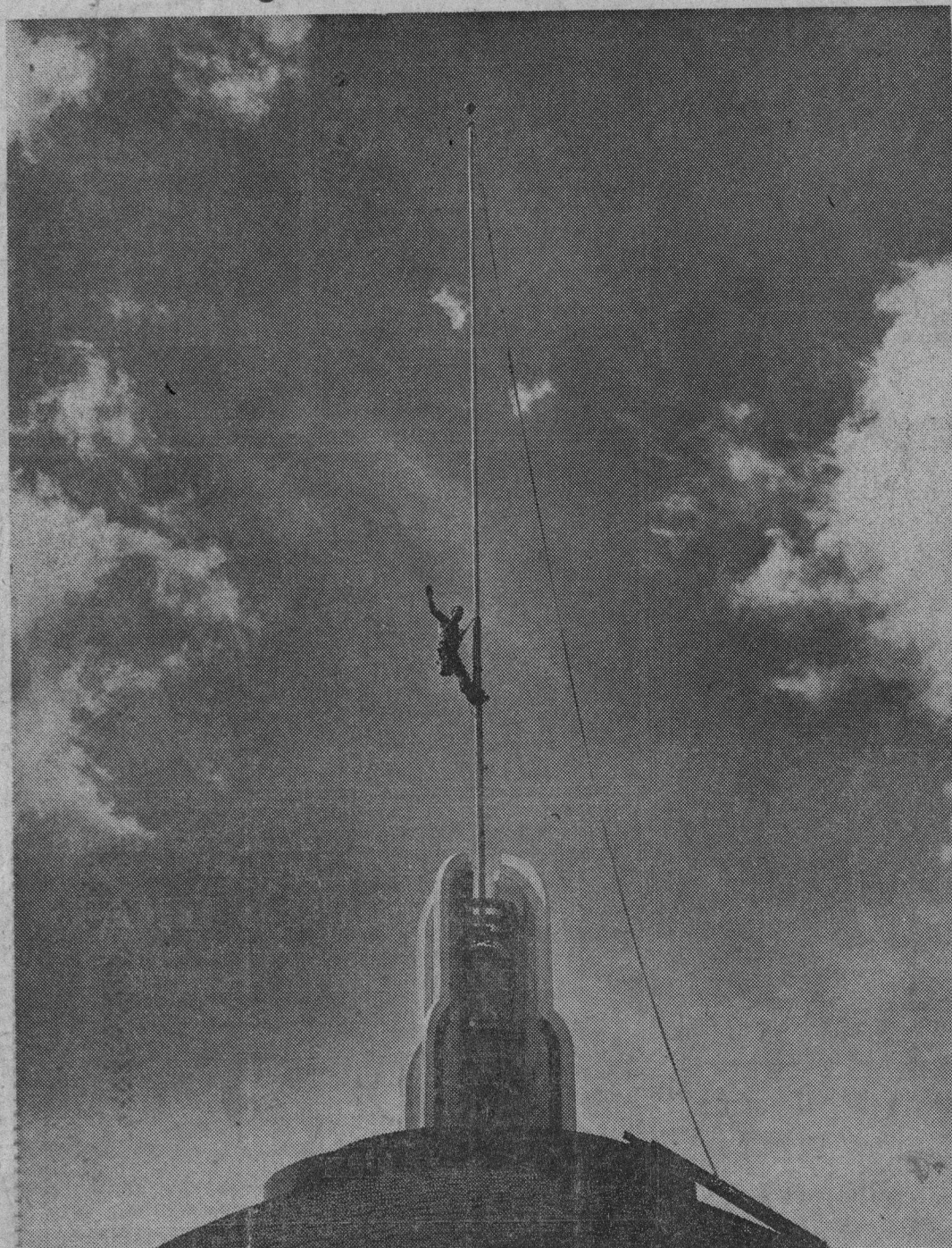


Signs Of A Seashore Season



Atop the Casino on the city's highest flag standard pictured receiving a fresh coat of

paint this week by pole-climber Don Loebel. The 100-foot steel shaft was erected in 1943 by

the late James R. Williamson, president of the Seaside company, to salute the advent of the U.S. Naval Convalescent hospital to the local shoreline. On special occasions during war years the pole flew a 30-foot flag.

Registration Deadline Sunday For Mental Health Institute