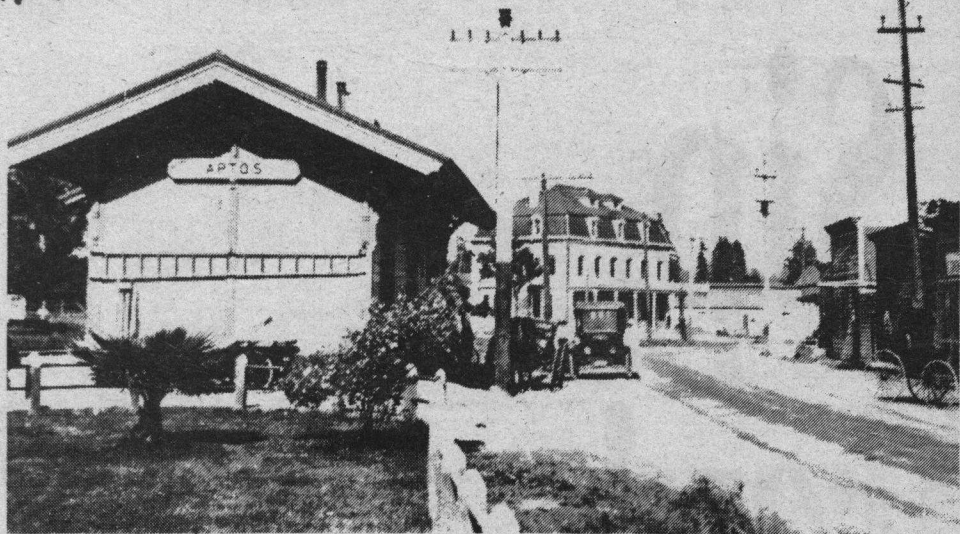


APTOS - TO 1979



*Aptos Village in the early 1900's*

In the 1870's, Arano built the Bayview Hotel on the corner of Trout Gulch Road and moved his store there, contributing to the growth of the small village, which was supported by cattle, apple and lumber exports.

All that's left of this high-class playground is a grove of trees and a street sign at the intersection of Spreckles Drive and Treasure Island.

Spreckles's brother-in-law, Claus Mangles, built a copy of Spreckles's house in the 1880's along Aptos Creek, close to the huge redwood of Nisene Marks State Park. It is now a bed-and-breakfast inn.

Spreckles died in 1906. His sons gradually sold off the properties. In 1927, developers acquired 3,000 acres of what is now Rio del Mar. With the construction of a golf course in the '30's, Rio del Mar became a favorite recreation spot

for San Francisco Peninsula families.

Another landmark, Redwood Village, situated where Soquel Drive meets Hwy. 1 near Rio del Mar, was originally a hotel. It was built in 1928 with wood hewed from trees on the property. It is now an eclectic cluster of boutiques, eateries and shops.

Today, Aptos is a tree-and-sea mecca visually dominated by towering redwood forests that poke fingers of trees and bushes down to more than 23 miles of mostly pristine beaches.

Aptos is home to Cabrillo College and its world-recognized Music Festival, and is headquarters for the Santa Cruz County Seascape Swim and Racquet Club, home of the California Open Tennis Tournament, while Seacliff Beach is famous for fishing derbies for young and old.