

Cruz Sentinel

Serving Santa Cruz County for More Than 100 Years

SANTA CRUZ, CALIFORNIA, MONDAY, JANUARY 27, 1958

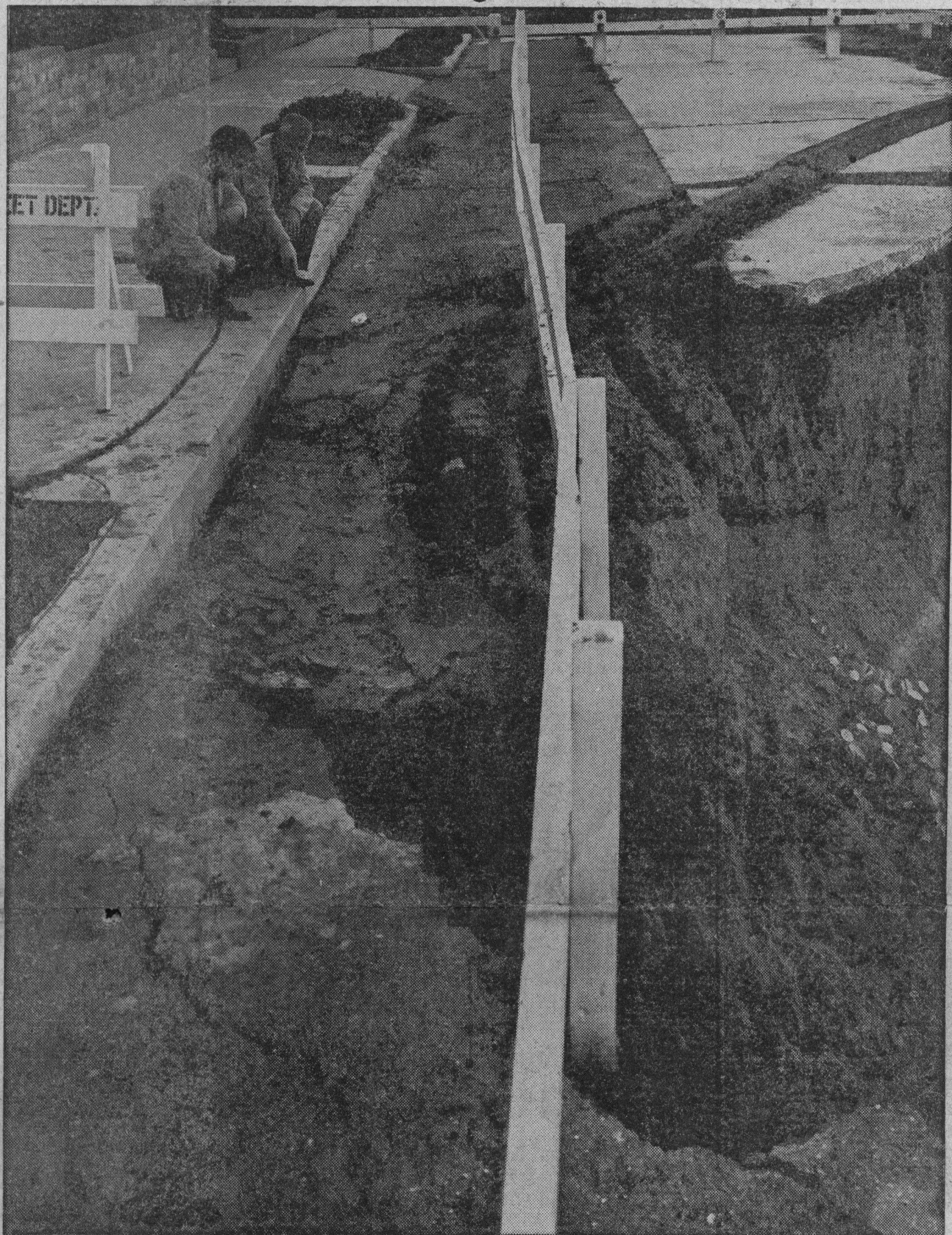


5c

Sunday and Daily
Excepting Saturday

Key Exchange Prog

More Erosion Damage At East Cliff Drive



Street department officials examine cracks along the face of East Cliff drive where several tons of dirt and street slab will topple "imminently." Sunday morning about five feet of

the cliff face broke loose and fell to the beach below following the windlashed rain storm Saturday night. Erosion is eating its way to the front yard

of the La Solana apartments at 1703 East Cliff drive. Pictured above are Street Department Superintendent Don Bruce (right) and Asst. Supt. Loren Scofield.