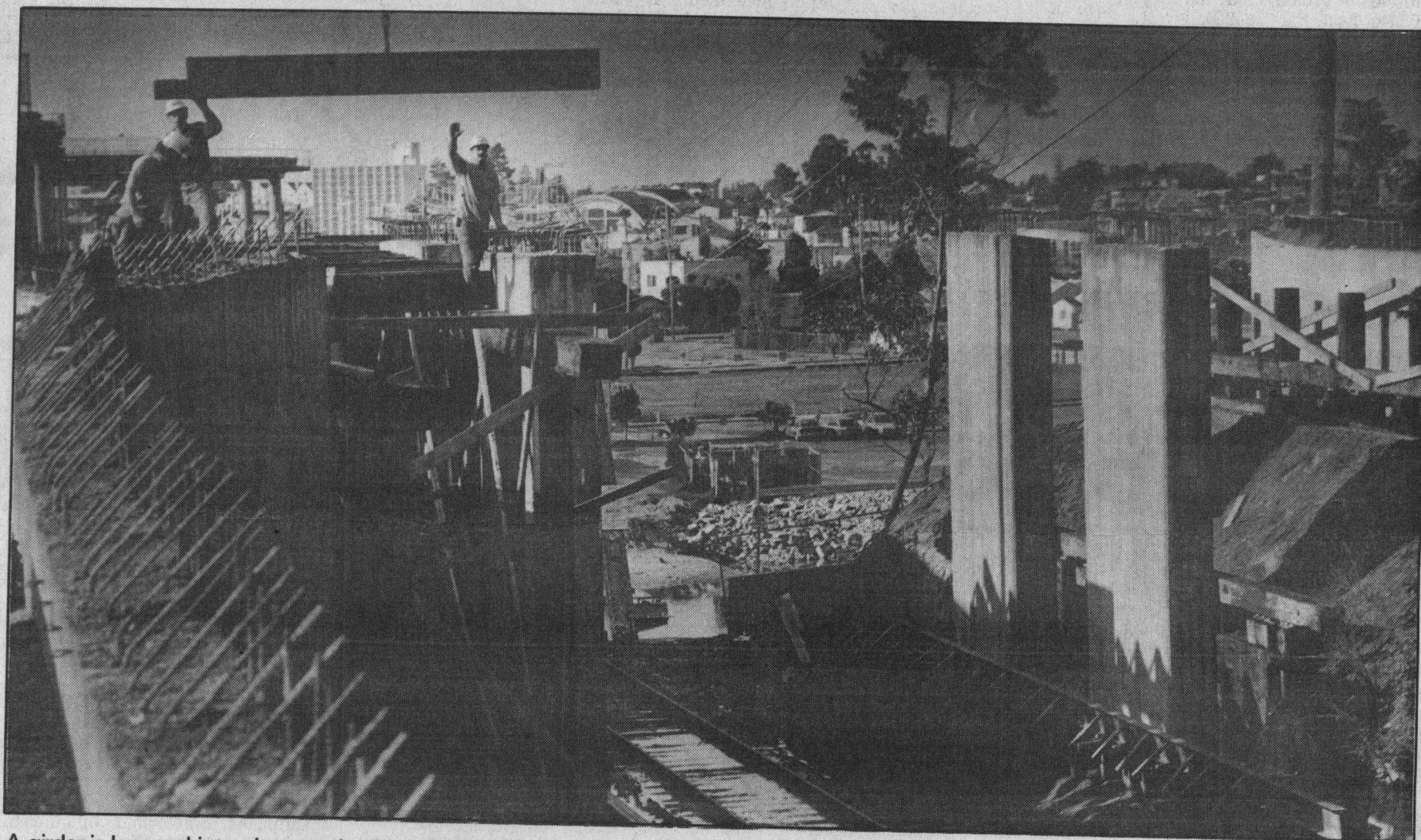


A bridge for the '90s

BRIDGES



A girder is lowered into place on the East Cliff Drive-Murray Street bridge. Supports for the bridge are already in place.

1-31-90 East Cliff bridge is on schedule

SANTA CRUZ — It may not look like it, but the project to replace the old Southern Pacific Railroad trestle built during the 1920s with a bridge of the 1990s at East Cliff Drive is moving ahead right on schedule.

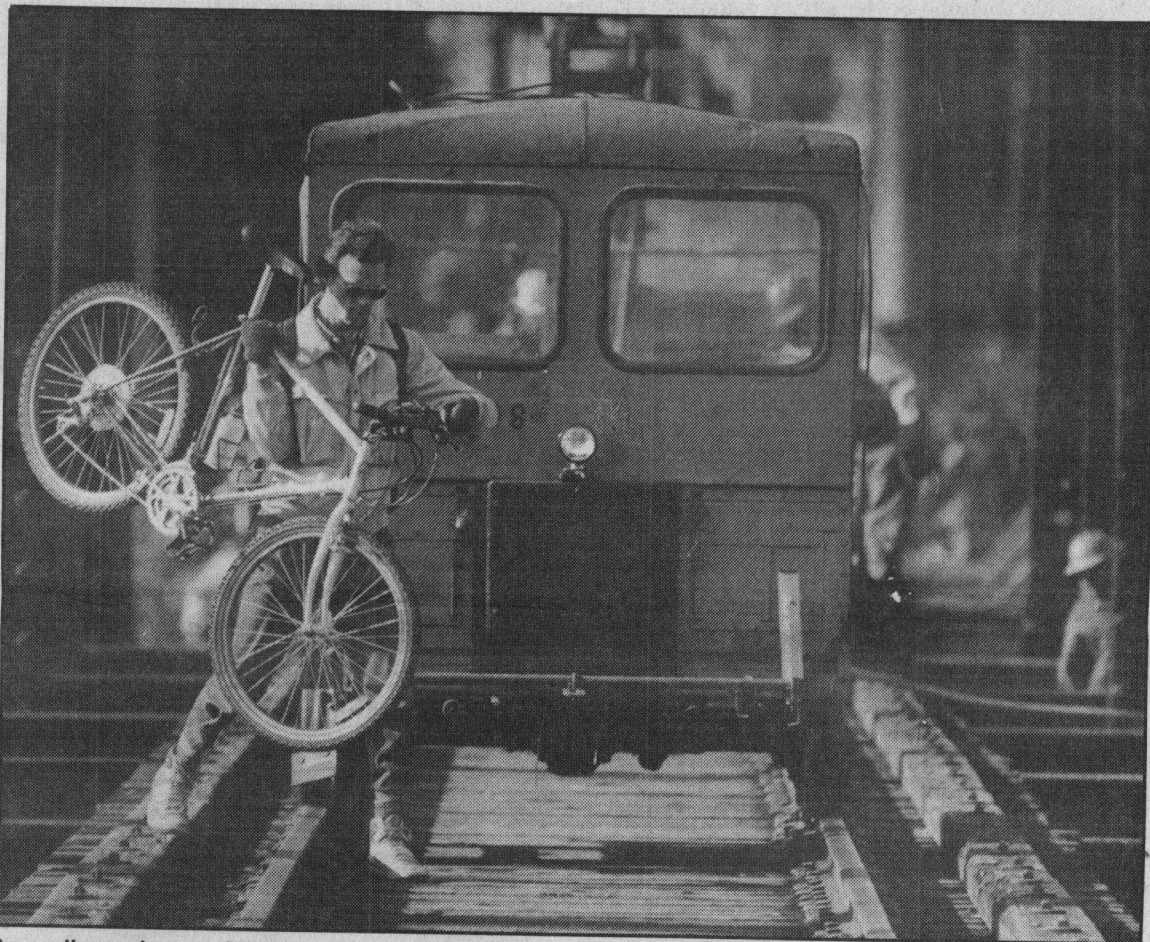
James Feeney, Santa Cruz's assistant director of public works, said the \$1.4 million project, which was started in August last year, should be completed by mid-April.

The work is being done by crews from Granite Construction, under the auspices of the city of Santa Cruz, and Harris and Associates of Concord.

Feeney said the Oct. 17 earthquake caused no damage or delays at the construction site.

Eighty percent of the funding for the project is coming from the Federal Bridge Repair Project, according to Feeney, who added the remaining 20 percent is being divided between the city and Southern Pacific Transportation Co.

Photos by Bill Lovejoy/Sentinel



A cyclist, who preferred to remain anonymous, hop-scotched around work on the trestle.