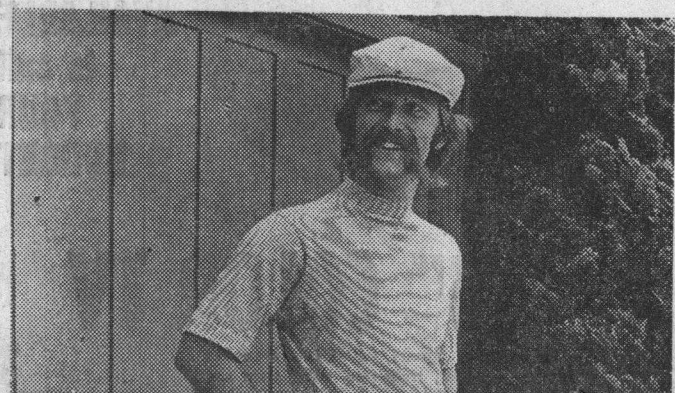


Bicentennial Events Tomorrow, Sunday



HAND GROUND COFFEE anyone? This antique will be on sale at the Portola Bicentennial Fiesta tomorrow from 2-5 p.m. at the Santa Cruz Civic Auditorium. Admiring it above are Mrs. Hal Watts, left, and Mrs. Robert Rittenhouse in charge of SCOPE's flea market table. Proceeds go to Pacific Avenue Hall beautification. Baseball pants of yesteryear below, dating from old Santa Cruz baseball days, will be among items offered at Fiesta. They are modeled by Jeff Watts, senior at UCSC.



Don Gaspar de Portola on horseback, accompanied by his band of soldiers, priests and Indians, will open Bicentennial events tomorrow in Santa Cruz at County Governmental Center.

Dedication of a bronze plaque on a 16-ton boulder is slated for 1 p.m. with Assemblyman Frank Murphy Jr. as speaker. The plaque commemorates the Portola Party's discovery and naming of the San Lorenzo River, October 17, 1769.

The dedication ceremony will include Santa Cruz County Symphony playing original California Indian music under the direction of Norman Masonson.

Following the dedication, a stagecoach will carry dignitaries to Santa Cruz Civic Auditorium at 2 p.m. Stagecoach passengers will include County Supervisor Dan Forbus who will serve as emcee for the fiesta kick-off at the auditorium.

A variety of events are planned for the fiesta, including American Indian dancers, sidewalk art, flea market, strolling Spanish musicians, a wine tasting, a Victorian Homes tour, puppet shows, historical and educational slide shows, parochial school displays. Food and refreshments also will be served during the afternoon.

At 9 p.m. the Bicentennial Ball gets underway at Coconut Grove with many

Fiesta Location Changed

The Portola Bicentennial Fiesta, originally scheduled to take place tomorrow at Upper (Holy Cross) Plaza, will be held at Santa Cruz Civic Auditorium instead. It opens tomorrow at 2 p.m. and runs to 5 with food and entertainment for all ages.

All persons taking part in it are asked to set up at the auditorium by noon.

Only fiesta event still scheduled at Upper (Holy Cross) Plaza is the Victorian Homes Tour from 2-5 p.m. Homes include: Mrs. Geraldine Work, 127 Green Street; Mrs. Ed-



CASAS de VICTORIANO — Victorian Homes will be conducted tomorrow from 2-5 p.m., a walking tour around Upper (Holy Cross) Plaza. Mrs. Donald Sachtjen, right, chairman, inspects initials etched into the window pane of home of Mrs. Geraldine Work, 127 Green Street, one of the tour homes.



6 Santa Cruz Sentinel

Friday, October 17, 1969

Portola Slide Show For Bicentennial

Eric Edge, teacher at Mission Hill Junior High, will

AMAR A DIOS

EDITOR'S NOTE: Local poet Jane Rankin won first prize in the California Bicentennial category of the 1969 state contest of Chaparral Poets for her poem, AMAR A DIOS, which is reprinted for Sentinel readers.

*The age belongs to Serra.
Frail, but iron-willed
he gave no thought to misadventure
carrying the banner of the Cross
to Alta California.*

*With deep concern he wooed reluctant natives,
gave them trinkets, learned to speak their
language.
Fearless, patient, he taught them games
and handicraft;
explained the meaning of the Mass.*

*The seasons pressed in drought and rain
as stubbornly his sandals paced the miles—
How much there was to find, to feel, to hold!*

*He nursed a longing for the chime of bells,
the song of wind in olive trees, soft splash of
fountains—
sounds loved in gardens of his youth.
Fervent, eager, he lived on the edge of
tomorrow—
his kindly greeting always, "Amar a' Dios!"*

*From the amber hills he loved,
a land of live oak and madrone, of quiet
streams—
the earth breathes out its past . . .
A fragile gray-robed figure
drifts across time—
immortal, unseen, untouchable— Serra.*

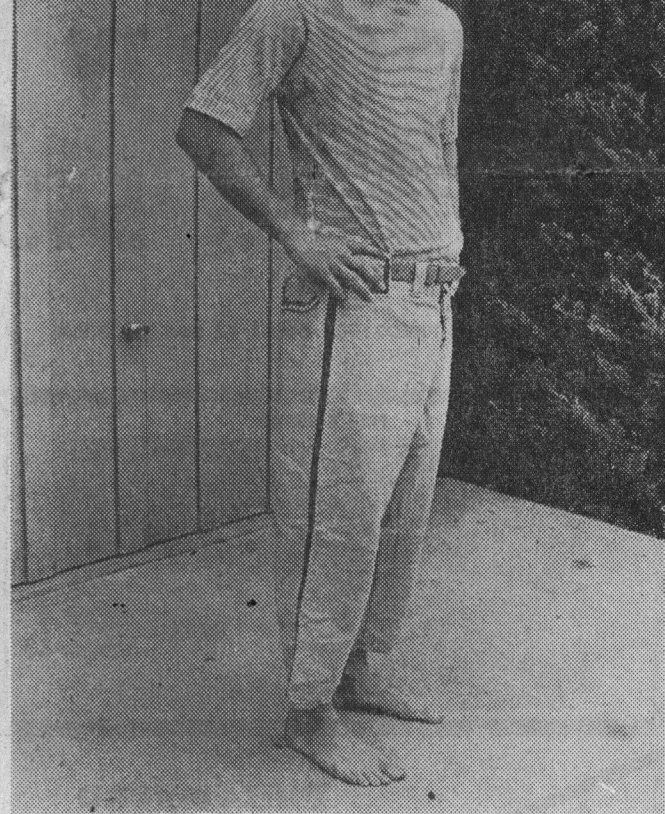
OES

Golden
a bake
bazaar

Mo
Mir
In A

SALIS
(AP) —
was born
can par
remote
stances,
will of C

Twelve
regular
areas, p
ficer Dr
and Sis
the Roya



... Santa Cruz event still scheduled at Upper (Holy Cross) Plaza is the Victorian Homes Tour from 2-5 p.m. Homes include: Mrs. Geraldine Work, 127 Green Street; Mrs. Edward Tannehm, 123 Green Street; Gingerbread House, 218 Mission Street; Mrs. Gwendolyn Niemeyer, 105 Sylvar Street, and Santa Cruz Mission. The public is invited.

gall-goers planning to wear costumes of the Spanish or Mexican periods. The Marrieds are Sponsoring the ball.

On Sunday there will be the big Portola Bicentennial Parade at 11 a.m. in downtown Santa Cruz.

Other Sunday events are the Concours 'd Elegance antique and 1970-auto show at San Lorenzo Park adjoining the County Governmental Center from 10 a.m. to 5 p.m. Food will be served.

At 2 p.m. an art auction and wine tasting are slated at Prolo Chevrolet, Pacific Avenue and Sycamore Street, downtown Santa Cruz. An art show and poetry reading in Scotts Valley are set for both Saturday and Sunday from 2-4 p.m. at Vista del Lago Clubhouse.

Santa Cruz Art League Gallery will open from 2-5 Sunday with and exhibit of paintings and drawings of old Santa Cruz homes and a tea. The public is invited to all events.

For Bicentennial

Eric Edge, teacher at Mission Hill Junior High, will run slide shows tomorrow at the Portola Bicentennial Fiesta, depicting the actual route of Portola.

Shows will start at 2 p.m. at Santa Cruz Civic Auditorium.

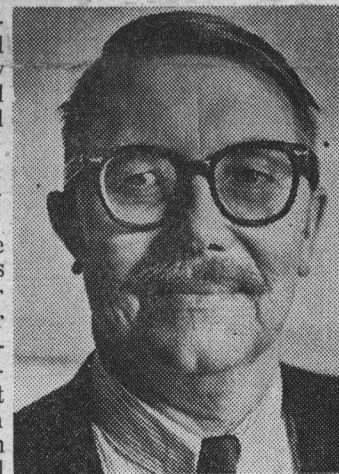
The color slides include both ground and aerial views of the route of Don Garpar de Portola, Spanish explorer who led the first land expedition through Alta California. The Portola Party, as it is referred to, came from San Diego Harbor, up through what today are the coastal counties, looking for Monterey Bay.

Important to Santa Cruz County was their discovery of the redwood tree near Pinto Lake and the discovery and naming of the Pajaro and San Lorenzo Rivers.

Eric Edge, who has lived in California since 1923, is a native of England. He majored in education at San Jose State College and University of Auburn, Alabama.

He has spent several summers doing research on California's "facts or fables," and he credits Warren (Skip) Littlefield with sparking his interest in local county history.

Edge has taught since 1948, is married and the father of two sons, one at Santa Cruz High and one at Bay View. In addition to teaching duties he is interested in conservation, and belongs to SCRZ Angling and Hunting Club, Associated Sportsmen of California, Trout Unlimited and California Wildlife Federation.



ERIC EDGE

CONSULT

these members

**INSURANCE AGENTS
ASSOCIATION OF
SANTA CRUZ**



Neuwald-Berryessa
Cor. Locust-Cedar 423-4304

NITTLER & NITTLER
151 Walnut Ave. 423-6800

Andersen & Andersen
111 Cooper St. 423-8542

ELLIS F. AVER
627 Center St. 426-8752

JOHN BATTISTINI
120 Locust St. 423-6360

BEDELL & NELSON
206 River St. 426-3707

C. E. Canfield & Son
1411 Pacific Ave. 423-1822

FINN & FINN
1526 Pacific Ave. 423-3466

M. C. HALL & SONS

FROM YOUR WATCH REPAIR SPECIALIST

**WE SPECIALIZE
IN FINE WATCH
AND JEWELRY REPAIR**

● ALSO CUSTOM DESIGNS ●

PENNELL'S *Jewelers*

1359 Pacific Ave.

Phone 423-1318



SO THEY SAY at HAMM'S



After he told her about the superb items for pleasure on display at HAMM's TV & STEREO. To name a few . . . a large selected group of Television, Radios and Stereo are well represented by proven manufacturers such as Zenith, Motorola. Prices vary from low, low charges up to our most beautiful and luxurious models which come in period cabinets and selected hardwoods. You'll find portables, table models, consoles and combinations and easy Bank terms can be arranged to please.

Airport