

'Mystery' Homes On Tour

By MARGARET KOCH
Sentinel Staff Writer

Three families, all longtime friends, decided to build their homes on a wooded hill in mid-Santa Cruz County, all within a half mile of each other.

The hill estates are at different levels with an Italian Villa-type home at the top, a French Normandy farm house below it, and a little further down, another charming French style home.

The three homes will be opened to the public September 20 for the Mystery Homes Tour of Capitola's Episcopal Church of St. John the Baptist.

The tour will be from 1:30 to 4:30 p.m. and also will include two other homes of interest: a small Victorian on 20th Avenue and the former Capitola Railroad Depot where refreshments and music will be provided for tour-goers.

Tour tickets at \$10 general, and \$7.50 for seniors, are available at the State Farm Insurance office of Kirk Gardner, 831 Bay Avenue, Capitola, weekdays; at the church office, 216 Oakland Avenue, Capitola, and at Calvary Episcopal Church in Santa Cruz, corner of Center and Lincoln Streets.

Proceeds from the tour will be applied to the cost of a pipe organ now being constructed by Schoenstein and Company of San Francisco, which will be installed in the historic church at Capitola.

The high ridge on which the mystery homes are located, commands wide views of Monterey

Bay and, in the other direction, of the Santa Cruz Mountains.

The Italian style villa has a Roman design pool on the terrace, with a lion's head set into a trellised wall at one end, a large guest house at the other. The terrace itself looks out over wooded acreage to the mountains.

Inside the house are towering ceilings, the most interesting of which is the barrel-curved ceiling of the living room. The elegant dining room has a recessed ceiling handpainted with birds and flowers and framed with a trompe l'oeil molding.

Colors are muted, with putty for the walls, bookcases and tall shutters of the living room and soft ochre for the plastered exterior walls.

At the mid-level on the ridge, the French farm house is approached through a plastered wall and past the swimming pool on a tri-level terrace. Massive dark beams are set into the garden wall, and inside, into the ceilings of the entry hall, living and dining rooms. The beams were brought from snowsheds near Truckee.

Over-size handcrafted tiles were laid for the floors and special tiles made in Europe line the kitchen and pantry walls.

Owners of this house chose this particular style of architecture because of their many pleasant memories of visiting in France.

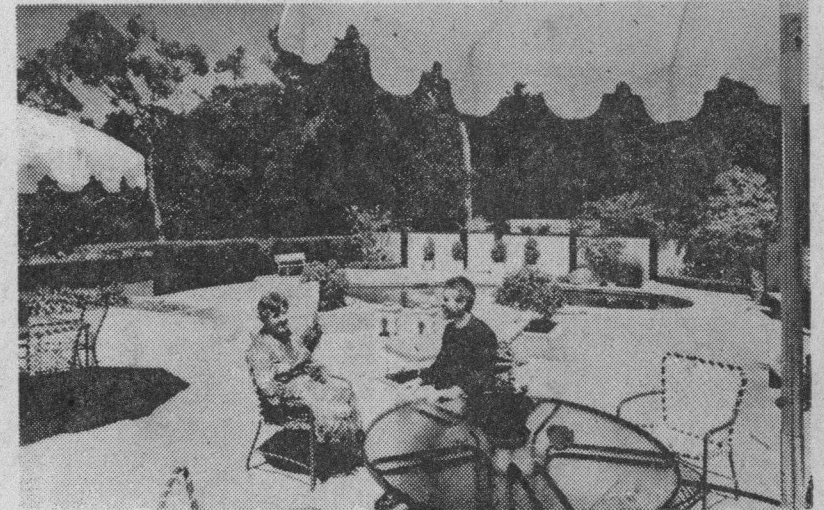
Both homes are furnished with fine antiques and the Italian villa has rugs of museum quality on its floors. The third mystery house will be described next Sunday.



The terrace of the Italian Villa-style home with pool and two bedroom guest house looking toward the mountains. Main house is at left.



Dining room of the French farm house has massive beams brought from railroad snowsheds near Donner Pass. Right, above: Helen Bergthold of the tour committee and the Rev. Lawrence Mikkelsen, Capitola church pastor, on the terrace. Below, Chris Cottle, Col. Al Wilder and Carol Black of the committee visit in the living room which also features the magnificent beams. Master bedroom colors were repeated in two paintings by artist friend of the owners in a switch-plan; usually room colors are taken from a painting instead of vice versa.



You're
Invited
To A Tour

CEDAR MEDICAL CLINIC
is proud to announce
the association with
DEAN S. KASHINO, M.D.
FAMILY PRACTICE
and
OBSTETRICS

How Much
Is Your Child
Overweight?





Unusual barrel ceiling in living room of Italian-type home in which Cottle and Helen are chatting. Carol stands in the formal dining room at right, which has specially painted ceiling.



BIKINIS

(WITH THIS AD)

**TRADE IN YOUR OLD BIKINI
FOR A \$5.00 CREDIT AGAINST
YOUR PURCHASE OF ANY NEW
REGULAR PRICED BIKINI**



**Motor Development &
Pre-Gymnastics Classes
for Children 6 months to**