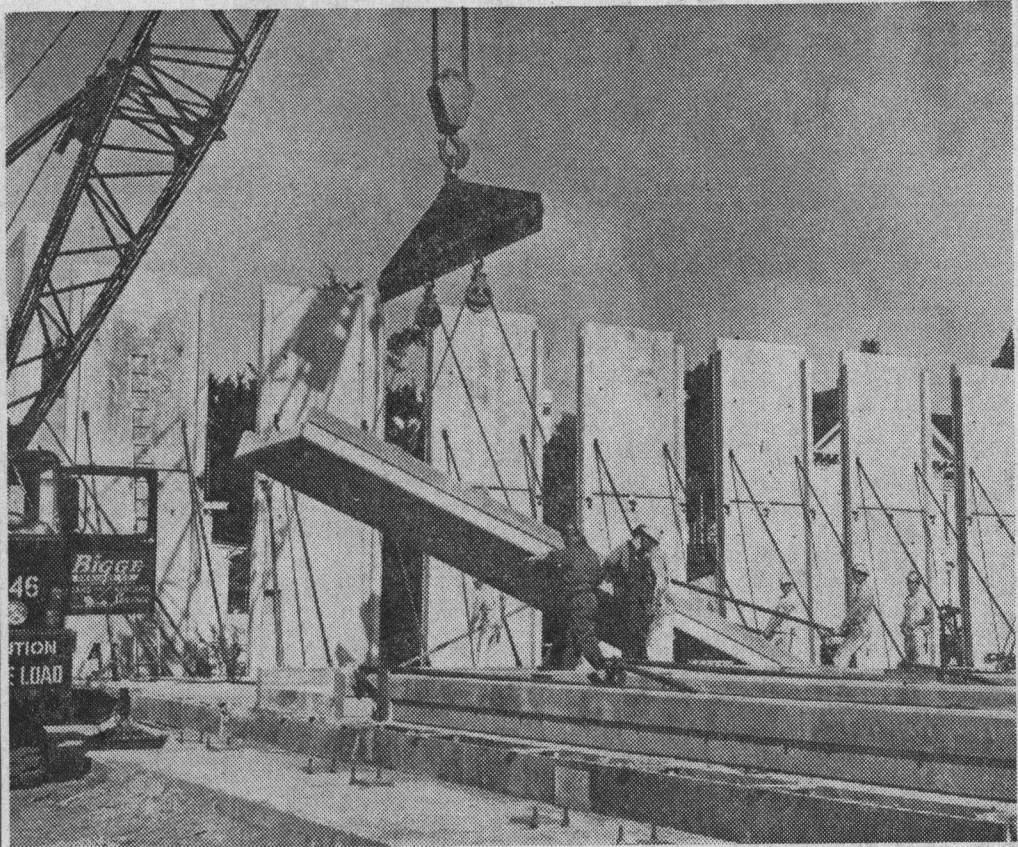


5/2/67

City Hall Addition Takes Shape



A mammoth crane today is lifting the 15-ton pre-cast wall sections of the city hall addition into place. The \$400,000

two-story structure will be completed before the beginning of next year. The bottom floor will house the city water,

finance and data processing sections. On the top floor will be public works, inspection and planning departments.

Ca
Fo

The
trust
tion
tion
board
junior
Dr.
presi
fy F
SB
Walt

T
min
nion
Dep
plac
rate
hav
stal
Dr
terda
has
It is
fessi
tions
Ob
sessi

Ac
Chan
on a
miss

Efficiency

Citizens For School Tax Over