

# Buildings and citizens honored by Historical Trust

**B**LUE AND WHITE landmark plaques will grace eight historical buildings throughout the county, it was announced this week at the Historical Trust awards dinner at the recently restored Palomar Hotel, one of the plaque recipients.

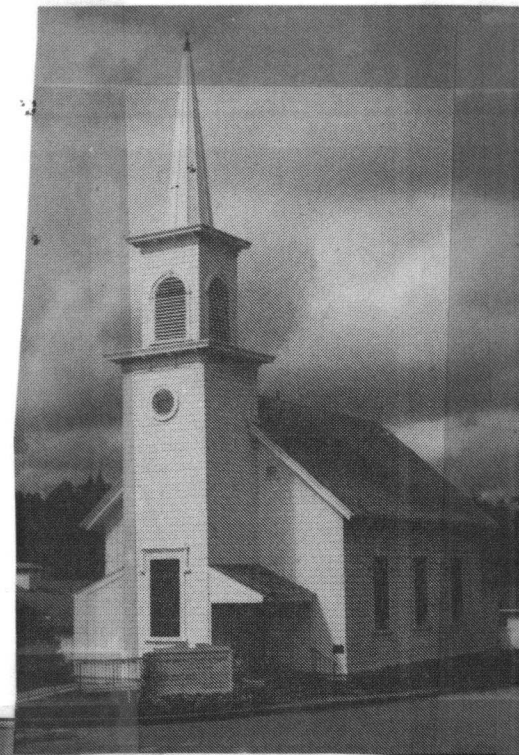
Certificates of commendation also were awarded to those who've contributed over the long term to awareness of local heritage. Certificates of recognition were given for outstanding preservation of historic structures.

The following buildings were given landmark plaques: Hexagon House, 130 Sycamore St.; Epworth by the Sea, 320 W. Cliff Drive; Congregational Church of Soquel, Soquel Drive and Center Street, Soquel; classic beach cottage, 207 Seabright Ave.; Louden Nelson Center, Center and Laurel streets; First Community Church, Central Avenue and Main Street, Ben Lomond; Hotel Palomar, 1344 Pacific Ave.; and eastlake residence, 135 Gharkey St.

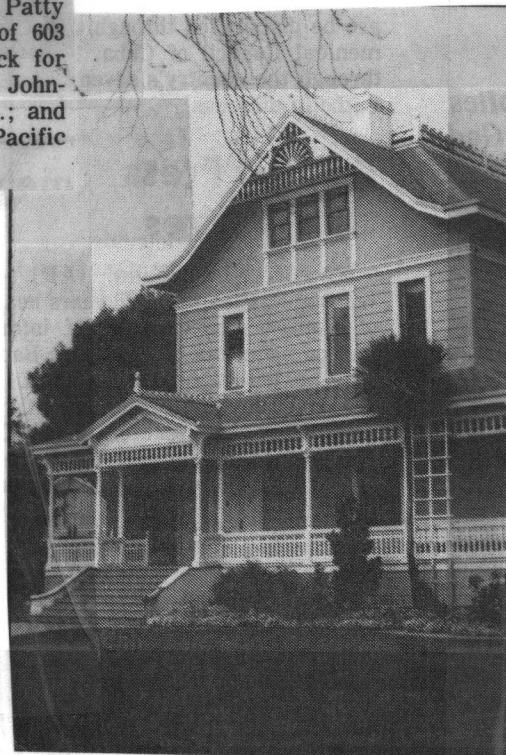
Certificates of commendation went to the following: Shirley Gleason for contributions of the Octagon Museum and Historical Trust; Donald T. Clark for historical research and "Place Names of Santa Cruz County;" Paul Johnston for photo documentation of the county's history and

donation of photographs to the Historical Trust; Chic and Jeannie Gordon for contributions to Wilder Ranch State Park and other local history programs; Fred D. McPherson Jr. for establishing the Santa Cruz Historical Society and for endowing the Historical Trust's publication fund; George Ow Jr. for publication support and museum exhibit on the Chinese; Page Smith for research and publication in American history; and Karen Sinsheimer for contributions to the Historical Trust.

Those receiving certificates of recognition were: Sharon Dowe and George Propper for supporting archaeological research of mission tanning vats; Mr. and Mrs. David Potter for preservation of the Castro adobe in Watsonville; Milt Macken for supporting archaeological investigation at the possible site of the Marina Castrol adobe in Capitola; Cahminade of Santa Cruz for reuse of historical structure; Steven Geiszler for renovation of 240 Gharkey St.; Patty Partch and John Hicks for renovation of 603 Washington St.; Tim and Patrician Black for renovation at 236 Ocean View Ave.; Fred Johnson for renovation at 1205 Seabright Ave.; and Shoon and Sue Lim for renovation at 615 Pacific Ave.



Among the eight historical buildings to receive landmark plaques are, above, the Congregational Church of Soquel; far left, Epworth by the Sea at 320 West Cliff Drive; and near left, Hexagon House, 130 Sycamore St.



REFERENCE

SANTA CRUZ SENTINEL  
April 3, 1987