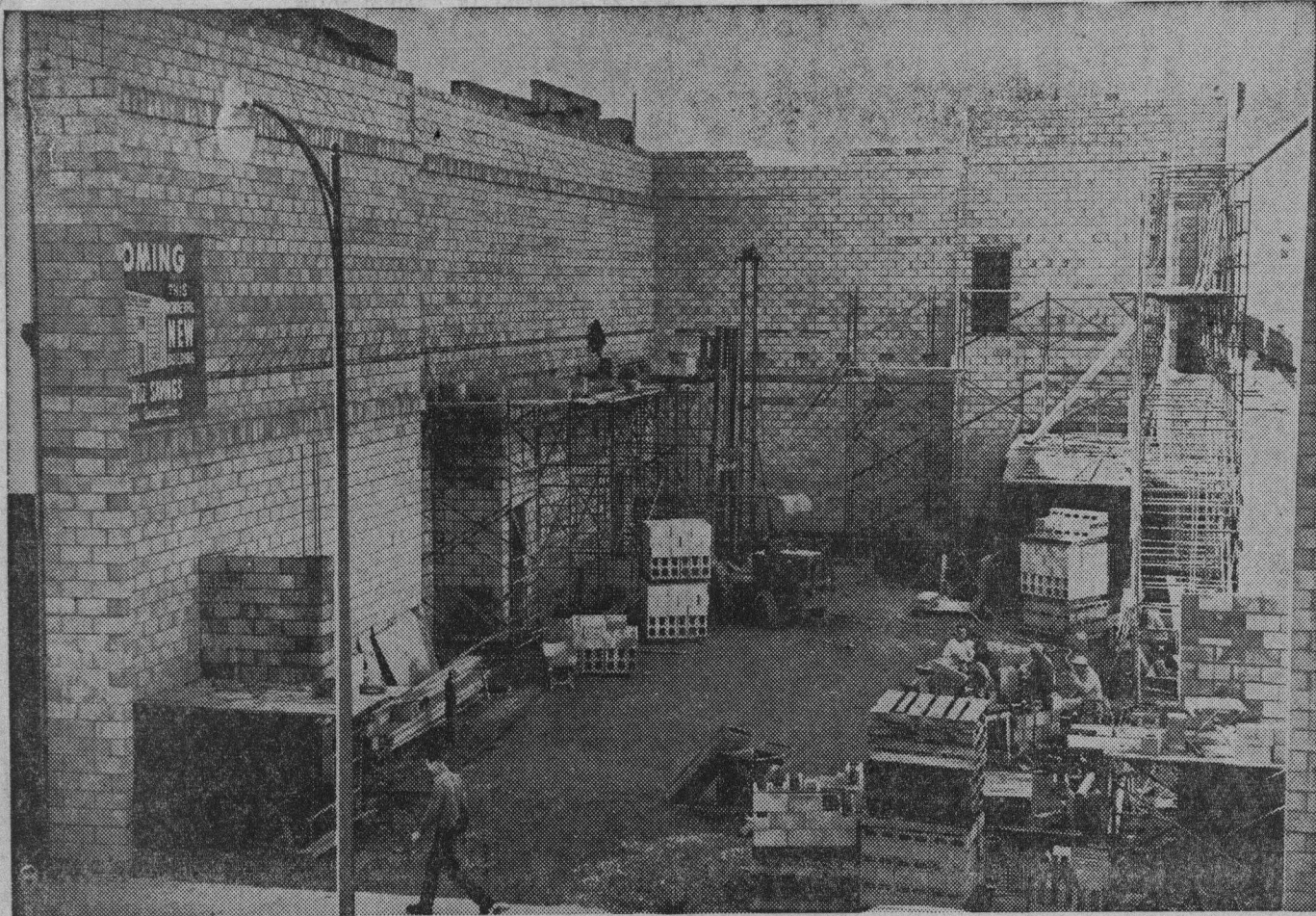


Banks + Banking  
2-1-59

## New Savings And Loan Building Shoots Up



This picture doesn't show the world's biggest and trickiest handball court but the concrete block shell of the new Santa Cruz Savings and Loan associa-

tion building on Pacific avenue. According to an official of the company, the building will be opened some time in May. At present the association's busi-

ness is conducted in the building just out of the picture to the right. The black blob at right center is the covering over the building's new vault

and safety deposit box area. Half of the site formerly was the association's old building and half the former Gosliner Shoe store.