

Capitola Potter Fashions Vessels For Church

Ceramic Ciborium, Chalice To Be Consecrated Today

By Margaret Koch

Ciborium—chalice—knop.

These are unfamiliar words to most average churchgoers.

They are words that today will take on fresh significance at St. John's Episcopal church of Capitola.

Because today at the 11 a.m. service, new vessels for Holy Communion are being consecrated by the Rev. John T. Whiston, rector.

The ciborium is the covered container which holds the wafers, or bread. The chalice is the wine vessel. And the "knop" is a ridge around the chalice stem. It serves the functional purpose of affording a more secure hold on the cup.

The ciborium and chalice were completed this week by Capitola potter Wilbur McCutchan, a member of the church. He is now at work on a smaller duplicate set of vessels to be used during "house church" sessions in private homes. Two groups, one young, the other older, meet weekly in this program.

The idea for the ceramic communion service grew out of the Rev. Mr. Whiston's belief that sometimes the giving of one's talents, time and self are more important than the giving of money.

"In the early days of the Christian church people didn't have much money so they gave of their skills and talents," he explained.

The weaver gave cloth; the carpenter helped build; the mason constructed the foundation and the potter made necessary dishes and containers.

When two special, tall vases were needed for the church a while back, McCutchan offered to make them as a gift. Later he also made a set of matching jardinières for the church altar plants.

Simplicity and utility are combined in the communion vessels which are a warm beige color—a shade secured by using a small amount of manganese carbonate in the glaze.

Six to eight hours of work have gone into each article. They were hand thrown on McCutchan's potter's wheel, dried and fired twice. Getting both pieces of each set to be the same size and shape and estimating their shrinkage were McCutcheon's greatest worries.

"They shrink a bit at every stage of development and the finished product will be approximately one-twelfth smaller than its original size," he explained.

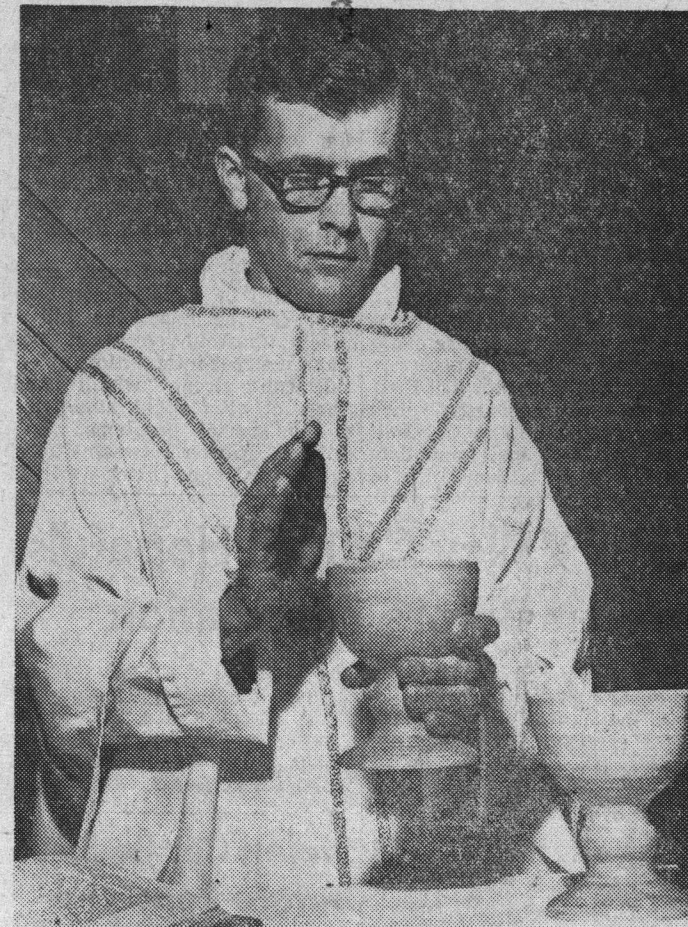
He studied at San Jose State college from 1938-40 with Dr. Herbert Sanders, professor of ceramic art. Since 1946 he has operated his studio and shop at 111 Capitola avenue.

Perhaps the most famous chalice in the world is the Great Chalice of Antioch, found by Arab workmen in 1910 in the ruins of the ancient city of Antioch. It is a plain metal cup set into a silver filagree goblet and is believed by some people to be the Holy Grail—the cup from which Christ drank at the Last Supper.

The Chalice of Antioch is now in the collection of New York City's Metropolitan Museum.

Man's search for the Holy Grail over the centuries has furnished the theme for poetry, literature and a famous opera score.

Toastmasters Run



The new chalice and ciborium are placed on the altar at St. John's Episcopal church of Capitola by the Rev. John T. Whiston, rector. They are to be used for the first time in today's Lenten Communion service at the church.

Deputies Probe Hospital Burglary

Sheriff's deputies are continuing investigation of a burglary of the Veterinary Hospital at 2701 Chanticleer avenue.

Sometime Thursday night or Friday morning the intruders ripped a screen and broke a window to enter the building. Reportedly taken were narcotics valued at approximately \$30, an undetermined number of checks and some \$120 in cash, deputies said.

Fertilizer

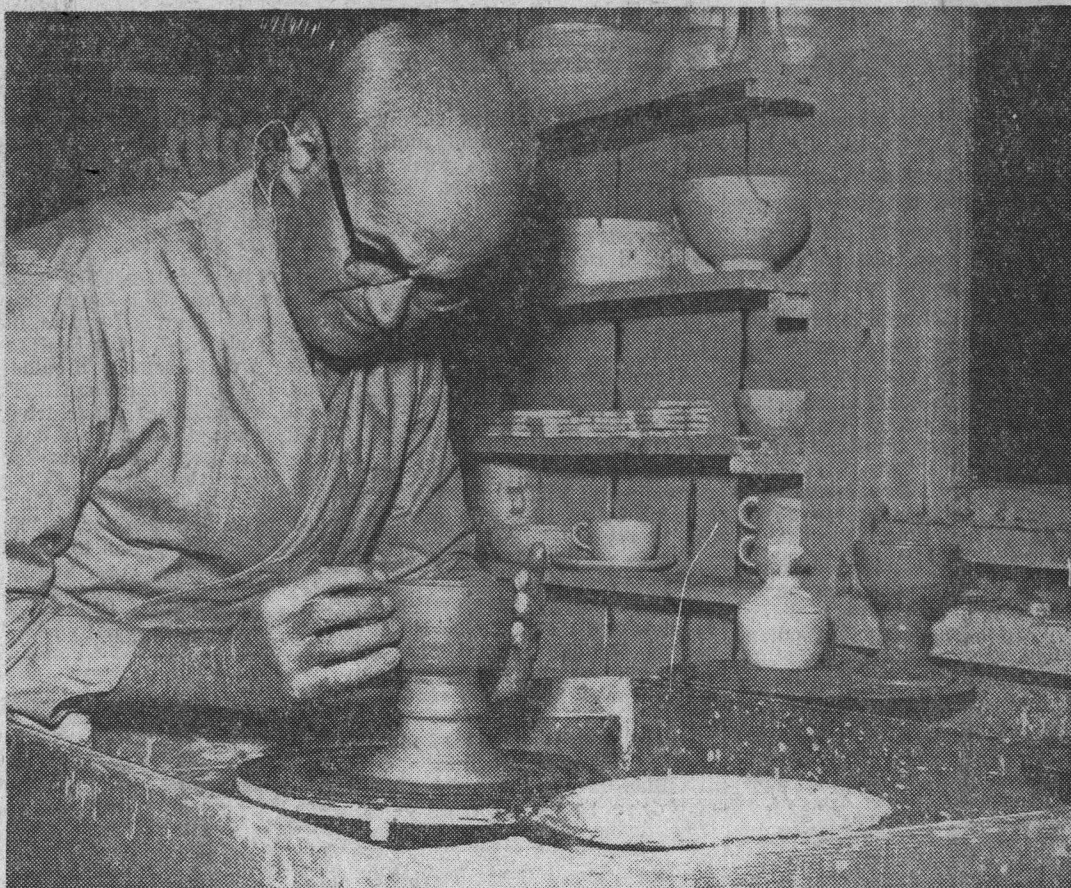
- GOOD CLEAN FEED LOT FERTILIZER
- EXCELLENT FOR LAWNS AND GARDENS
- EXCELLENT FOR NEW LANDSCAPING

Del. per yard

\$3.00

SANTA CRUZ DAIRY FARMS

426-2481 or 475-8060



Wilbur McCutchan, Capitola potter, gives the final shaping to the smaller Communion vessels to be used for "house church" services. Following sketches provided by the Rev. John T. Whiston, McCutchan

created a ceramic chalice and ciborium for the Capitola Episcopal church.

◇ ◇ ◇

Capitola Councilmen To Study Parking Meter Suggestion

The possibility of installing parking meters in the downtown resort area of Capitola will be considered at the Capitola City council's 7:30 p.m. meeting tomorrow at city hall.

The city's planning commission is recommending the meters be placed on the streets, possibly before this summer's tourist season, to help ease the cramped parking situation. The recommendation of the planners came after study of a report by the city's parking committee, which urged immediate meter installation.

Stockton and Cherry avenue and California street, according to the committee report. Commissioners hold that this plan is beyond current needs, but could be considered in the future with financing through formation of a downtown resort area assessment district.

The council is also being asked to contact the state division of beaches and parks, which controls the Capitola beach, as to any plans for state development of more parking facilities.

In other matters tomorrow night a public hearing is set on

Candidate Speaks



Timber Firm Seeks Ruling On Boundary

Big Creek Timber company is asking the Superior court to make a decision in conflicting survey lines on some 500 acres sold to the state by the company some two years ago. The land was added to Big Basin Redwood State park.

The plaintiffs, Frank McCrary, Frank McCrary Jr. and Homer T. McCrary, co-partners of the Big Creek company, say a 1957 survey and recent survey have discrepancies of approximately