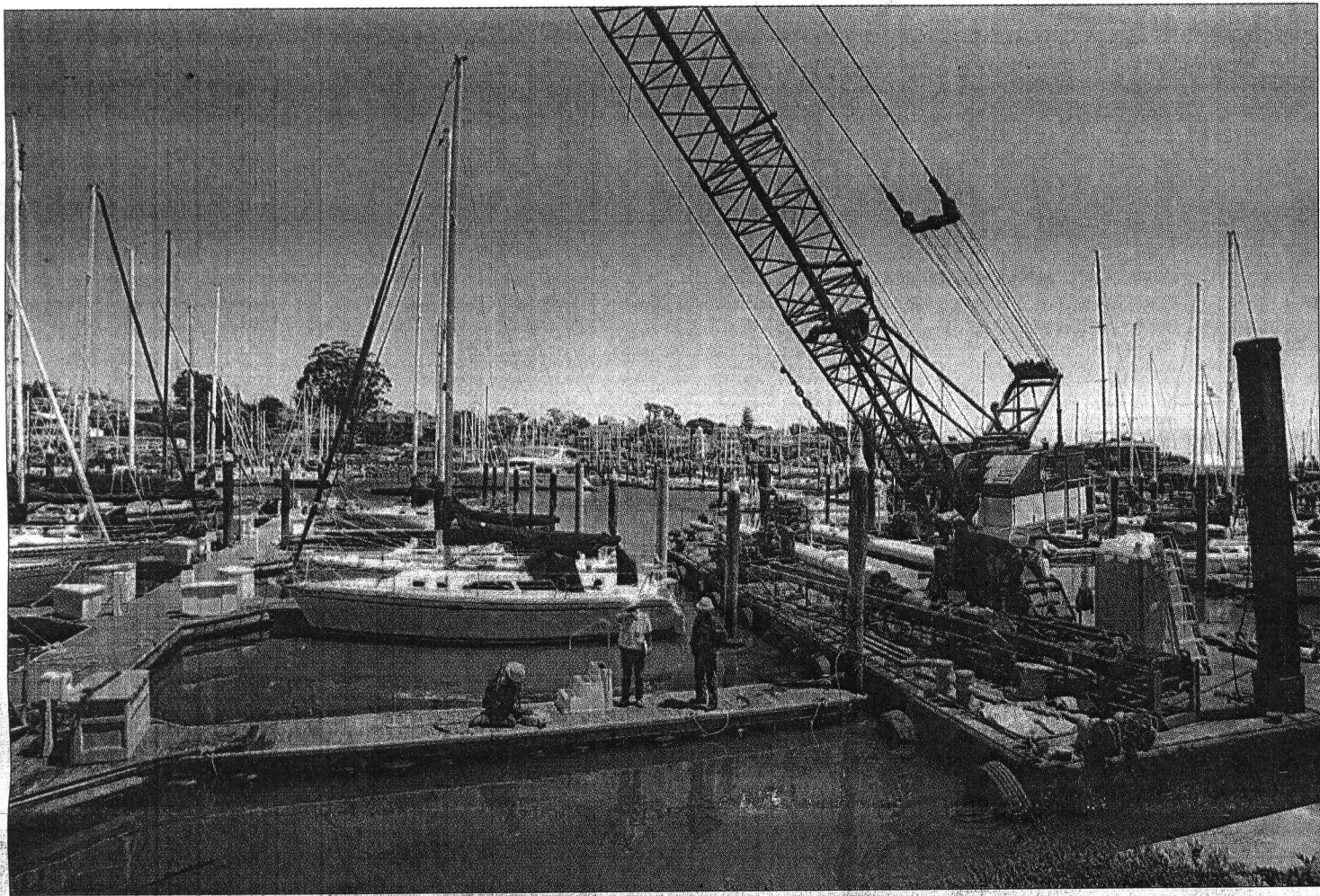


Harbor gets share of \$6.5M labor grant



DAN COYRO/SENTINEL

Workers use a floating crane to repair Santa Cruz Small Craft Harbor docks damaged in the March tsunami.

Funds geared toward hiring work crews to be divvied up between two counties

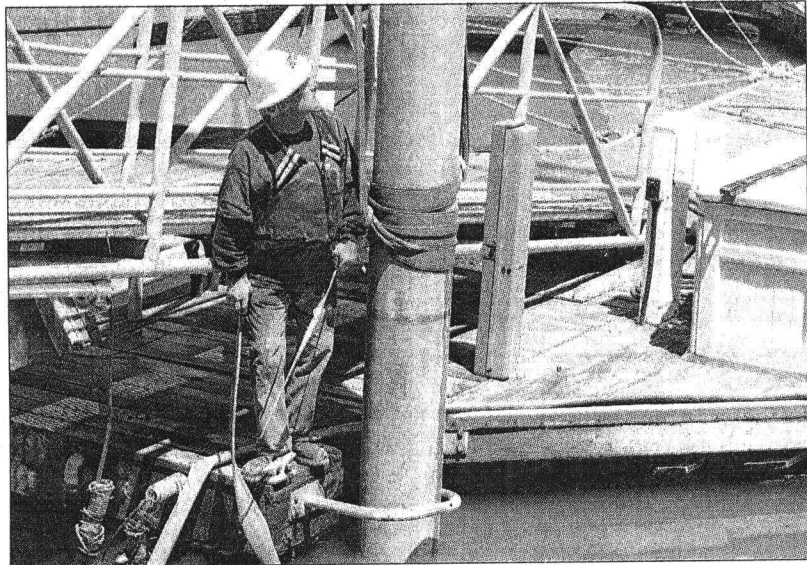
Harbor ²⁰⁰
By J.M. BROWN
jbrown@santacruzsentinel.com

SANTA CRUZ — Two months to the day after a tsunami ripped through the Santa Cruz harbor, damaging docks and sinking 10 boats, the U.S. Department of Labor announced Wednesday it has awarded Santa Cruz and Del Norte counties nearly \$6.5 million in grants to hire temporary recovery workers.

David Lundberg, director of the Workforce Investment Board of Santa Cruz County, which applied for \$1.4 million in National Emergency Grant labor funds, said it was not immediately clear how much money each county will receive. He said his agency will work with the Santa Cruz Port District and other organizations to determine how best to use the funds, but said general requirements attached to the funding include making temporary hires to assist with cleanup and repair efforts.

"There is 14 percent unemployment in this

SEE HARBOR ON A2



DAN COYRO/SENTINEL

A worker checks a dock piling in the Santa Cruz harbor as work begins to repair tsunami damage.

HARBOR

Continued from A1

county. We think there will be people, especially older youth 18-24, who would be interested in these work crews," Lundberg said. "We think we have agencies that could manage the work crews, but until we know the full strings attached, we can't make any decisions."

The funding is separate from the much larger federal disaster assistance requested by the Port District to cover an estimated \$28.5 million in damage to public infrastructure at Santa Cruz Small Craft Harbor. Crescent City's harbor in Del Norte County sustained about \$20 million in damage from the March 11 tsunami that was triggered by a 9.0 earthquake off the coast of Japan.

As pile driving work began Monday, Harbormaster Chuck Izenstark said the pace of recovery is slow but steady. Officials with the state and federal

RECOVERY EFFORTS

The Santa Cruz Port District has created a new section on its website dedicated to recovery efforts. The address is www.santacruzharbor.org/tsunamiRecovery.html.

emergency management agencies have been working at the harbor this week to document expenses eligible for reimbursement, but the harbor is drawing on reserves in the meantime to cover repairs.

"It feels like there is a lot of work left to do still, but this is just the beginning," Izenstark said.

The district has hired Washington-based Bellingham Marine Industries to do the emergency replacement of U Dock, the most severely damaged dock. It is located just inside the upper harbor, where the tsunami waves intensified

inside a narrow channel. Port officials expect the docks, constructed off-site, will be installed by mid- to late July.

The kayak racks once a part of U Dock are currently located at FF Dock, the permanent rowing docks, but new racks are expected to be constructed on U Dock by mid-August. Bids to tear down and rebuild the adjacent V Dock will go out next month with completion expected in October.

By the end of May, crews are expected to complete new framing for the headway on I Dock and finish utility and decking work. The commercial fishery dock is expected to reopen by mid-August, and a more complete engineering inspection of damage in the lower harbor is expected next week.

In a statement accompanying Wednesday's news of the grant, U.S. Secretary of Labor Hilda Solis said, "The tsunami wave surge brought serious damage to ports and coastal areas in Northern California. The people who live there deserve our support as they rebuild."