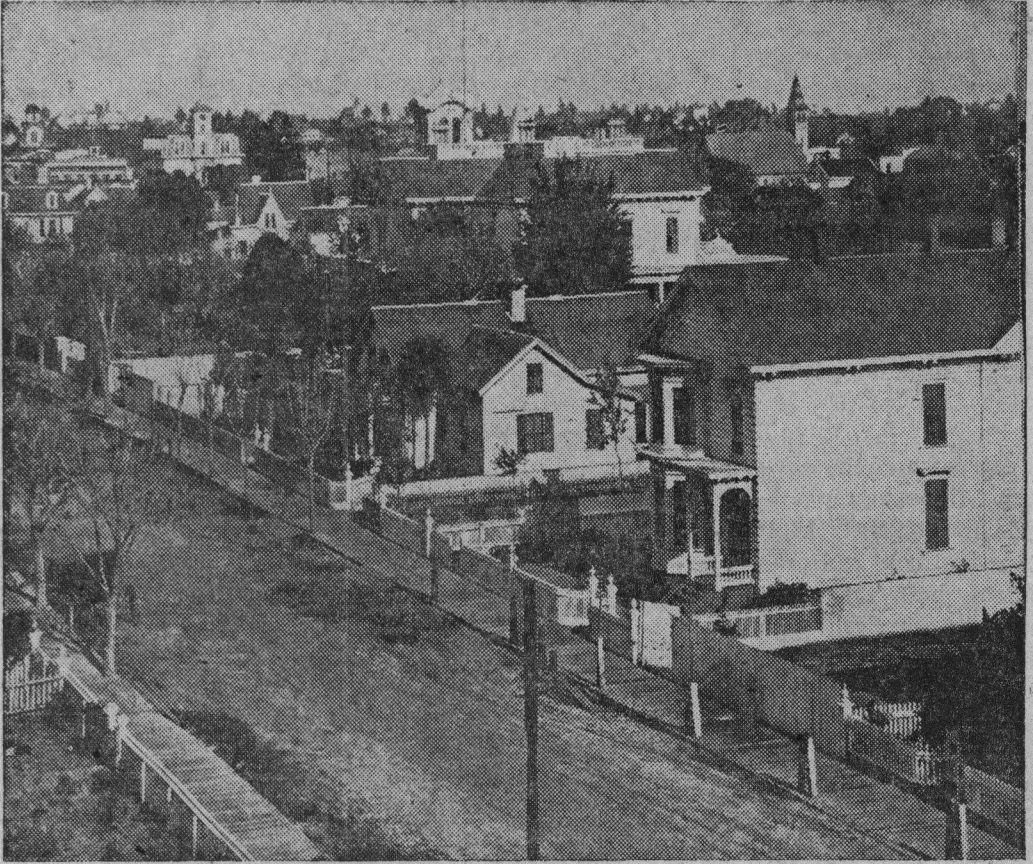


SANTA CRUZ YESTERDAYS



BOARD SIDEWALKS AND DIRT STREETS

(From the Preston Sawyer Collection)

Camera magic has preserved for today's viewers a glimpse of the "flat" from Mission hill above Chestnut avenue, where the lower section of Locust street ends, in the days when our grandparents were young.

It was a much smaller Santa Cruz in those days, which still retained somewhat the aspect of a New England community. Picket fences, wooden sidewalks and dirt streets are of the past. Street-side trees barren of foliage and the mud indicate wintertime. But no eastern snow is seen!

A block to the left the Mission hill tunnel opened upon what was at one time the depot area. At Park street also, was for many

years the famed Knight Opera House, scene of glittering stage shows, musicals and pageantry long before Cinerama came.

The two residences near the foreground still stand, somewhat modified in appearance.

Hihn Mansion

Centered in the near distance is the ornate F. A. Hihn residence, home of the town's "first citizen" during its earlier stages of growth. Today's beautiful city hall stands on the site. The mansion itself served as the city hall prior to completion of the present one.

After Hihn's death at 84, on August 23, 1913, the home stayed in the family's possession until the city purchased it in 1920. Entire purchase price was \$25,000, on time. The property was 202½ feet deep, with a 287½ foot frontage on both Locust and Church streets.

The city offices had been previously in the 1877 city hall on Front street adjoining the old county jail. The present court-house annex occupies the site today.

First Court House

At the extreme left rises the first court house tower, visible near the upper corner. Built in 1867 the original court house was destined to go down in flames during the great fire in 1894, then only a short time away.

The pioneer Odd Fellows building and town clock, standing on the same site as today's is plainly seen, itself also burned, in 1899. Between the clock and the court house, on its Soquel avenue hill proudly stands the newly enlarged Branciforte school. This site is today occupied by Santa Cruz hospital.

Over at the right old Unity Temple on Walnut avenue, holds its steeple skyward. Shortly after the picture was made, it was moved by the Presbyterians from what is now the Wilson Brothers parking lot and Western Union location. The shift was to Pacific avenue and Cathcart, southeast corner, where it remained until the moving of part of it to East Santa Cruz.