

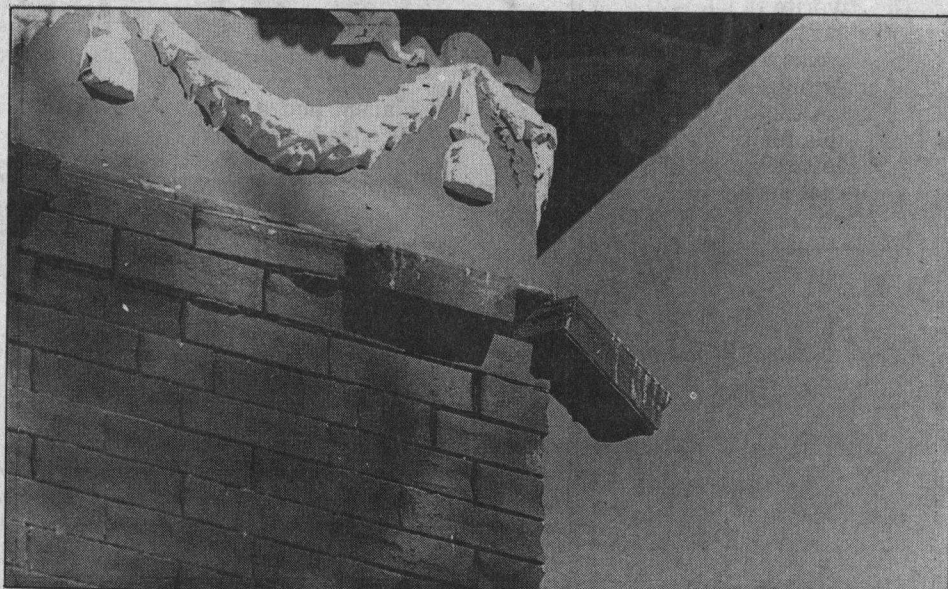
Building is history



CHERYL NUSS — MERCURY NEWS

The brick came down

A passerby, above, pauses to look at the rubble Thursday of the historic Trust Building in Santa Cruz. Late Tuesday, the city rejected an appeal to save the 1910-era building. The owners had planned earthquake repairs, but a March 10 fire, which investigators concluded probably had been started by transients cooking on the third floor, ravaged the building. At right is the brick that teetered from a corner of the building for two years after the 1989 Loma Prieta earthquake.



MERCURY NEWS FILE PHOTOGRAPH