

Big one hits home

**Earthquake
Edition**

REGISTER-PAJARONIAN

8 Pages — 25 Cents

Watsonville, Calif., Wednesday, October 18, 1989

Pulitzer Prize, 1956



Earthquake - S.C. Co. miss.

122nd Year — No. 195

6.9 earthquake is deadly

Five confirmed dead in SC County; hundreds homeless



**BY BOB SMITH
STAFF WRITER**

Santa Cruz County's death toll stood at five confirmed fatalities after the second-worst earthquake to hit Northern and Central California in the state's recorded history.

A fire continued to burn in the Forest of Nisene Marks State Park, moving slowly toward the inhabited areas of Aptos and Soquel.

Rescuers called off their search early this morning for one more victim in the rubble of the Santa Cruz Coffee Roasting Co. on the Pacific Garden Mall.

Hundreds remained homeless this morning in shelters set up in Watsonville, Capitola, Santa Cruz and the San Lorenzo Valley.

Highway 17 will remain closed for another two days. Highways 152 and 129 are also closed, with traffic diverted over San Juan Road and Highway 156 to Highway 101.

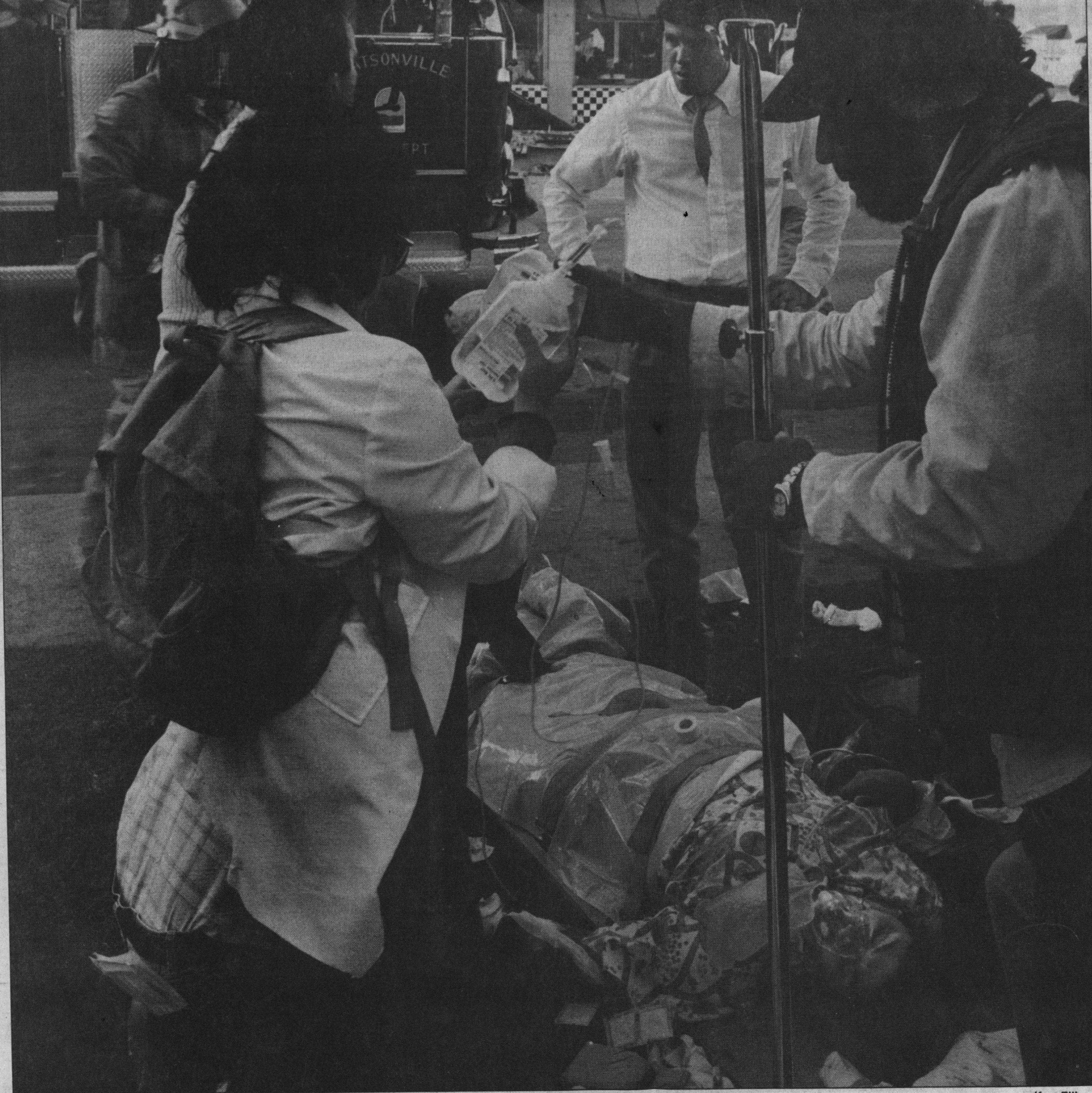
Authorities didn't have an exact count this morning, but they estimated that between 20 and 25 buildings were destroyed by fire yesterday evening and this morning.

They have confirmed that 40 buildings throughout the county collapsed, either in the main earthquake or in the numerous aftershocks that continue to rattle Santa Cruz County.

Schools in the Pajaro Valley district will be closed until Monday. The school board is scheduled to meet tomorrow to assess the damage.

The good news came this morning for the hundreds of thousands of residents who have already spent one night without electricity.

Pacific Gas and Electric Co. spokesman Greg



Kurt Ellison

Emergency personnel on the scene in Watsonville plaza after the earthquake.

Supervisors this morning at an emergency board meeting that the utility would begin turning on power to the Live Oak area between Santa Cruz and Capitola late this morning.

Rydquist said the massive transmission lines that carry nearly all of Santa Cruz County's electricity over the Santa Cruz Mountains from a switching station north of Gilroy would be back in service by 3 p.m. today.

Utility crews will then be able slowly — circuit by circuit — to restore electricity to the county's residential and business areas. Power started coming back on in the Watsonville area about 1 p.m.

Rydquist said it could be 72 hours before electrical service is restored to all parts of Watsonville.

The supervisors passed a resolution, ratifying the state of local emergency already declared by County Administrative Officer Susan Mauriello, and asking Gov. George Deukmejian and President George Bush to declare the county a disaster area.

Besides the five confirmed dead in the county, county officials now estimate the damage at \$250 million to private property and \$100 million to public property, including roads, water lines, sewers, and the like.

State and federal disaster declarations will make local governments and private property owners eligible for disaster aid.

There was no word this morning as to when or how disaster aid applications can be made in the county.

The fatalities occurred throughout the county. Two bodies were found in the rubble of the Pacific Garden Mall. Another on Jensen Road in Watsonville, and one, possibly related to the earthquake, was at a nursing home, county officials said.

The fifth occurred on Highway 1 between Bay Avenue and 41st Avenue when a motorist struck three fear-crazed horses that had wandered onto the freeway. The horses escaped from their corrals at Pasatiempo and ran all the way to Capitola. Three of the six escaped horses died in the traffic accident.

None of the human victims' identities were being released this morning by the Santa Cruz County Coroner's Office.

Residents along the summit of the Santa Cruz Mountains were virtually isolated from any sort of aid and the Sheriff's Office reported that four looters had been arrested in the area.

Air tankers and helicopters are battling the Nisene Marks blaze. The area is inaccessible to fire trucks and ground crews. Helicopters were shuttling from the fire to Monterey Bay to scoop up huge buckets of seawater to douse the fires.

Road closures this morning include:

- Highway 17 for at least two days.
- Highway 129 closed. Use San Juan Road as an alternate.
- Highway 152 closed.
- Highway 1 open north of Santa Cruz but closed in Watsonville at Harkins Slough.
- Highway 9 open, but with numerous landslides, boulders and trees on the road.

County roads and city streets closed include:

- Rodeo Gulch at Tree Farm and Mt. View.
- Eureka Canyon Road at Rider Road.
- Rider Road.
- Buzzard Lagoon Road.
- Bean Creek Road, one mile out of Scotts Valley and at Glenwood.
- Jarvis Road.
- East Cliff at Schwan Lake.
- Hazel Dell Road.
- Skyview Terrace.
- Old Santa Cruz Road.
- Old San Jose Road.
- Morrel Road.