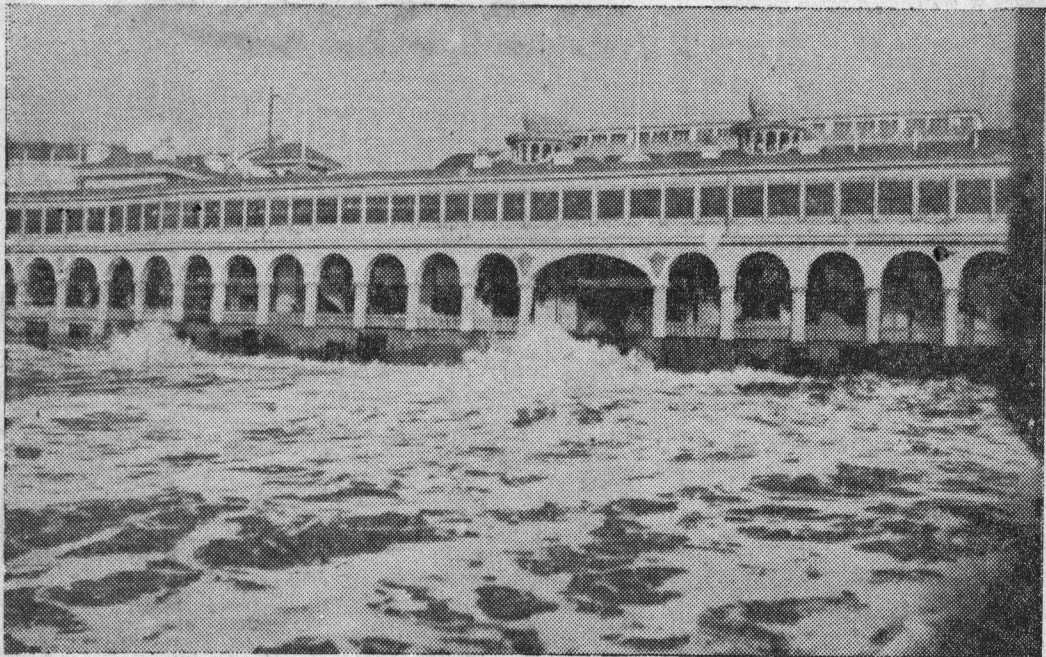


Weather

SANTA CRUZ YESTERDAYS



BEAUTY SHOW SITE ON A STORMY DAY

(From the Preston Sawyer Collection)

Waves of humanity are surging over the beach sands today in place of moist and angry sea waves cast up by this storm of 42 years ago.

The beach and Casino area in the picture, photographed on January 2, 1914, from the Pleasure pier, is the bandstand nerve center of today's Miss California coronation event. Every inch of available space in this area traditionally will be jammed with onlookers as 21 pulchritudinous lassies strut their stuff on the last lap toward the crown.

Not Like Today

But as 1914 dawned along the far-famed Santa Cruz beachfront the scene was greatly removed from that today existing.

The rain poured and the wind blew, driving great waves up on the beach and against the Casino steps, the rollers splashing on the promenade near the natatorium entrance.

All of northern California was hit by the disturbance. Rainfall records were broken in many

places. Here the river and creeks overran their banks (but nothing like last December 22). Vast amounts of driftwood were carried seaward by swollen streams.

After a slight letup New Years Day, the storm resumed. Before it had worn out, huge amounts of sand were carried away by the tides and wave action along the beaches. In front of the Casino money and valuables hidden in the sand were exposed. Everything from five dollar goldpieces to nickels, dimes and pennies were picked up by local "prospectors."

Sand Carried Away

Sand was washed out all along the beach. From the Hippodrome (today's "merry-go-round") to the

Scenic Railway (now the Giant Dipper), the sand was gouged out to a depth of three feet under the boardwalk.

At the Casino proper, baseboards of the great rotunda, by the sands, were carried away and the bandstand, then in its original location closeby, was damaged.

A later storm (February 12-13, 1926), more severe, brought on the wings of a real "southeaster," a 20-foot wave at high tide which almost simultaneously collapsed the main bandstand and the newer "al fresco" stage which had been erected about midway between the stand and the Pleasure pier. The present bandstand was developed thereafter.

Betty Grable Finds Racing Is Sport For Queens, Too

By James Bacon

Hollywood (#).—Now we know

the old days used to take months to make. A TV spectacular like

Capri Fisherman