

Leask's Animated Toys Play 'Serenade To Santa'

Stuffed Animals Carry On Store's 17-Year Tradition

By Margaret Koch

Only the little birds in the trees and the old mill wheel are still . . .

Everything else—from the owl to the pussycat—is either singing or playing a musical instrument or keeping time to the music.

Leask's famed animated Christmas window opened yesterday. Its theme is "Serenade to Santa." The jolly old boy himself is looking out a mill window, waving and nodding. Below him, Rudolph the Red-nosed Reindeer keeps time to the tunes in another window. (See photo at right).

The five groups of animated animals are of particular interest because they are Steiff stuffed toys—meant only for carrying and cuddling purposes.

In order to transform them into singers and players, their seams were split, part of their stuffing was removed, motivating rods were run through their bodies, then they were re-stuffed and sewn together again.

Each animal is individually controlled by a specially designed plywood disc. The discs are all run by motors. In charge of designing and preparing of the window was J. Earl Ricketts, Leask's display director, who has had 17 years' experience preparing animated holiday windows. Assisting was William Tripp who designed and built the "old mill."

Inside the store, main floor decor features oversize red and gold ornaments. Hovering over all are the Christmas fairies who, with their magic wands, "make Christmas dreams come true."

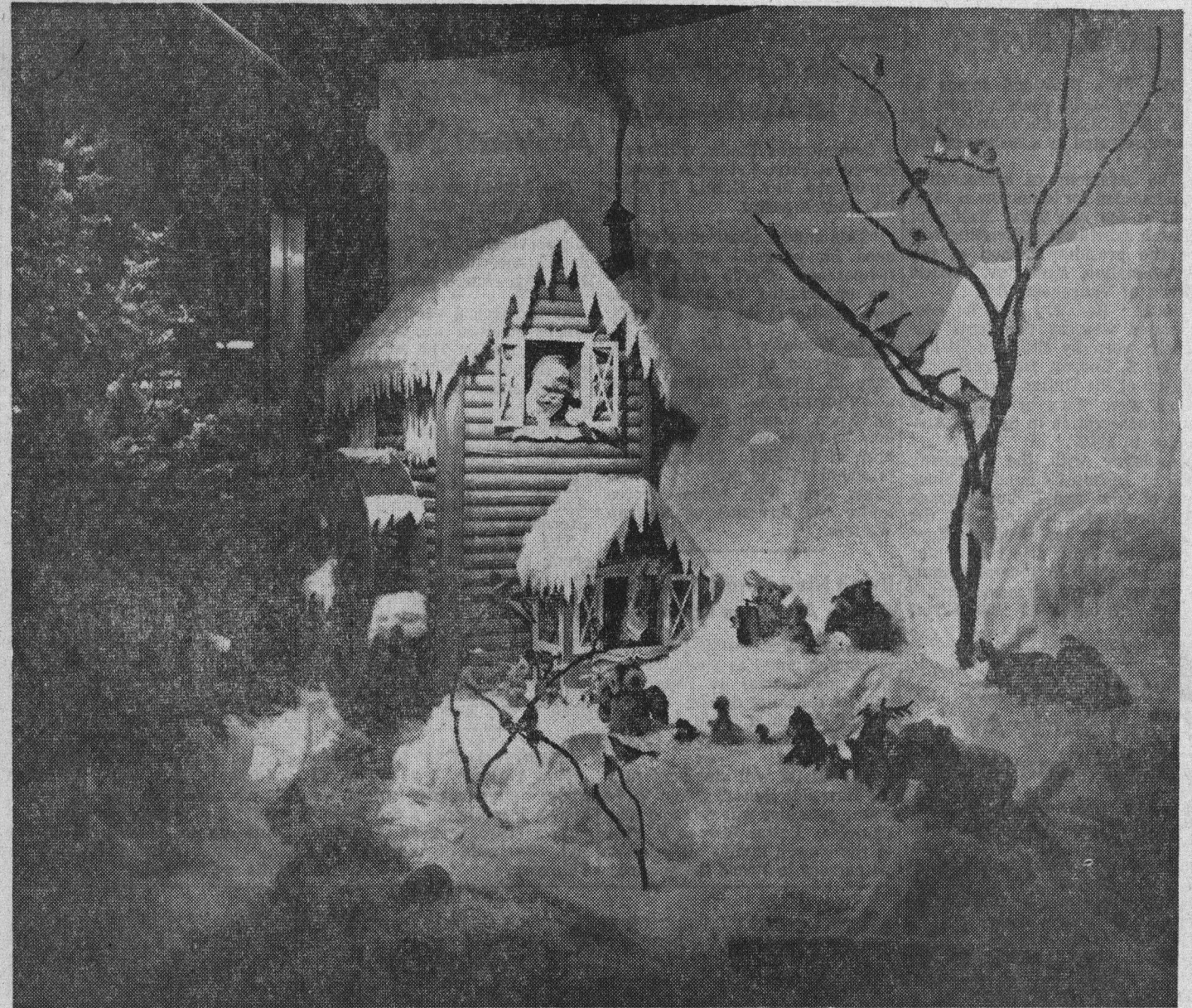
Christmas Tree Display At Riverside

Christmas trees, both live and artificial, have brought Santa Cruz recognition in the December issue of "Sunset" magazine.

The make-believe trees and other holiday decorations are those in the annual Santa Cruz and Sisters hospital auxiliary competition, scheduled December 6 through 8 at the Riverside.

The decorations will be judged and all will be on sale. Hours they will be on display are noon to 9 p.m. December 6 and 7 and noon to 4 p.m. December 8. Admission is \$1 for adults and 50 cents for children. Local choirs will sing carols.

The second mention of Santa Cruz in the December issue is that persons interested in obtaining a free list of Christmas tree farms should write to Mrs. Howard A. Nielsen, Secretary, California Christmas Tree Growers, 12,



500 Empire Grade road, Santa Cruz.

More than 30 tree farms in eight northern California counties are listed, including Santa Cruz, Monterey, Santa Clara, El Dorado, Marin, Napa, Sacramento and Sonoma, according to "Sunset."

Local Elks Club Plans Memorial To Kennedy

Elks club will hold memorial services Sunday for the late President John F. Kennedy and other fellow members who died this year.

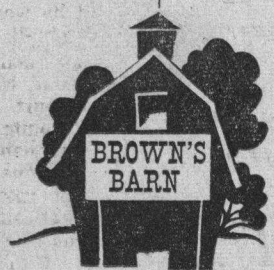
Services will be held at 4 p.m. in the Elks Lodge, 1214½ Pacific avenue.

Mr. Kennedy was a member of Boston, Mass., Elks Lodge No. 10.

Jerry Stanley, exalted ruler of BPOE 824, extends an invitation to all Elks to attend.

A buffet luncheon will be served following the services.

GIFTS
IMPORTS CLOTHING



SANTA CRUZ, CALIFORNIA
153 CENTER GA 3-3038

BOUTIQUE
clothing, including
l-o-n-g holiday
fashions

BARGAINS
in Xmas specials

Use your BANKAMERICARD

OPEN FRIDAY 'TIL 9