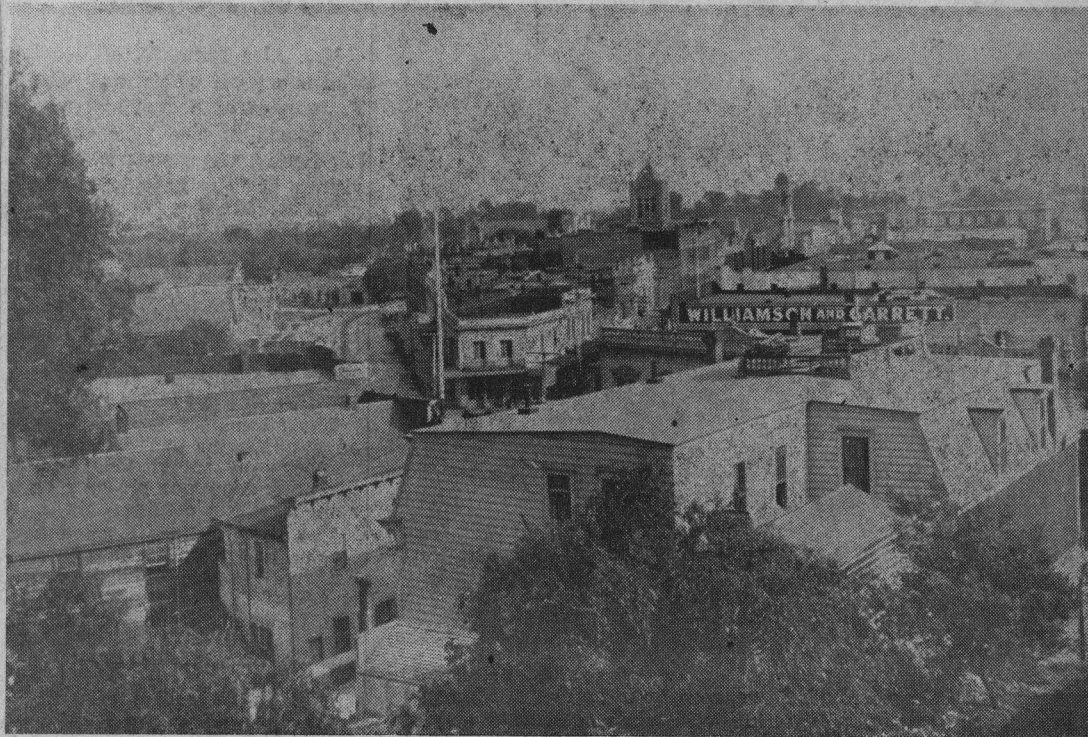


Santa Cruz Yesterdays



LOWER PLAZA AT TURN OF THE CENTURY

(From the Preston Sawyer Collection)

Six years after the big fire of 1894 this scene showed almost complete rebuilding of the business area between Pacific and Front, from the court house north almost to the Hugo Hihn flatiron building. A. P. Hotaling had rebuilt his St. George hotel, the present court house had been erected, with a tower which was damaged by the 1906 earthquake, repaired, and eventually removed altogether.

In the immediate foreground is the mansard roof of the St. Charles hotel, which had started in the late fifties as a two story building erected by William Anthony, made three stories high by Charles Brown in 1868, which stood until it burned in 1919. A Standard Oil station occupies the site today.

Site of Original Anthony Store

To the left, across a narrow thoroughfare which has since been widened into North Pacific avenue,

is a cluster of roofs of buildings including that erected in 1870 by Elihu Anthony, which replaced the original Anthony Building of 1848.

Down Front street is the blacksmith shop of Edward Foster at the corner of Cooper which, east to the river, was the old trail from the ford of Mexican days. Built originally by R. K. Vestal, the carriage maker, in the middle fifties, it had been the property of Edward Pagels until Foster, one of his young employees, bought it in 1864. Foster occupied it 45 years.

Over the St. Charles hotel can be seen the front corner of a two story wooden building which still stands. It had been erected in the nineties by A. P. Hotaling, replacing a one-story structure which had housed one of Santa Cruz' first stores, that of C. D. Eldon in 1851 and occupied at later times by George Peckner and Adam Gourley.

Fine New Business Block

South of it is the Williamson &

Garret building, erected only a year before the picture was taken, occupied by the firm which had started business in 1876 at what is now the Santa Cruz theatre corner.

Beyond to the south, is seen the roof of the Pacific Ocean House, sturdy brick structure erected in 1867, part of which still stands.

Farther down the west side of Pacific avenue are the third floor windows of F. A. Hihn's Alta building, erected in 1891, which stood for 47 years. It was razed in 1938.

In the distance, to the left of the court house tower, are the wooden battlements of the huge frame building, erected at Front and Soquel facing north, as the Fair Pavilion, in 1883, and which burned as the "Armory" in 1920. In 1900 it was still newly resplendent with its armory front. The large structure had been shunted backwards onto Front street, to face west, in 1895.