

Leask Grove Dedicated At Big Basin State Park

Leask Grove, a beautiful 10-acre primeval area, was dedicated as a part of Big Basin Redwoods State park yesterday in ceremonies near the base of Berry Creek Falls.

Later generations of the pioneer Samuel Leask family, uncovered a redwood bench, dedicated to the memory of Samuel and Clara Johnson Leask before about 100 friends, relatives and state officials.

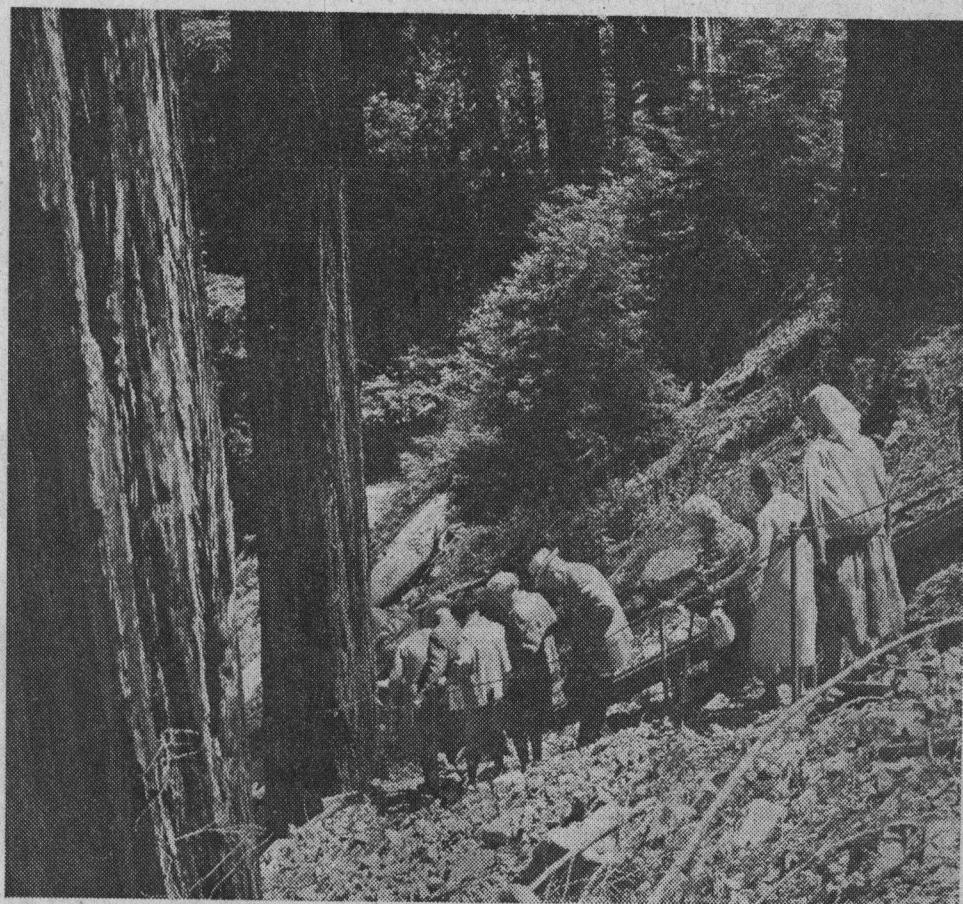
John DeWitt, assistant secretary of the Save the Redwoods League, praised the interest of the Leask family in acquiring the 10-acre site and traced the interest of the family in redwood conservation for more than half a century.

Samuel Leask Sr. and his wife, the former Clara Johnson, were instrumental in the organization of the group which brought about the initial purchase of 3500 acres to form Big Basin, the First California State park.

Jess Chaffee, district superintendent for the division of beaches and parks, represented the state at the brief ceremonies and expressed appreciation to the Leask family for their contribution to the park.

Claude (Tony) Look of Cupertino, a leader of the Loma Prieta chapter of the Sierra club, served as master of ceremonies and told of the history of the "Big Gulch" (the Waddell).

Look told of the first lumbering efforts of William



Some of the approximately 100 persons present for the Monday dedication ceremonies of Berry Creek Falls area redwood stand descend from a logging road to the

ceremonies area. The redwood grove, now known as Leask Grove, was saved from the woodsman's axe by the dedication of the trees by the pioneer Leask family.

Waddell, beginning in 1862, in the area and spoke of the development of the state park system, the cooperation of such agencies as the Save the Redwoods League, the Sempervirens club, and the

Sierra club in establishing redwood parks in California. He added the redwoods still face the threat of man in their fight for preservation.

Mrs. Emanuel (Leask) Ep-

stein, the eldest granddaughter of Samuel and Clara Leask, spoke on behalf of the Leask family (see picture on Page 16).

Her initial words were of the interest of the family in



A bronze plaque set in a redwood bench identifies Leask Grove as a memorial to Samuel and Clara Johnson Leask.

recreation and the wonders of nature and she closed her talk in a message for future generations of the Leask family to maintain this interest in conservation so that others may continue to enjoy such wonders.

"There is a string to the family circle," she stressed, "a string of responsibility of leave such wonders as the redwood for the people and the children of tomorrow to enjoy."

Among those in attendance were members of the Leask family, including Samuel Leask Jr., Haswell Leask, James Leask, Mrs. Margaret Leask Franklin and Samuel Leask III and members of their families. Howard King,

photographer laureate of Big Basin, Melvin Wright and Mr. and Mrs. Paul Pfeiffer of the Loma Prieta chapter of the Sierra club and Mr. and Mrs. Charles McLean, who allowed visitors to use the Waddell logging road to reach the site by automobile.

Leask Grove is located at the base of Berry Creek Falls at the confluence of Berry creek and Waddell creek about three miles west of the big Basin park headquarters and about eight miles up Waddell creek from the coast.

It contains first growth redwood as well as an extraordinary forest scene in a remote, but historic area.