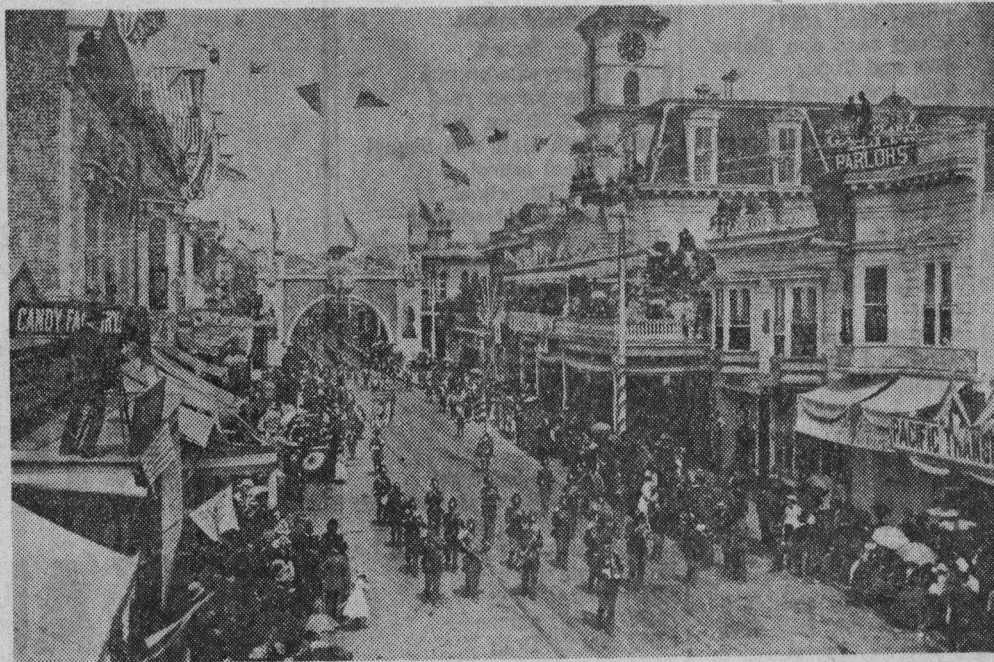


Admission Day A Big Day In SC Way Back When



By Margaret Koch
Sentinel Staff Writer
California was admitted to the Union as the 31st state just 115 years ago today. And for many years California's "birthday party" was a big event. Parades, brass bands, prancing horses and excited citizens turned out on Pacific avenue as shown by the old photo at right of 1886 from the Roy Boekennoogen collection. An arch has been constructed over

Pacific avenue with the grizzly bear in the place of honor at its top. The original town clock shows the time of day to be 27 minutes until noon. At left, on a candy factory roof, an old-time photographer is busy recording the exciting event. Over Pacific avenue, strings of flags flew in the breeze. Always most interesting to California newcomers is the state standard, the Bear Flag. This flag, older than the state,

dates from days when California was under Mexican rule. It was first raised at Sonoma on June 14, 1846, by a party of Americans who rebelled against Mexican rule. The first Bear Flag was

said to be a hastily contrived, homemade banner of white cotton cloth. The bear, star and stripe were painted on with linseed oil to which had been added a little color. Later, following California's ad-

mission to statehood, the California poppy was designated the state flower and the redwood named as the state tree. The Bear Flag was not officially adopted by the state until 1911.