

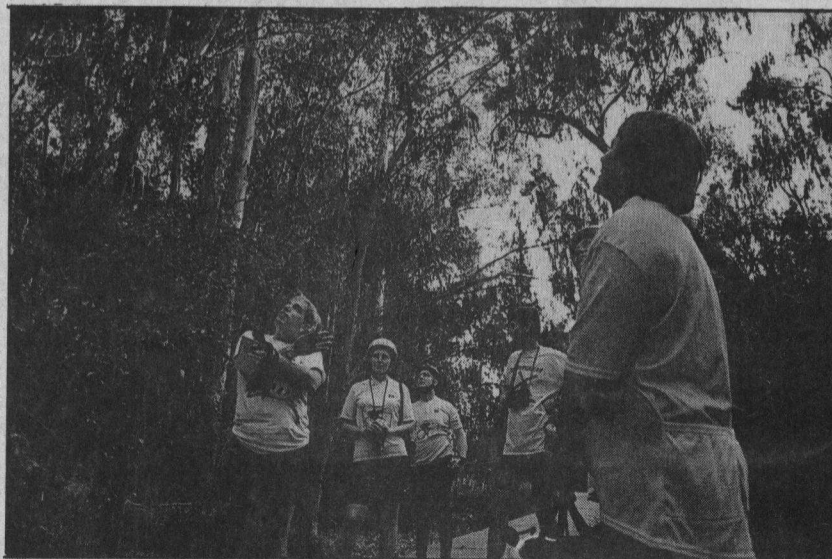
BUTTERFLIES

SJM 10-9-92
1-5

The monarchs return



The annual migration of monarch butterflies to the eucalyptus trees lining the trails of Natural Bridges State Park in Santa Cruz is just beginning. Most of the butterflies will arrive in late October. At right, Frank Pritchard of Aptos, standing far left, watches with his cycling companions as butterflies cluster at the bottom of the trail.



KAREN T. BORCHERS — MERCURY NEWS