



TWIN LAKES BEACH: exposed piling (left) from Santa Cruz-Capitola street car system; photo taken at low tide, March

area too shallow and they were torn down. Ships then used the present Municipality Wharf, but again the sand made this harbor unusable. The last freighter tied up to the wharf in 1936, said Skip.

* * *

Sand moves in mysterious ways.

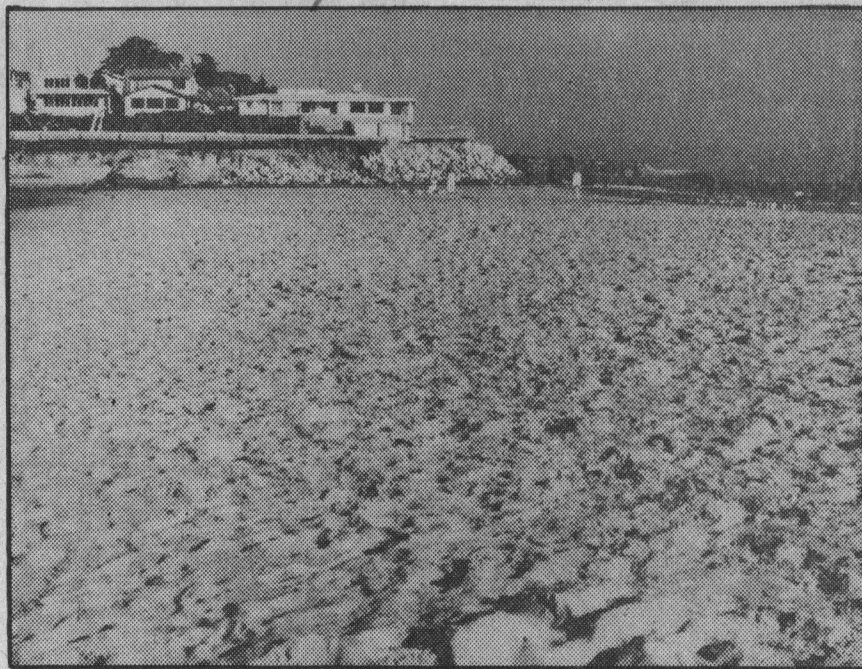
Recently much of the surfing action has swung from Lighthouse Point to the San Lorenzo River mouth, said Littlefield. A developing sand bar is producing excellent wave action.

This happens periodically and, incidentally contributed to the birth of surfing on the Pacific Coast.

"Ninety five years ago, when the sand was producing the best wave action at the river mouth, it all happened.

"Hawaii's King Kalakaua I, the only reigning monarch ever to visit Santa Cruz County, inspired Queen Kapiolani to send her nephews here to live while

Sentinel 9/10/82



1982. At right, the sand returns to cover the piling in photo taken one month later.

they attended a peninsula school.

Prince David Kawanakoa and his brother, Edward, amazed beach tourists by riding giant surf boards over the quarter mile sand bar extending from the river mouth.

"Those boards were solid redwood planks, made locally by the Grover Lumber Co. in 1887. They weighed over 100 pounds and were 15 feet long.

"Hawaii's immortal 'Father of Surfing,' Duke Pua Kahanamoku, remembered those boards when he surfed Lighthouse Point in 1938. The river mouth sand bar disappeared in 1920.

"Return of the sand bar off the river mouth this year is evidence of the shifting sand that is generally filling the sector," said Skip.

Thus, you have a couple points of view of our everlovin' money makin' sand.