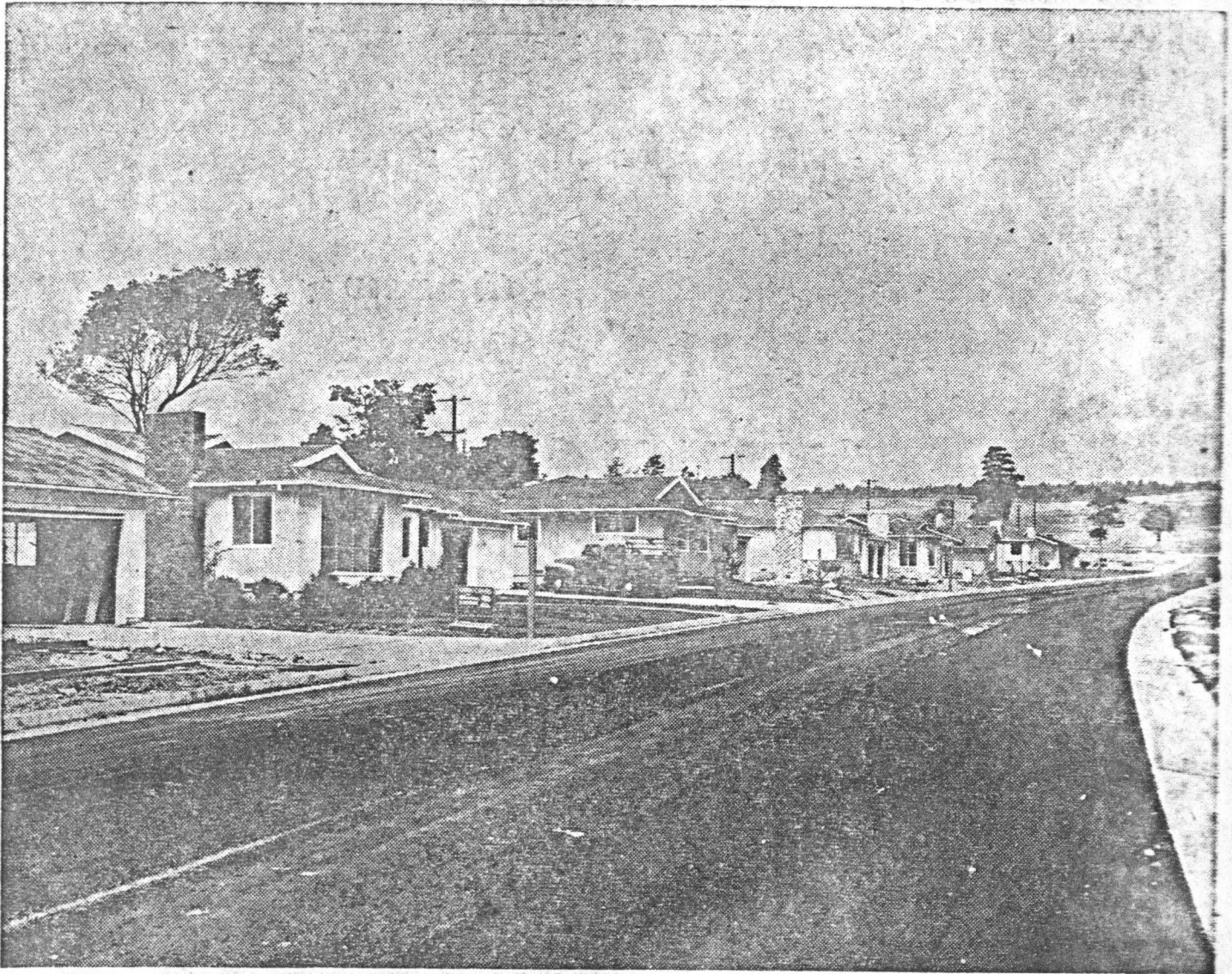


## A Preview Of Westlake's Future Beauty



Santa Cruzans will receive a preview this week-end of a new adventure in living when Victor Bogard opens his Westlake

subdivision for inspection. Located on 26 acres surrounding Moore street, the new development will include 70 homes

when completed. The above picture, taken before the paving on Moore street was completed, shows the first group

of homes. The Normandy-style home on the far left with the landscaping will be open to the public. It has been completely furnished by Eastern Furniture.

## New Residential Development Open

"Heralding a new adventure in living," Santa Cruz' newest residential development, Westlake subdivision, opens to public inspection for the first time tomorrow.

The grand opening of the West Side development, located on Moore street between High and Laurent streets, will center about a beautiful, three-bedroom furnished model home. The home will be open tomorrow and Sunday from 1 to 5 p.m. The same hours will prevail during weekdays with the home also remaining open from 7 to 9 p.m.

Victor Bogard, well-known San-

ta Cruz contractor, is the builder of the homes in the 26-acre area.

Bogard, who also developed the 46 homes in nearby Highland Meadows, plans 70 homes in the development. The homes will range in price from \$17,000 to \$30,000.

All the homes are built to Federal Housing Authority specifications and FHA loans are available.

One of the features of the development is that it is not a tract. Each home is individually designed by E. William Burr to the future owners' specifications. While each home is different they will all be harmonious in appearance. The exterior of the homes will have either colonial or Normandy styling.

Another feature of the new residential area is the new park to be built on approxi-

mately six acres of land donated by Bogard to the city of Santa Cruz. The park will include the lake from which the development's name is derived.

The homes are built on lots ranging from 76' x 100' to 100' x 100'.

All services, including curbs, gutters and paved streets, are included in the development. Rustic mailboxes are also included in the purchase price of the homes.

Minimum living space in the Westlake homes will be 1600 feet, and most will include three bedrooms and two baths, unless otherwise specified by the purchaser.

The model home, completely furnished by Eastern Furniture company, includes three bedrooms, two baths, family room and adjoining kitchen to give the latest in California living.

The kitchen, which adjoins the family room with a beautiful formica bar, is equipped with the latest built-in kitchen appliances.

Built-in kitchen appliances and other extra features are available to buyers at their request.

The model home has also been landscaped by Willoughby's nursery in both the front and back yards.

Bogard, who purchased the old C. C. Moore property last January, believes the development will be completely built within the next year and a half.

The builder, who authored the slogan, "Heralding a new adventure in living," believes the new residential area offers Santa Cruzans homes that will provide comfort, durability and increased value as both the development and community grow.

### Judge Will Rule On Mass Picketing In Apple Strike

Sebastopol (AP).—A Sonoma county judge was expected to rule today on a request to ban mass picketing and boycott activities in the drawn-out Sebastopol apple strike.

### National Guard Passes Review With Honors

Army and national guard brass gave personnel and equipment of Company F, 159th infantry, a long, hard look Tuesday but the local doughboys believe they

among ranks and checked 93 Company F's for neatness and soldierly bearing. Besides Col. Pugh, the inspectors included: Capt. Charles Ryan and Sgt. J.

Maddox, on the appearance, training and enthusiasm of the unit. His attitude indicated pleasure with the company's showing.