

# Your Last Chance To Save Stand Of Redwoods From Woodsman's Axe

## Public Can Contribute Funds To Save Waddell Creek Area

By Margaret Koch

How would you like to own a thousand-year-old redwood tree?

They stand like sentinels along a bubbly creek; it is laced with fern fronds and punctuated with singing waterfalls.

You can buy one of these great trees—or a limb—or a branch. Or one acre of the 100 acres of trees. You and you and you. All of you.

The American public is being asked to open its heart and pocketbook to save the last stand of virgin redwoods in the San Francisco bay area.

They are right here in our county—next to Big Basin State park. The Sierra club has taken the lead in the fight to save these Waddell Creek redwoods.

The land on which they stand was purchased in 1961 by the California State Division of Beaches and Parks. But funds for both land and trees were not available at that time and cutting rights on the property were reserved by Big Creek Lumber company.

There is an estimated 30 million board feet of redwood and Douglas fir lumber standing on the acreage . . . Plus the falls with the tinkling names: Golden Falls, Silver Falls, the Cascades and Berry Creek falls.

Hikers along Sunset trail which leaves Big Basin to meander through the area, have compared the giant redwood stand to the famed rain forest of Olympic National park.

It is a relatively small piece of wilderness: a cool green shining spot where birds flit through the lacy redwood branches and wild animals find comfort.

So do people.

But time to save these trees is growing short.

Frank McCrary and his sons, Bud and Frank Jr., owners of the timber rights, have been cutting "around" the great groves while the balance of the purchase price was being raised by Sierra club members.

\$30,000 is still needed.

This is the balance due by January 10 on the total of \$155,000.

The trees are safe for only a few weeks more. If the trees go the ferns will go. The creek will strangle in a flood of debris and silt. The falls will die . . .

It takes centuries to replace these things—sometimes they can never be replaced.

Your dollars will help. ONE dollar will help. Send a check to: Sierra Club, Mills Tower, San Francisco 4. Mark it "Big Basin Redwoods."

## Ballet Celeste Set Today At Auditorium

Today at 2:30 o'clock the Ballet Celeste dance company from San Francisco will perform at the Santa Cruz Civic auditorium.

The American Association of University Women is sponsoring the performance. On the program are portions of Chopin's, "Les Sylphides"; Tchaikowsky's "Sleeping Beauty," and "Philippine Festival," a group of Eurasian dances.

The Ballet Celeste was formerly a touring company exclusively, but now operates the Harding theater in San Francisco nine months of the year, making it the longest season of any ballet company in the nation.

The non-profit group, which includes children dancers, is sponsored by the City and County of San Francisco with a program closely patterned after the Bolshoi and Royal Danish Ballet companies. Ballet Celeste has appeared before audiences totaling more than 90,000 people. Tickets, which are \$1.50 for adults and 75 cents for students, will be sold at the door.

## 'Wrong Number' Said 7000 Times By Receptionist

Taunton, England (AP)—Diane Parsons will be happy next month when a new telephone directory is issued.

"I've worked it out," explained Diane. "I've said 'Sorry, wrong number' 7000 times."

Diane is a receptionist in an optician's office. The telephone is Taunton 2541. The Taunton railway station is 2641.

"But somehow," sighed Diane, "the station's number got printed the same as ours—2541. About 24 times a day I pick up

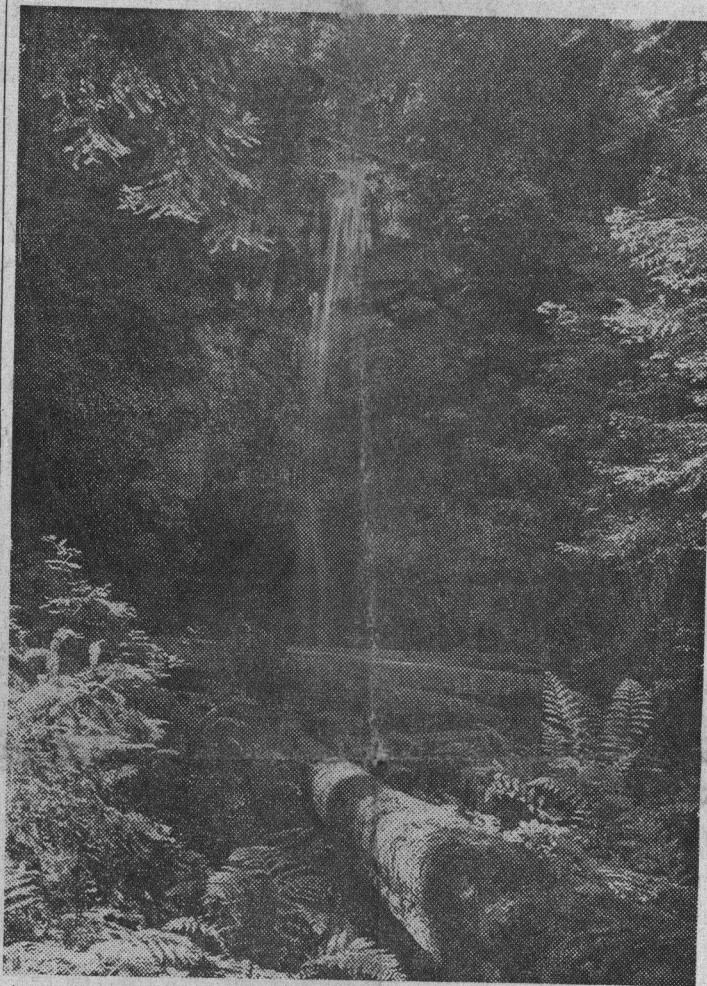
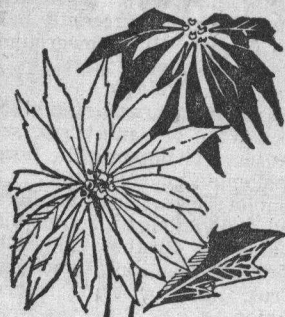


Deer are just one kind of the wild animals that live in the Waddell Creek area of redwoods next to Big Basin State

park. The Sierra club is heading the fund-raising drive to save the ancient trees, some of which are believed to be more

than 1000 years old. Mrs. Paul Pfeiffer heads the local Big Basin Tree committee of the Sierra club.

Trees provide jobs and income for 63 per cent of Oregon's industrial workers.



Waterfalls are not common in Santa Cruz county. Silver falls—about 80 feet high—is one of the most beautiful and is accessible to hikers and campers by trail from Big Basin. It is surrounded with the giant virgin redwoods—Sequoia sempervirens—which are in danger of being cut down after Janu-

ary 10, just seven weeks from now. Cooperating with the Sierra club in the effort to save the trees are State Senator Donald L. Grunsky, the Save-the-Redwoods league, the Frank McCrary family, owners-operators of the lumber mill, the California State park commission, Division of Beaches and Parks and private philanthropies.

## Youngsters Earn Own Yule Funds

A bunch of eager beaver kids at 1134 Morrissey boulevard have found a way to earn their own Christmas money.

For the next four weekends they are presenting a backyard Christmas fair, 1 to 3 p.m. Saturdays and Sundays.

Homemade articles will be sold and for a 10-cent ticket you can see a puppet show and a real live Santa Claus. All participants are 15 years or younger.

## OLDS 'TIL CHRISTMAS



First served with a