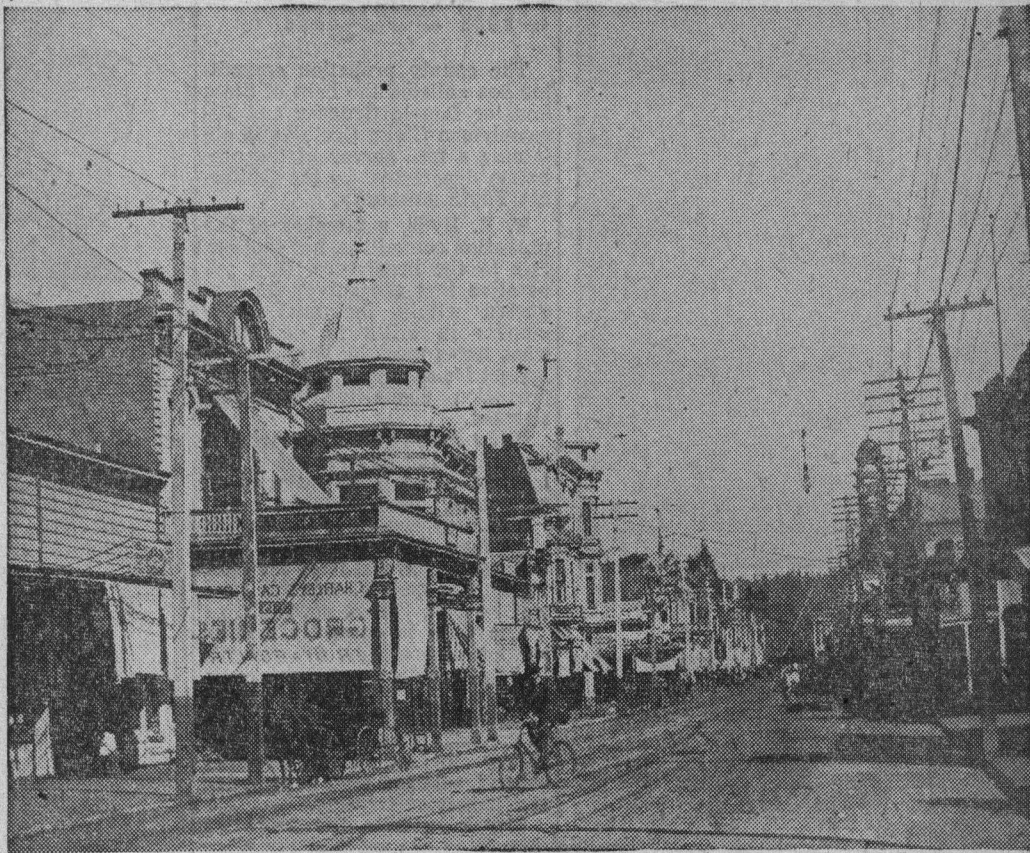


SANTA CRUZ YESTERDAYS



HEART OF DOWNTOWN 55 YEARS AGO

(From the Preston Sawyer Collection)

Downtown Santa Cruz of 1903 was photographed in the days of streetcars on Pacific avenue, with not a car in sight, in the above interesting view. Usually it was customary to include at least one trolley car in such pictures.

The Soquel avenue intersection is marked by the Old Corner Saloon, where the Trust building stands today.

On the near corner, now the Bank of America, was the Farmers Union building, a stock company, which launched into a regular department store business, with groceries, dry goods, flour and grain, hardware and agricultural implements.

Early "Co-Op"

The enterprise was the early day version of a "Co-Op". Farmers Unions were being widely formed in the late seventies. The one in Santa Cruz picked the appropriate center of the business district and erected a two-story building.

Pioneer J. B. Arcan's story-and-a-half residence was moved around on Soquel avenue and eventually became a restaurant, long known as the "Coffee Club". The purpose of the move was to clear the corner for the Farmers Union.

The frontage of the new building was 69½ feet on Pacific ave-

nue and it extended east 100 feet on Soquel avenue.

The Bank of America building was erected in 1929.

Two Hihn Landmarks

Both of the F. A. Hihn buildings loom attractively, at the Lincoln street corner and also at Walnut avenue. Each is set off with an attractive large cupola, topped with a weather vane. Only the building at Lincoln street remains, minus the rounded cupola.

A sign just visible over the

sidewalk at extreme right, "Peoples' Furniture Store," marks the site of what was the popular Unique theatre for many years revamped from a furniture emporium.

The Duncan House, with its great porch, looms at the left while the canvas drops here at "Charley's Cash Store — Groceries, Fruit and Poultry".

There are plenty of equine-motored conveyances in view even a bicyclist was caught riding across the car tracks.

Peter Edson's

Washington Column

NEA Washington Correspondent

Sen. Sparkman's Housing Bill Goes Beyond Ike's Ideas

Washington (NEA).— The new 2.0-billion-dollar housing aid bill introduced by Senator John Sparkman (D-Ala) throws the recommendations of President Eisenhower's budget message right into the wastebasket — and goes on from there.

The administration program had called for housing appropriations of 853 million dollars for next year — less than a third of the Sparkman recommendations.

But this is only a start. Senator Sparkman says he has other hous-

ing ideas, since the FHA rate is 5.25 per cent.

Senator Sparkman's bill would reduce down payments on Federal loans to three per cent on the first \$13,500. Present requirement is three per cent on the first \$10,000. NAHB was preparing to recommend three per cent on the first \$12,000 and 10 per cent on the next \$4000 but will welcome lower rates.

The Sparkman bill would create a Federal National Mortgage Association revolving fund of 1.5 billion dollars to purchase special assistance mortgages for home-