

Boardwalk Takes On New Look As 2-Acre Addition Is Gened

'Lost World', 'Autorama' Are New Features

A two-acre cement deck has been added to the eastern end of the Seaside company's boardwalk at the beach in one of the largest improvement operations in 50 years.

The new addition, started last August, houses mainly two modern amusement rides, the Autorama and a cave train to the "Lost World." A lower deck area covering also two acres will be used as a storage and maintenance center for boardwalk equipment.

Both of the new rides are now in operation.

The Autorama consists of 20 scale model sports cars powered by gasoline engines. Each car cost \$1700. They have electric lights and hydraulic brakes.

They are operated over a raised center strip on a 2200-foot freeway with cloverleaves, hills and bridges. They can be handled by drivers 9 to 80, and although there is a limiting safety rail there is still plenty of leeway for driving skill.

This area is lighted by 50 multi-colored mushroom lamps.

The cave train was designed by the same company which built the Disneyland cave train, according to Skip Littlefield, promotion director of the Seaside company.

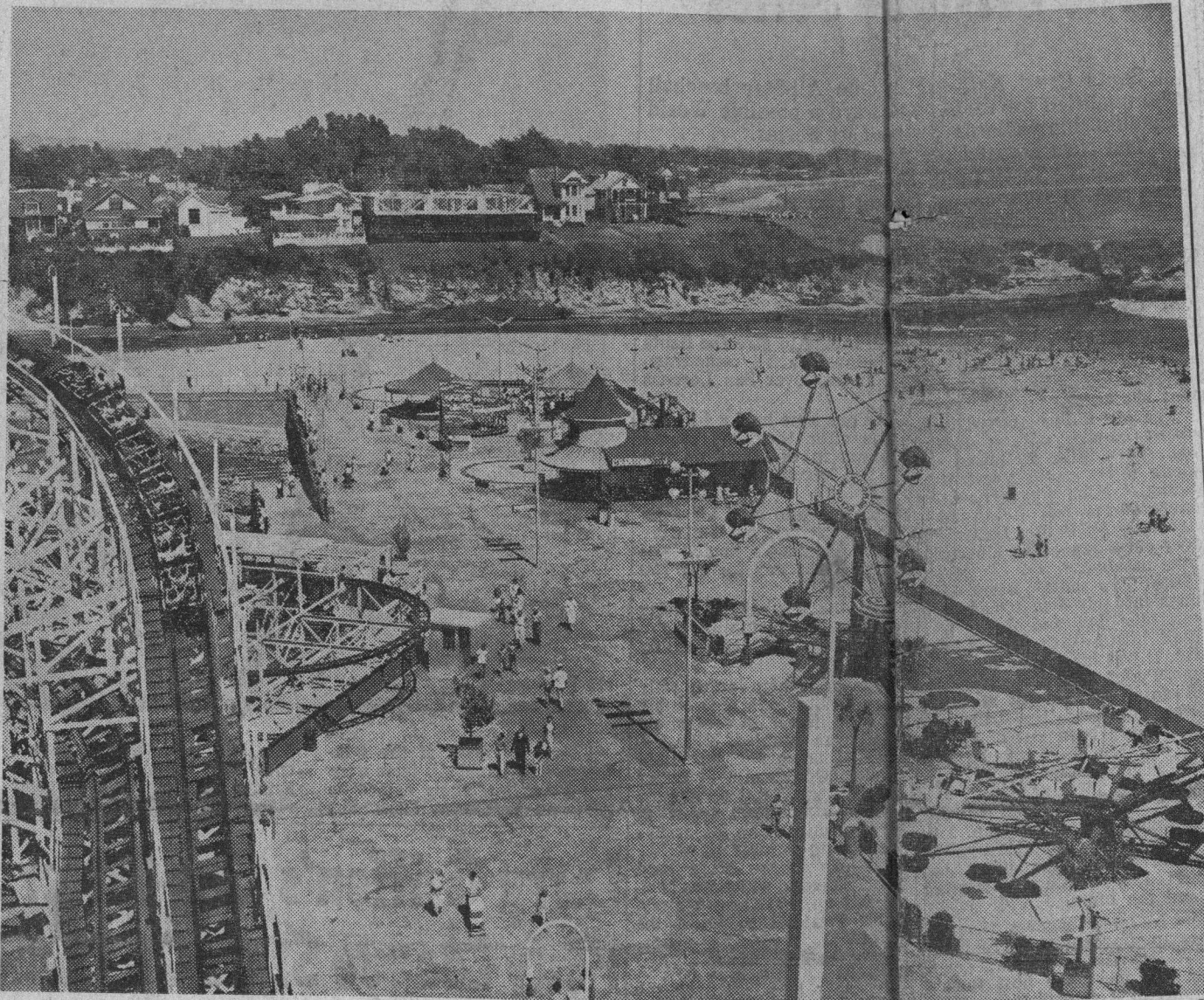
A 19th century puff-stacked engine, powered by two electric batteries, carries 48 passengers in four cars.

The train winds its way through a vast series of tunnels, caves, caverns, past underground lakes and waterfalls.

It runs through a revolving barrel which gives the illusion of turning over, through an area of "tumbling columns," past bubbling pots, and flying bats, through an area of beautiful fountains at the foot of a sprawling waterfall, past a "snoring cave man," a dragon's head, into a charging dinosaur, and through a cave man's camp which explodes.

All this is accompanied by changing sound effects as the train rolls through each scene. Lighting effects throughout are achieved by scores of strobe lights.

Boardwalk Is Expanded For Two Rides



Admission to each ride is 50 cents.

Also part of the new addition are public rest rooms. A long ramp leads down to the rooms beneath the Wild Mouse ride.

To add mystery to the cave-train ride the 18-foot neck of a dinosaur rears out of a pond

every five minutes dripping water and snorting his ire at all the noise on the boardwalk.

The monster was designed in Germany as was the Wild Mouse which has been drawing steady customers this year.

The new addition covers the site of the first bath house erected on the Pacific Coast by Stephen Washburn in 1865.

To guard against winter storms, a sea wall was constructed first.

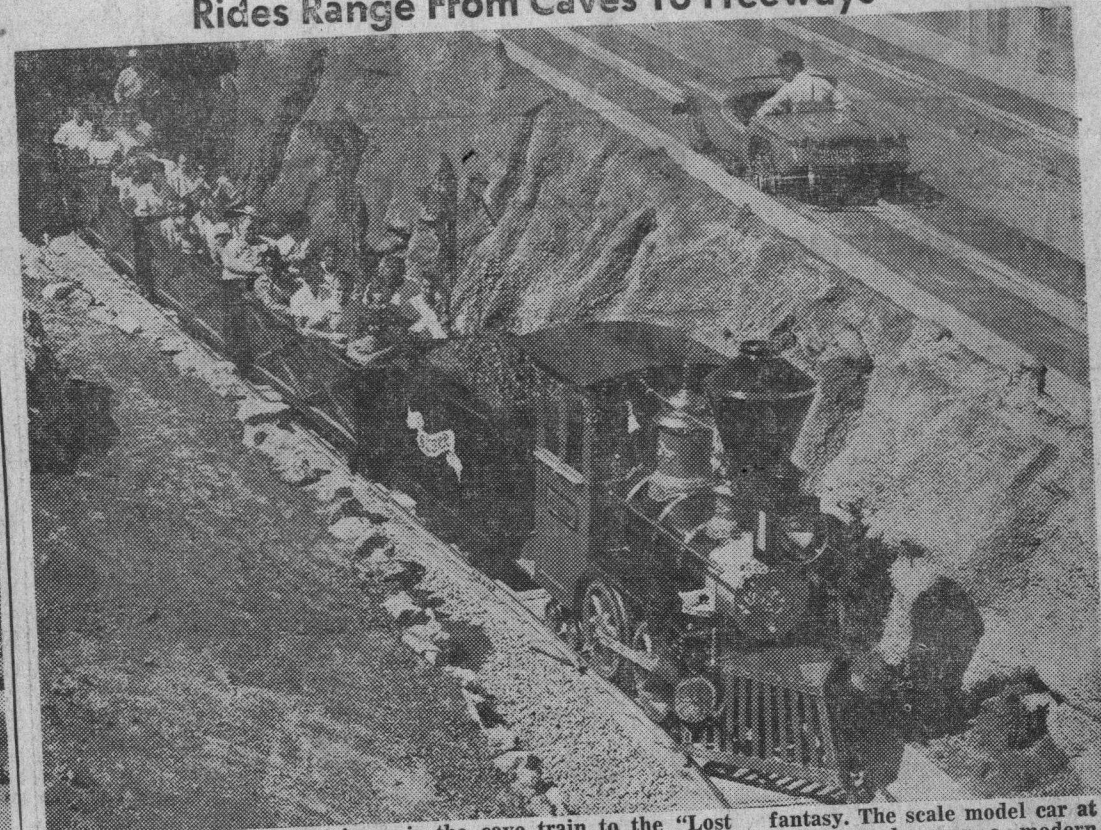
More than 1000 truck loads of cement were used in the construction of the wall and decks, said Littlefield. It took 72,000 board feet of lumber, 460 tons of steel,

Beyond the Big Dipper spreads the recently completed two-acre cement addition to the boardwalk. Besides the two new modern rides — the Autorama and the Cave Train, the area has given new room to the small fry rides and some of the faster-moving amusement equipment. New restrooms have also been added and are located beneath the Wild Mouse at left.

Science Removes Guesswork, But We're Purr Photographers

By Ward Cannel
Newspaper Enterprise Assn.
New York — (NEA) — The shutter snaps, catching prize picture of the year — thrown out by the consumer. "It's wrong to assume," a Berkeley says, "that the American consumer is interested in getting his money's worth." How did it all happen?

Rides Range From Caves To Freeways



Two of the new entertainment rides on the Seaside company's new addition pass each other at the boardwalk. Below is the cave train to the "Lost World". The 19th century engine takes its passengers through a world of subterranean fantasy. The scale model car at right travels over a modern freeway of hills, bridges and a cloverleaf.

Why Compromise?

HIGHEST QUALITY—LOWEST PRICE!

BUY Whirlpool

The Most Dependable Automatic Operation Known!

IMPERIAL MARK XII
(Model HA-91)

AUTOMATICALLY CHANGES ITS ACTION TO SUIT YOUR WASH!

MIRACLE TOUCH CONTROL! Press one fabric bar... then turn a dial! Automatically you get the right washing, rinsing, spinning action.

MAGIC-MIX DISPENSER FILTER! Automatically blends in detergent before it touches clothes. Automatically filters out lint all the time—even on



MAYCRINK

The Best in Warranted Used Cars

1960 CADILLAC SEDAN

the job. Prestressed and precast concrete was used throughout the project.

General contractors were Kabo and Karr of Visalia; and Granite Construction company. Consulting architect was Ronald A. White of Beverly Hills.

The overall planning was set by the Seaside company staff composed of Laurence Canfield, president; T. W. Cutting Jr., general manager; and William Fravel, superintendent.

at the
career.

Wh
this v
estima
cost
a the
hobby
twice
econom

But s
at any
and see
our mor
and kin
at the