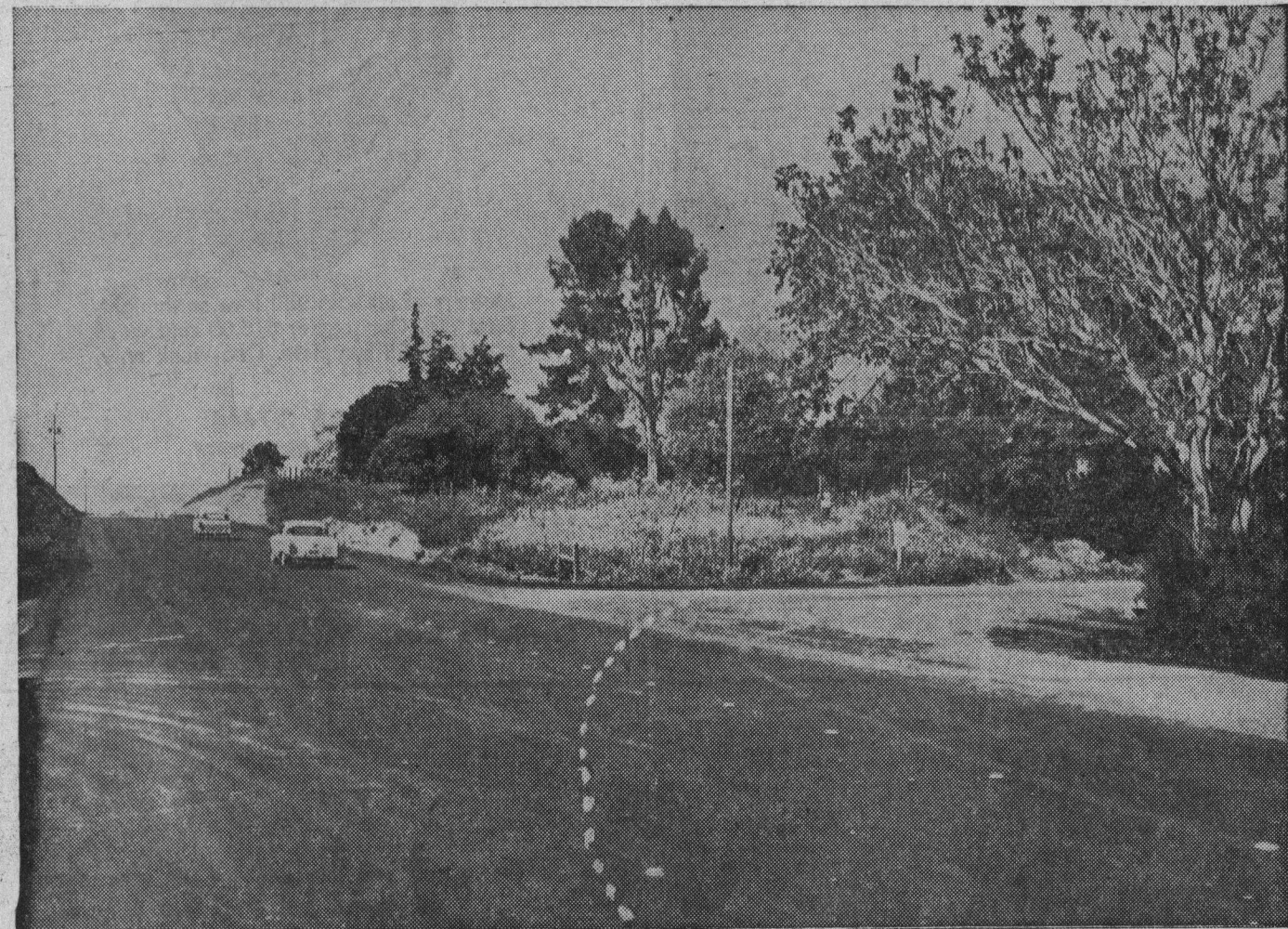
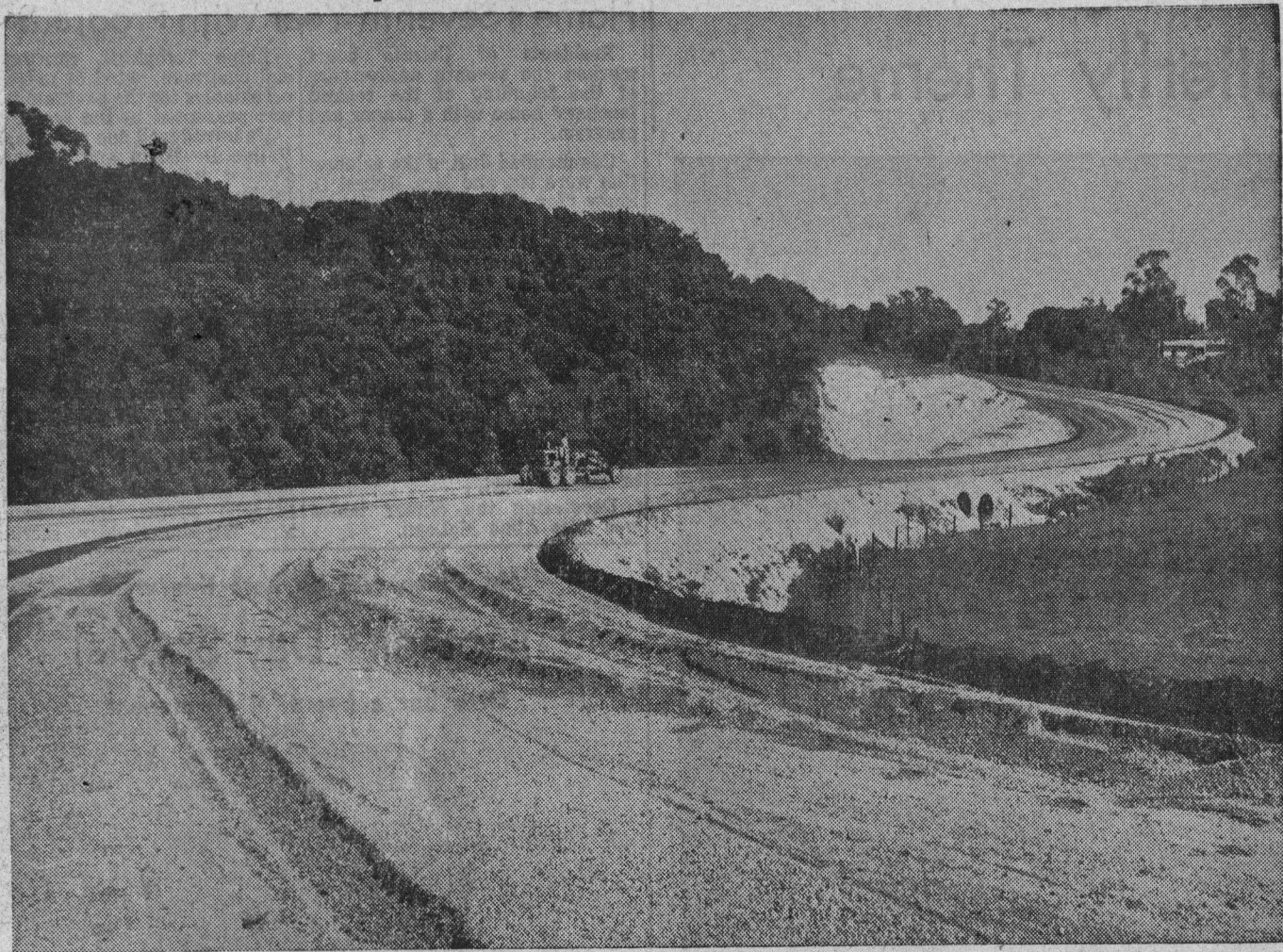


County Roads Realigned For Safety



Fair weather during the past winter speeded up realignment work on Capitola road between Seventh and Soquel avenues (upper photo) and Old San Jose road east of Soquel drive (lower), according to Fred R.

rrant, county road commissioner. Both projects, approximately a half mile each in length, eliminated dangerous situations, he said. The \$65,000, four-lane stretch of Capitola road through Arana gulch, pro-

posed for completion this fall, presently is expected to open for use by some 6000 autos daily by June. It was undertaken as a winter project for county crews. The Old San Jose road project was completed by Granite Construction company April 24. Comprised

of two 12-foot lanes with 8-foot shoulders, it eliminates the ever-dangerous, narrow loop (one end indicated by dotted line) just north of Soquel. It was a federal aid project, with the state and federal governments providing 90 per cent of the \$55,000 cost. Some 2000 cars use it daily.

Bu
U
C
A
I
can
are
con
nie
aim
eco
ing
hol
T
mor
por
of i
unt
jeo
tiny
B
live
pan
Fra
the
in
T
D
B
"T
gu
me
of
Be
I
cha
lin
at
wa
the
me
wi
cal
tio
are
po
tee
Ja
an
wi
Th
du
an
fir
co
W
de
to
W
ed
ce
ve
an
to
ch
T
C
p
F
tr
T
n
th
m