

RRSC Water Line
3/77

CITY OF SANTA CRUZ

WATER DEPARTMENT

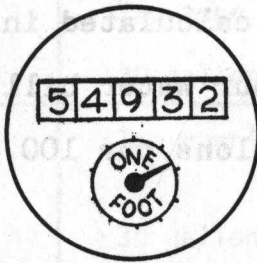
CITY HALL • 809 CENTER STREET
SANTA CRUZ, CALIFORNIA 95060 TELEPHONE 408 426-5000

HOW TO READ A WATER METER

Reading a water meter is not difficult and can be a substantial aid in helping to conserve water.

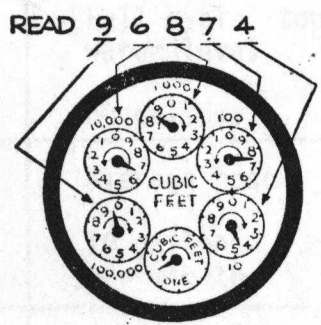
Residential water meters are generally located between the house and the street in a small rectangular cement box and will be one of two types.

Type 1



This straight reading type of meter is read like an automobile speedometer. When the small circular dial has made a complete rotation this indicates that one cubic foot (7½ gallons) has been used. The change will then appear on the last column in the five digit row. Therefore, if you have used nine cubic feet of water, the meter illustrated above would read 54941.

Type 2



The second type of meter is the circular meter. The circular meter is read by noting the figures on the dials as shown in the illustration. When a pointer is between two figures read

the lower figure. If a pointer seems to be directly on a figure, read the lower figure unless the pointer on the next lower dial has passed zero.

Certain circular dials have a long hand in the middle of the meter that records one cubic foot of use per rotation. These meters are read exactly the same as the regular circular meter except for this slight variation.

All water meters and bills are calculated in hundreds of cubic feet. If the consumption on your water bill reads 10, then you have used 7480 gallons (748 gallons per 100 cubic feet).