

Take San Andreas Road To The Bay Hasn't Changed Much--Yet--From

By MARGARET KOCH

It is still called Rob Roy junction by oldtimers.

And that is just about where you turn off Cabrillo highway to take the winding San Andreas road toward the bay.

The area is part of the old 13,000-acre San Andreas Rancho, a Mexican grant made to Joaquin Isidro Castro in 1883. Today it includes the Krag ranch, soon to be an extensive property development. The hills haven't changed too much yet, from the old California days. The yellow bush lupine blooms as luxuriously; the Cruciferae (wild mustard family) members grow in huge clumps. Cruciferae refers to "crosses," the position the petals of the flowers take.

From Cabrillo highway it's just about a mile to the entrance of "La Selva Beach, formerly known as Rob Roy. The name change took place in 1936 "La Selva" means "the forest" in Spanish.

Greeting the traveler at La Selva is a warning sign: Drive slowly — children at play. The garden-divided main street, Playa, is lined with homes, trees, flowers and kids.

The beach at La Selva is private. You can look at it from behind the locked gate. But never mind. Drive on less than a mile on San Andreas road to Manresa Beach. The name of an ancient Catholic retreat in Spain, it was first given to this area by Jesuit fathers who established a re-

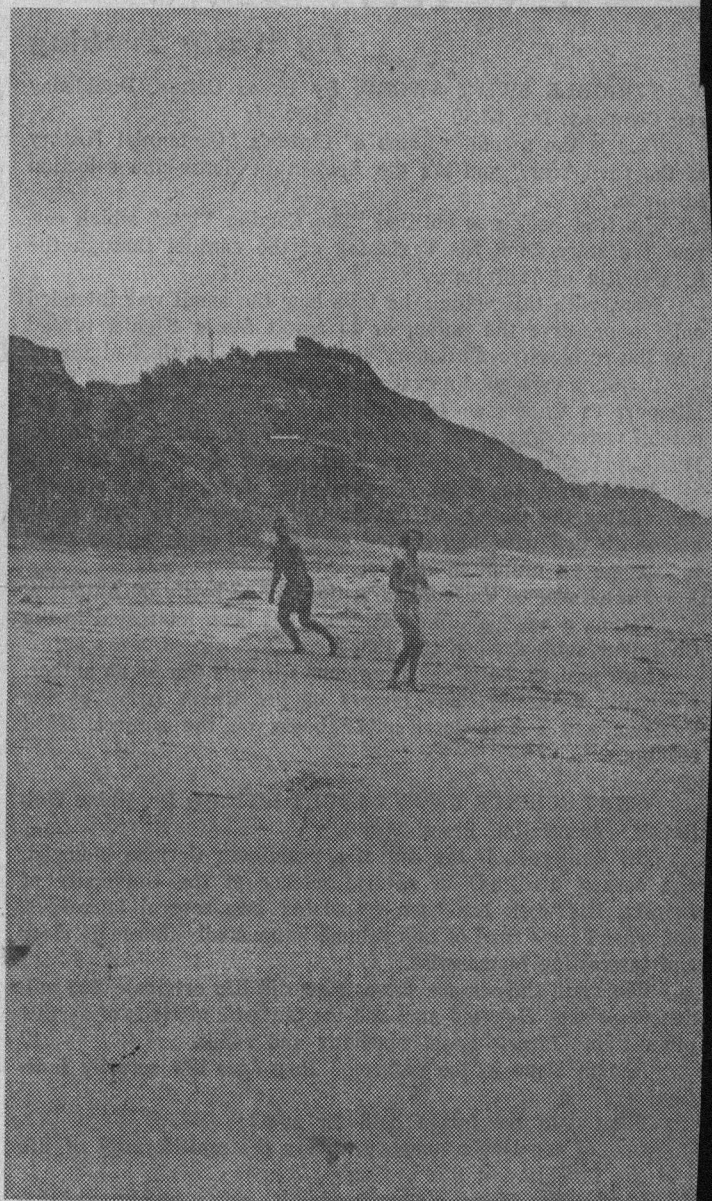
treat here. The black sands of the beach were mined for manganese during both world wars. They also have yielded minute amounts of gold. The last of the mining buildings were torn down in 1948.

From Manresa Beach the road winds gently through checkerboard hills, past fields planted to calla lilies, past three horses grazing at the bright green edge of a marshy pond. An old house is tucked into the fold of a hill here and there. Just over the rise is the full curve of Monterey Bay.

It is three miles to Sunset Beach. There are a signpost and flower-packing shed at the turn. Delphiniums, bulbs and vegetables have been planted in many of the fields lining the long straight road to the state park.

The park perches on the bluff and peers out to sea through a fringe of pine and eucalyptus trees. Tables and fireplaces are available in the grove and there is a 50-cent fee for picnickers.

The beach — well-known to clambers — lies at the foot



THAR'S GOLD AND MANGANESE — in them thar sands at Manresa Beach. The manganese was mined during both world wars and a small foundry stood near the beach.

Designs for Living

By Don Moore

of steps and a trail leading down the bluff. A sign warns that this is a "hazardous water area." There are no lifeguards present. So we recommend hiking, wading and "combing" instead of swimming.

And now, one last tale about

La Selva Beach. During the middle 1890's, its broad sands were the scene of heavier-than-air flight experiments which pre-dated the first successful flight of the Wright Brothers at Kittyhawk.

They were carried out with