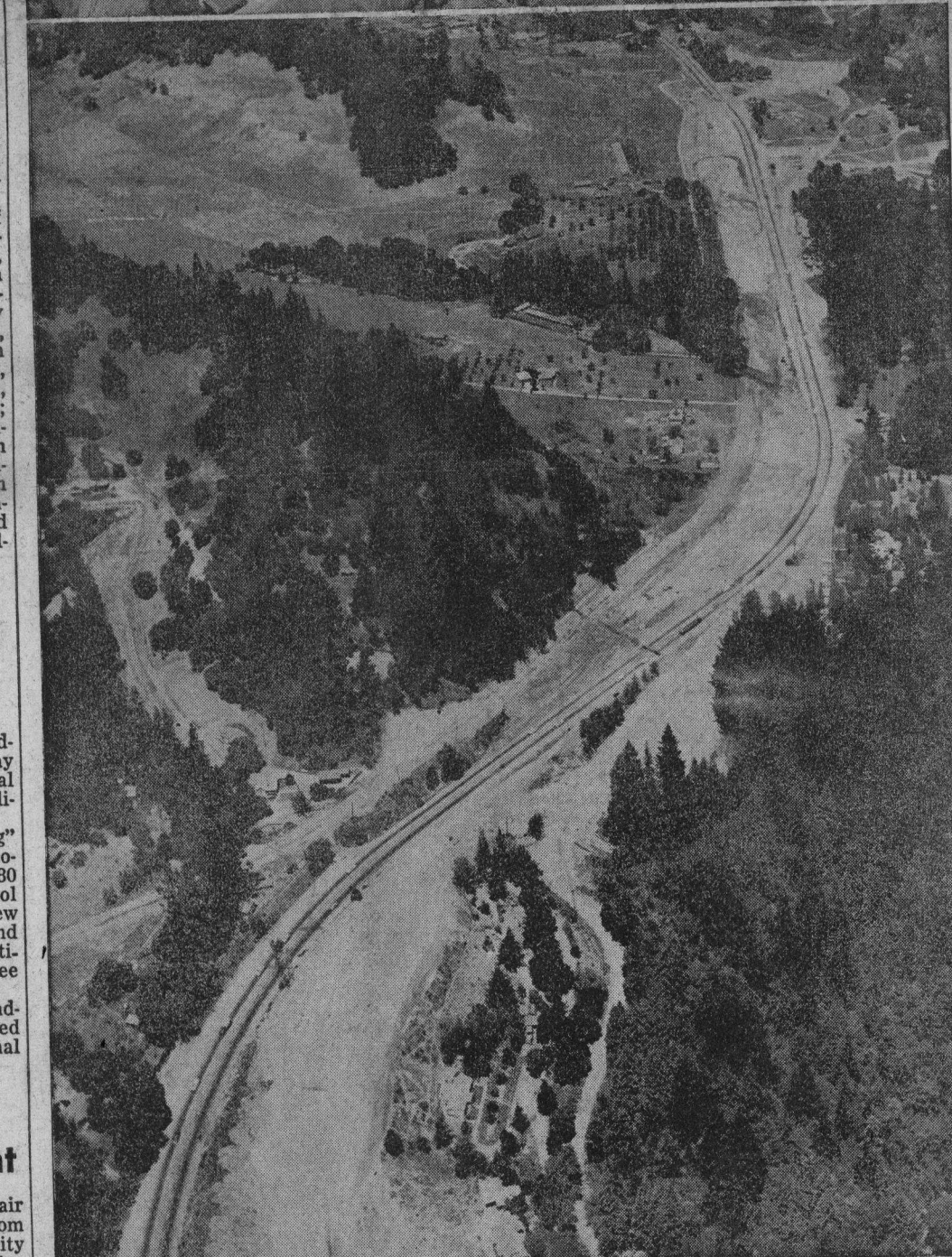
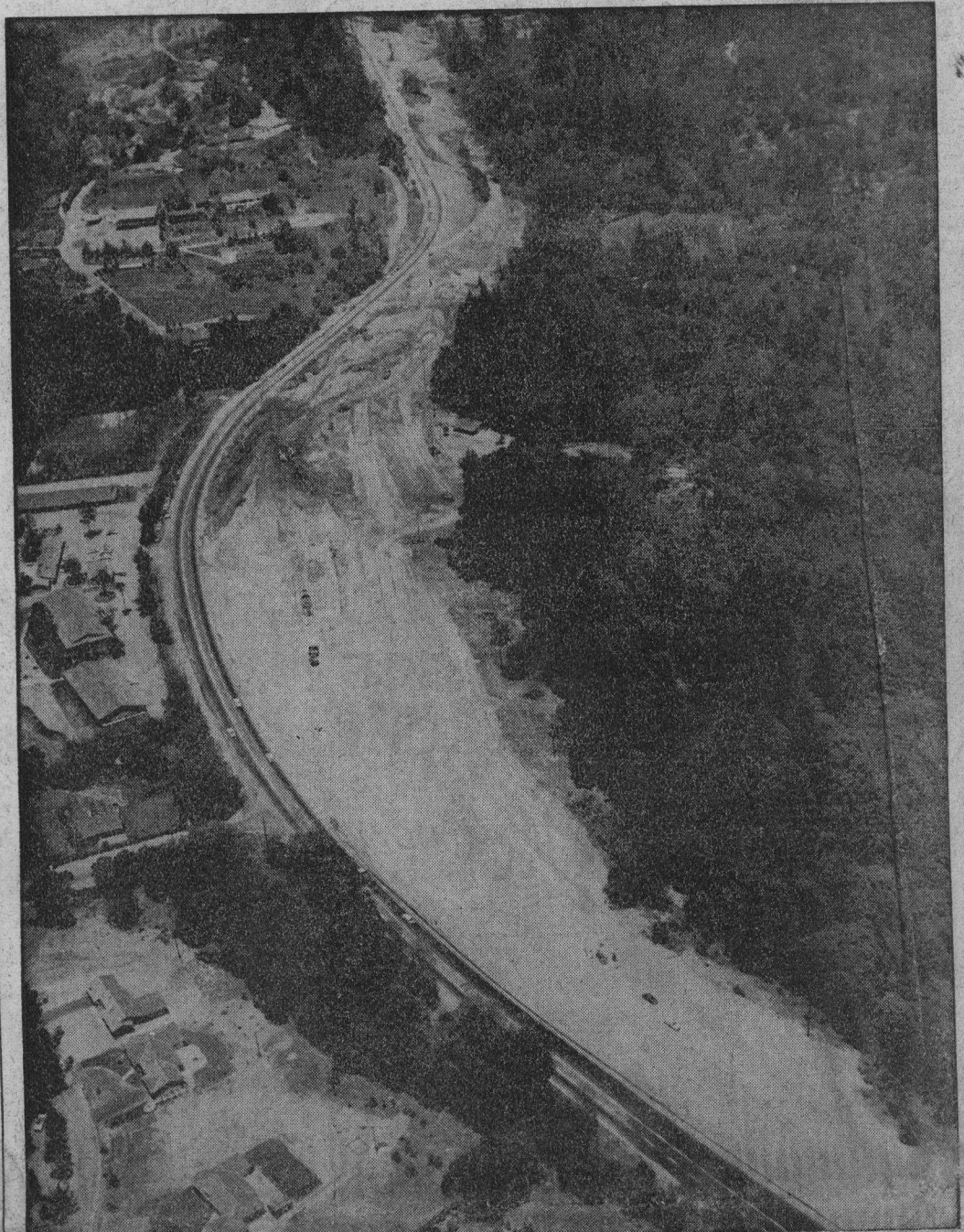


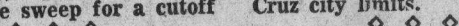
Work Progresses On Highway 17



Powerful dozers and scrapers are cutting a huge swath along either side of Highway 17 in preparation for the construction of four lanes of divided highway. The aerial photos above

show the progress on the stretch near Zanze's Rocky Falls restaurant about four miles out of Santa Cruz, top picture; below is the wide sweep for a cutoff

near the Pasatiempo Golf club turnoff, at left. The six miles of improvement will run from Manana Woods to the Santa Cruz city limits.



Mass Landing May Be Site For Sea Conversion

Ha
late
Presi
del
minis

Pro
the
still
expec
atten
there
might

Ma
who
tro a
treas
ily i
side
unde

Os
40-y
in
stra
fact
kn

ar
fac
di
"d
Cas
D

Cas
iste
the
H
cha
A
new

neit
D
will
Urr
dra
aga
tro

I
ped
Cas

to
in
al
m
ol
in
la
le
F

ru
Do
tro
ten
ma
of
re

Ca
fo
ar
hi

st
Ca
m
lu
al
C

r
s
f
n
s
a
s

1
s
c

t

g

a
p
r
o
r
i
t
y
d
u
r
d
a
y

e, 18,
both
ing 5
t 135
eyes.
s tall,
brown

e
s
y
o
r

f
y

w
e
l
f
h
a
t

d
i
l,
n,
r,
c
r
a
e
ss

is
e,
r

ts
te
d,
er

4,
n,
n-
el
u-
8,
ve,
N.
Y.

na
or
w-
el
hn
e,
on,
et,

re:
on-
ert
ar,
ve,
aul
el-

of
au-
all,
7th
\$1-
Bay
lon,
ean
ing,
nd,
80;
ad-
iam
en-
um
om-
and
rail-

t

Ad-
oday
nual
Cal-

ling"
n to-
an 80
chool
drew
and
esti-
three

tend-
arted
ional

ght

a pair
from
hority
urday

e, 18,
both

ing 5
t 135
eyes.
s tall,
brown