

Sum Shet

4/16/80

Erwin

Capitola

**WARNING
DANGEROUS SLIDE
AREA
NO TRESPASSING**

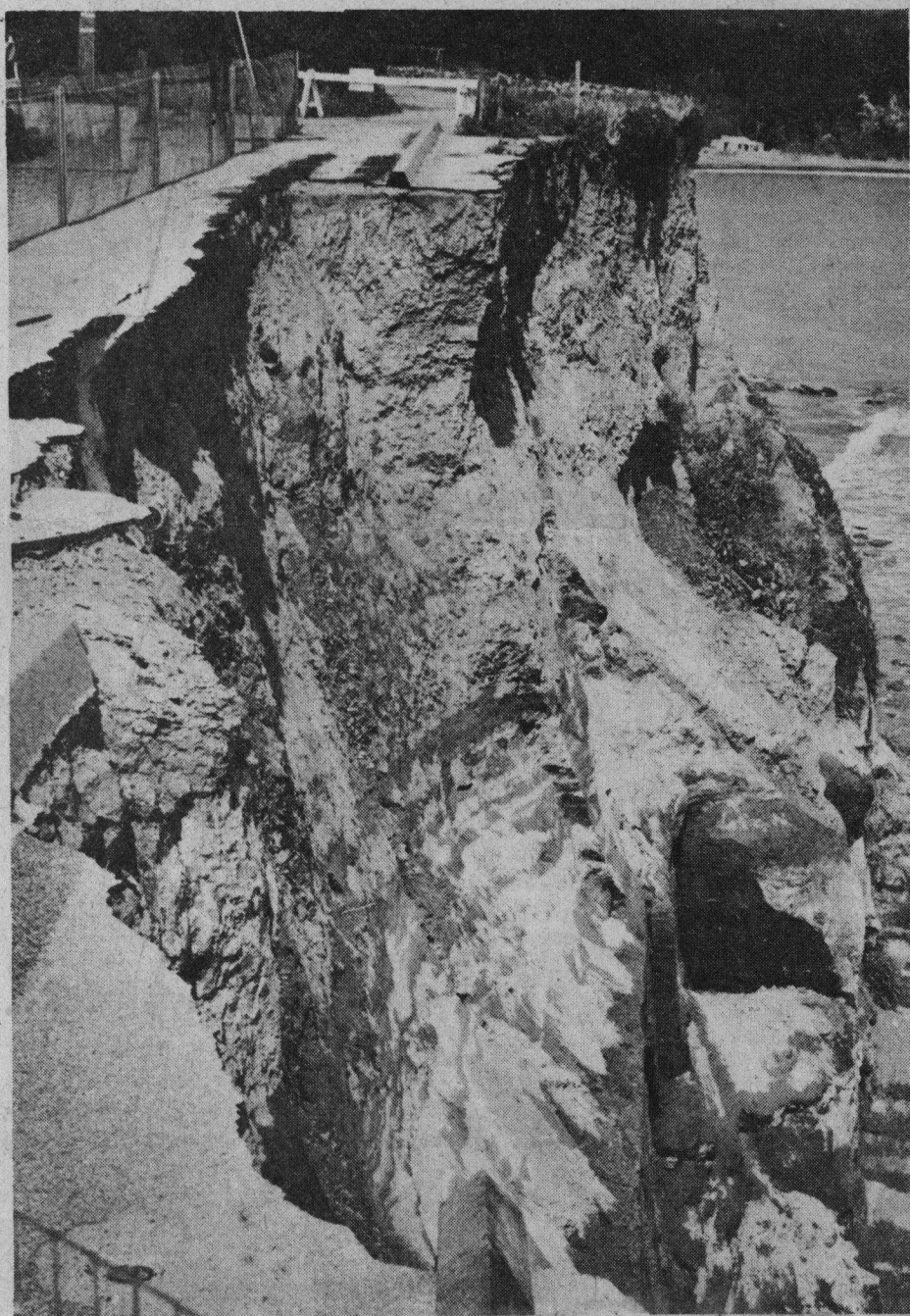


Photo by Bob Smith

Heed the warning

The peril posed by the crumbling sea cliffs is dramatically shown by this view of the cliff along Grand Avenue in Capitola, which continues to fall into the sea. Further west, a 19-year-old San Jose man was killed Saturday morning when he was buried under tons of dirt and rock at Opal Cliffs. He had been surfing and was sitting at the foot of the cliff when a huge portion of it sloughed off and fell into the sea. He, and two companions who escaped injury, had climbed over a locked gate and ignored signs warning of the danger. At the location pictured above, two separate slides Friday prompted Capitola officials to renew warnings to stay away from the bluffs and the beaches below them.