

EARTHQUAKE SPECIAL

Damages Soar As Bay Area Takes Stock

By John Wildermuth
Chronicle Staff Writer

The cost of Tuesday's deadly earthquake mounted yesterday as Bay Area cities and counties totaled the damages.

Although a number of counties have released early estimates of the projected repair costs, many of the areas hit the hardest have been unable to produce a figure.

Any estimates are likely only to increase as more evidence of the destructive power of the quake is found by the hordes of building inspectors now crawling over battered structures throughout the region.

Here is a county-by-county report on the damage:

ALAMEDA COUNTY — Oakland is the hardest-hit city in the Bay Area. Besides the devastating damage to the Bay Bridge and Interstate 880, a number of other buildings also felt the temblor's fury.

City Hall is closed indefinitely due to serious damage that includes a collapsed staircase. The building's dome is being surveyed for cracks.

Other downtown buildings closed include the Blue Cross building, the I. Magnin and Emporium-

Capwell department stores, the Hamilton Hotel, part of the Hotel Oakland, the Madison Park Apartments and the Port of Oakland administrative offices.

The county Superior Court House, 12th and Fallon Streets, and Administration Building, 1221 Oak Street, also were shut down, as was the Oakland-Piedmont-Emerlyville Municipal Court at 661 Washington Street.

CONTRA COSTA COUNTY — The Benicia-Martinez Bridge was closed temporarily by the California Highway Patrol yesterday afternoon when cracks were spotted in the structure. It was reopened in time for the afternoon commute.

The Marina Vista off-ramp, southbound on Interstate 680 at Martinez, remains closed with cracks on the underside.

Two county buildings were damaged in the quake, including the Veterans' Hall in Martinez. The hall has been closed until inspections can be completed.

MARIN COUNTY — A broken 14-inch water main broke in Corte Madera spilled water for about three hours. The Marin Municipal



Jay Veitenheimer's storage house slid down a hillside in the Santa Cruz Mountains along San Jose-Soquel road

BY DEANNE FITZMAURICE/THE CHRONICLE

Water District has had 21 mains break due to earthquake. The Novato Safeway, where part of the ceiling fell during the quake, is expected to reopen today.

NAPA COUNTY — No damage has been reported.

SAN FRANCISCO — Damage now is estimated at \$2 billion, with

most of the devastation in the Marina district, where 60 buildings may have to be demolished. There is also heavy damage South of Market, with structures on Folsom, Howard and Mission Streets between Fifth and Seventh Streets suffering the most.

A number of city buildings, including the Opera House, Laguna

Honda Hospital, the Asian Art Museum, the Main Public Library and the band shell in Golden Gate Park also were badly battered by the quake.

SAN MATEO COUNTY — Preliminary damage estimates for the county's 20 cities were set at \$35 million, but that does not include damage to county buildings in Redwood City and other county facilities.

The first three floors of the Hall of Justice in Redwood City were reopened yesterday. Many criminal arraignments were held in a makeshift courtroom where judges sat at foldup tables.

The turn-of-the-century courthouse is expected to remain closed

SANTA CRUZ COUNTY — A crack in a pipe at a sewage treatment plant in Santa Cruz is forcing the city to pump thousands of gallons of raw sewage into the ocean. Swimming and surfing is therefore not recommended in Monterey Bay.

In Watsonville, a series of strong aftershocks yesterday morning badly damaged the concrete piers of the main bridge over the Pajaro River, forcing its closure. St. Patrick's Catholic Church, which already had been condemned, received more damage from the aftershocks.

Although electrical service has been restored to all but about 30,000 residents, water lines have caused more problems. The community of

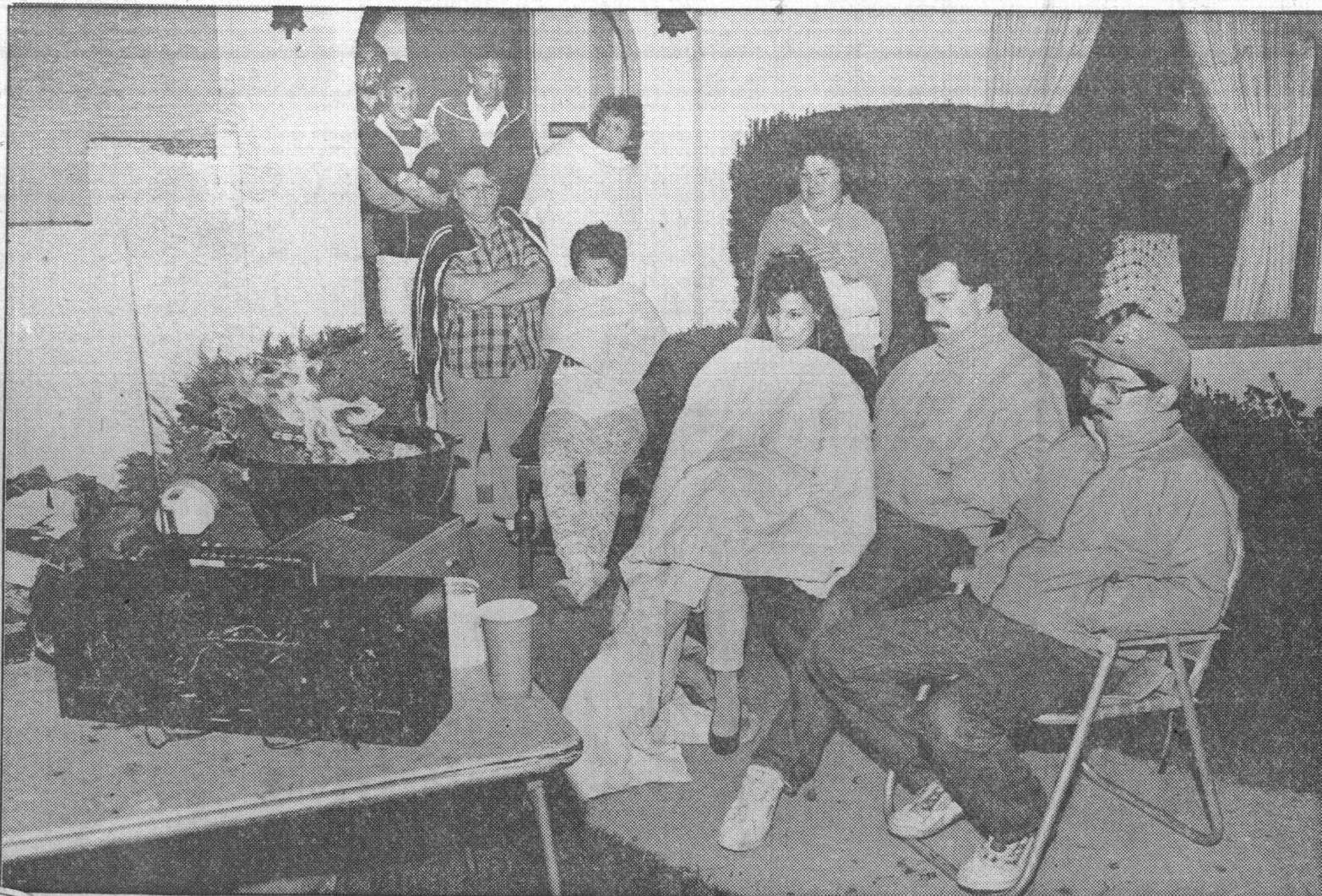


BY STEVE CASTILLO/THE CHRONICLE

Making the Best of It

Children from the De La Cruz and Shaffer families of Watsonville played together in the Shaffer front yard at 609 Brewington Street, where both families camped out rather than risk

sleeping in their homes. The Ceballos family, meanwhile, sat near an open cooking fire at their home and watched a portable television set for news of the quake.



BY CHRIS STEWART/THE CHRONICLE

The turn-of-the-century court house is expected to remain closed until Monday.

The small amount of raw sewage that leaked into Foster City's lagoons was not a health threat, residents were told yesterday. The lagoons remain open to recreational use.

SANTA CLARA COUNTY — Curtis Currin, 24, a worker at St. Joseph's seminary, died Wednesday after being crushed during the earthquake. That brought the county's death toll to four, including three people who died of heart attacks that could be attributed to the quake.

Damage to the county, excluding hard-hit Los Gatos, now is estimated at \$504 million, including \$135 million in San Jose.

At Stanford University, 26 buildings have been closed for inspection of structural damage, including Memorial Church, the Cummings Art Museum and the Graduate School of Business, as well as eight dorms and fraternity houses. About 200 students have been moved to other rooms on campus and 500 others spent last night in temporary quarters.

Damage to the university was thought likely to exceed \$10 million.

more problems. The community of Pajaro Dunes, south of Santa Cruz, was reportedly without water yesterday, forcing the county to truck in emergency supplies.

The death toll has been revised downward to five and damage now is estimated at \$326 million.

The latest figures show that about 600 people were injured and 10,000 displaced from their homes. An estimated 280 homes were destroyed, including 60 by fires caused by the earthquake. Another 80 homes are uninhabitable.

About 4,800 people spent Wednesday night in emergency shelters throughout the county.

SOLANO COUNTY — Inspectors yesterday found that the Benicia fire house sustained major structural damage during the quake. All firefighters and equipment have been moved out of the station.

SONOMA COUNTY — No new quake-related damage has been found. County building inspectors have been sent to San Francisco to render assistance.

Chronicle staff writers L. A. Chung, Rick DelVecchio, Martin Halstuk, Sharon McCormick, Pearl Stewart, Ray Tessler and Bill Workman and Chronicle correspondent Ron Sonenshine contributed to this report