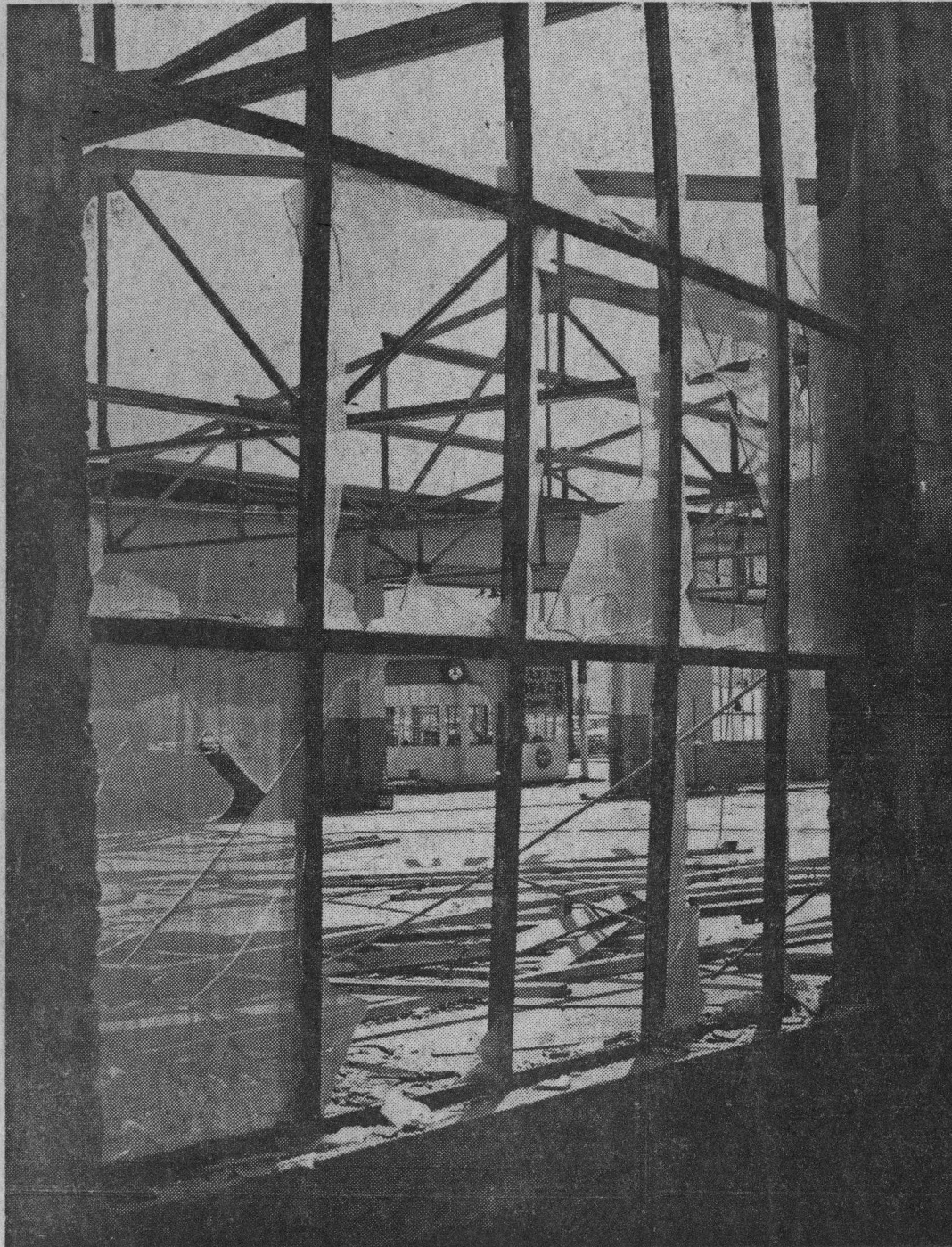


# Demolition Of Front Street Buildings Begins



Demolition work on Front street buildings has produced these results. The former Central One-Stop garage, above, is a roofless shell, while the old Greyhound depot is seen at left through a forlorn shattered window. A bulldozer was scheduled to knock down the depot walls today.

The two buildings, plus others in the block, are being

razed to prepare the 10-acre site for development by Park Plaza Associates. Park Plaza has an option on the million-dollar property with the redevelopment agency. Original plans were for a large shopping center anchored by a major department store, but a question has arisen whether downtown Santa Cruz is economically ripe for the project. Park Plaza's Keith Shaffer has told agency and city officials that major department store chains have

turned down bids to build at present.

A joint meeting of agency, city council and planning commission is set tonight to discuss Front street and other redevelopment questions.

When demolition is complete and site preparation finished, Park Plaza will start interest payments on the land, approximately \$36,000 a year. Under the present agreement, the group has until 1967 to start construction on the site.

◇ ◇ ◇

◇ ◇ ◇

◇ ◇ ◇

W  
S  
Un  
ele  
abr  
du  
S  
and  
Mo