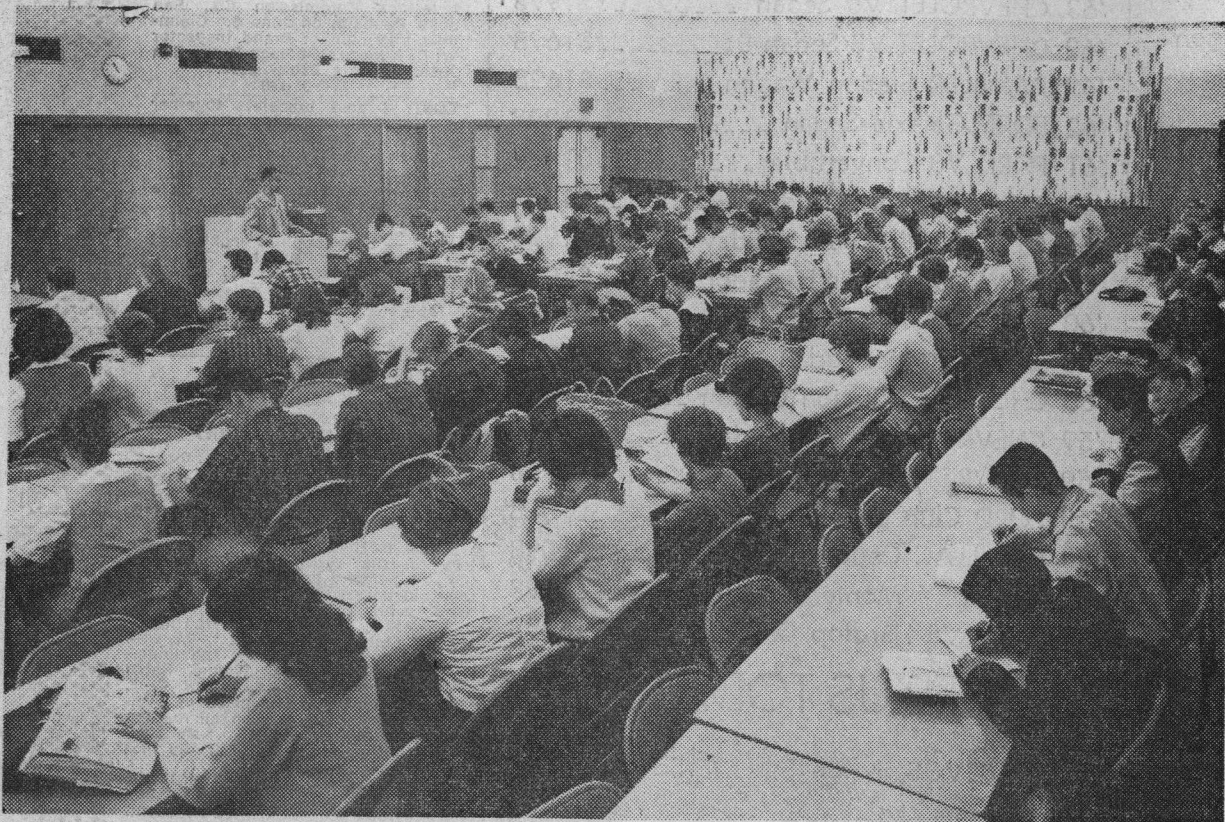


Tomorrow's Graduates Need SCHOOLS TODAY!

Inside Santa Cruz High School



Above is a picture of the study hall housed in the cafeteria. 135 students enjoy the cooking odors while studying at crowded tables. It is not adjacent to the library or any other source of reference material. There are no reference materials available.

Crowding is only one of the problems at Santa Cruz High. Obsolete and dangerous equipment in the manual arts classes, inadequate temporary structures, and badly deteriorating facilities impair adequate education of our students.



Probably one of the most dilapidated areas of our facilities are the boys' and girls' shower rooms at Santa Cruz High School. The boys' gymnasium was constructed in 1923 by a shop teacher and his high school woodworking classes. The enrollment of the school was 500 at the time. It will reach 1600 next year. Little has been done in the past 41 years to modify the original structure.

(Paid Advertisement)

The Stretch Is Gone!



At left is an analytical geometry class at Soquel High with 44 students. It is taught in a physics classroom because there are no regular mathematics classrooms available. The students fill every available desk and sit at counters around the room. Lack of classroom space has prevented the splitting of this class, and lack of proper types of classrooms has prevented the furnishing of a mathematics space for these students.



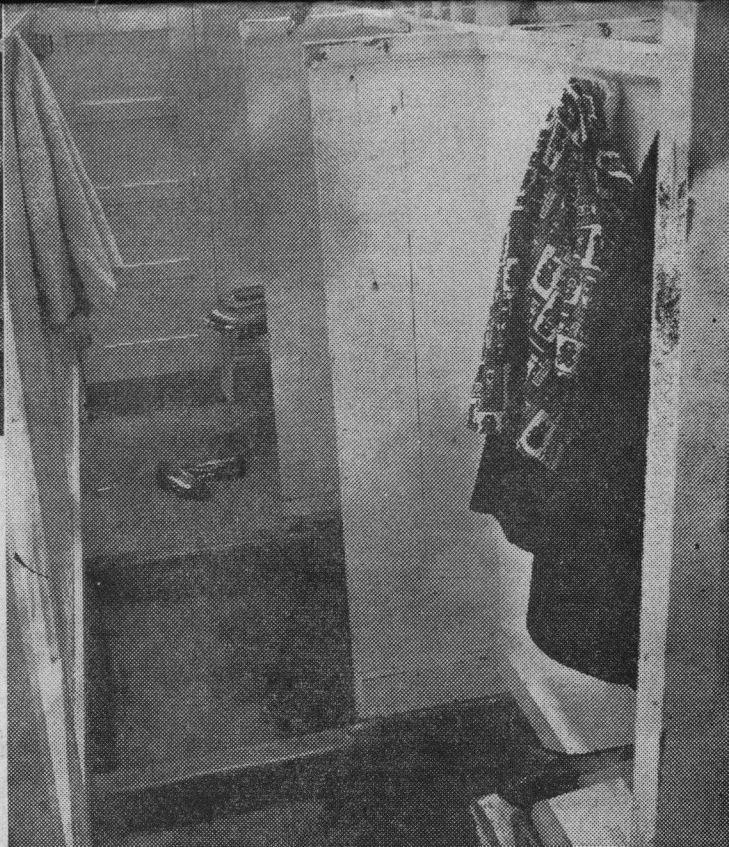
This picture shows one of the seven typing classes at Soquel High on an extended day. There are fifty typewriters in this classroom, and this is the capacity of the class. When it fills up, additional students must wait until another year to take the class, as there are insufficient classrooms of this type to meet the demands. This condition is true in many other specialized areas.

Third High School Needed!





This shower-locker room consists of cubicles for dressing and showering, although there are so few showers that operate it is no longer a requirement for girls to shower daily. Termites have attacked the walls, and door to dressing rooms come off the hinges repeatedly. If the gym is used for any student activity the boys must use the girls' toilet and the girls use the one toilet in the teachers' locker area.



HERE ARE JUST A FEW REASONS WHY BONDS ARE NEEDED:

CROWDING

Soquel High School

English 1 Class—45 students
History classes—35-36 students
Consumer Ed class—43 students
Six science classes with more students than lab stations
Metal and wood shops, full and closed

Santa Cruz High School

Business English class—33 students
Commercial classes—35-38 students
Cafeteria study hall—107 students
Fourteen foreign language classes with more students than space in laboratory
Vocational & Homemaking over-capacity

Inadequacy

Geometry in drafting room
English in shop classroom
Gym students without lockers for clothes
Five English classes meet on multi-purpose stage separated only by cloth curtain from classes on floor below

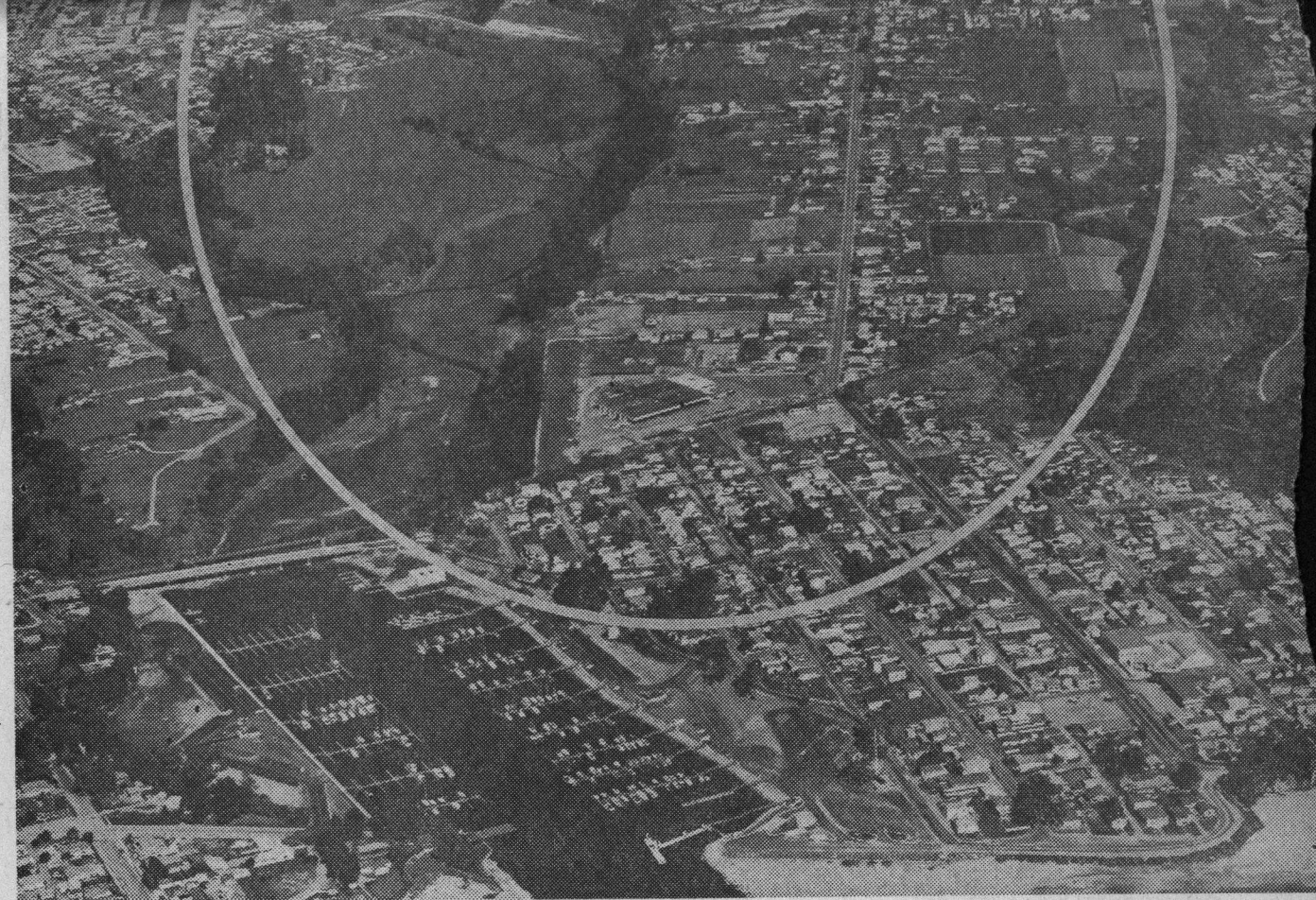
Obsolete gym and shower rooms
Obsolete print and wood shop equipment; much of it shutdown
Inadequate counseling center
World history class meets in sewing room
Temporary buildings used as classrooms

Growth

Enrollment in our high schools has grown 900 students in three years. In the next four years, 1400 additional high school students are expected. We are presently housing 22 per cent over our normal capacity, and only through building additional classrooms can the District meet its responsibility to educate the growing student population.



VOTE YES on HIGH SCHOOL BONDS



Conservative estimates show that we need classroom space for 4,337 students by 1967. This is 2,137 students beyond our capacity. Passage of the June 2nd bond election will provide space for 800 additional students at Soquel High School, 200 additional students at Santa Cruz High, and 12,000 additional students in a new third high school. Because these additional classrooms are vital to the maintenance of adequate education for our students, it is essential to act now!

School administration studies of existing student population, and near-term growth, show that a new high school located between the existing Santa Cruz and Soquel High Schools would be most convenient to the majority of families. This location also coincides with one of the future high school sites of the Santa Cruz General Plan for Future Development and the Planning Departments feel that the growth in this area will precede growth in other areas.



A YES vote on High School Bonds will alleviate overcrowding, provide for expansion of existing high schools, replace or repair obsolete facilities, and permit the construction of a third high school in the Live Oak-Harbor area for 1200 students . . . all at a minimal tax increase of 9c. For a \$16,250 value home this means—

ONLY 1¢ a DAY