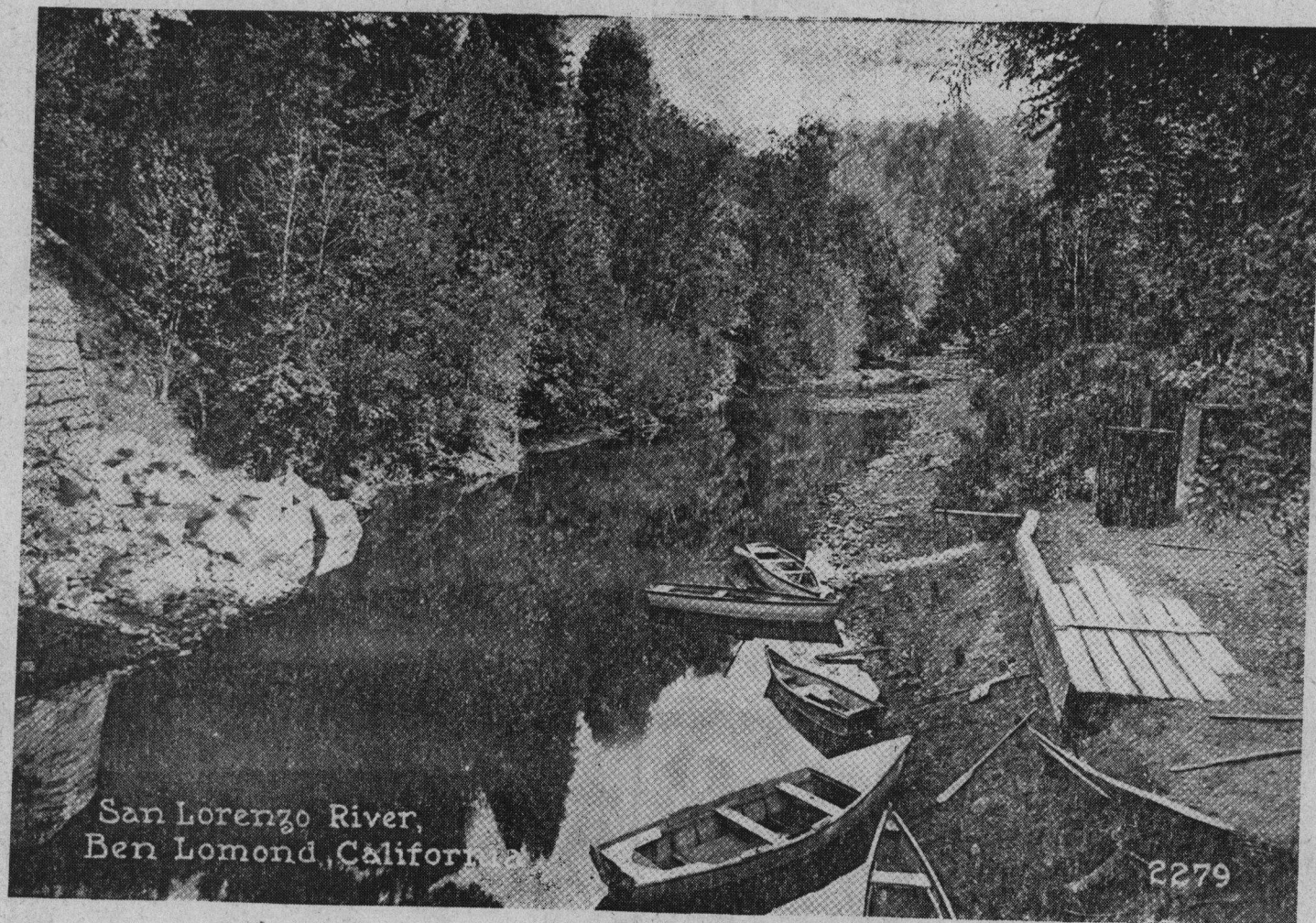


Lomond

A look into the Valley's past



San Lorenzo River,
Ben Lomond, California

Ben Lomond in the 1930's

Boating was a popular summer pastime in Ben Lomond on the San Lorenzo River in the 1920's and 1930's. Most people who lived along the river at that time had their own docks and dams. Many had lights along the bank of their property. The old Rowardennan Hotel and Dickenson Hotel had boats available for their guests. It was a colorful stretch of river from the bridge in the center of Ben Lomond south to where Holiday cabins were. Photo courtesy of Pat Leibenthal.