

Vista of the San Lorenzo valley

Text by Alan Jones

* * *

Photographs by Vester Dick



The Magic Triangle

An eight-year-old will blossom next Friday, with the opening of the Tree-Sea Triangle Tour through Santa Cruz city and county. The tour has been letted with erection of tri-color signs marking route.

Friday afternoon tour will be opened by the visitor and convention committee of the greater Santa Cruz chamber of commerce, which will host state chamber of commerce officials, local dignitaries officials, representatives of the American Automobile association, and local chamber members bus tour of the route. A stop on the two-hour will be made at Henry Cowell Redwoods park, where coffee and refreshments will be served. The tour ends at the Dream Inn, where reception is scheduled for the visiting guests.

The tour starts at city hall, and goes from there to the wharf, small craft harbor, DeLaveaga park, Glen Canyon, Felton, down Highway 9 to Inspiration Point and Santa Cruz, Highway 1 and High Street to the University of California campus, through Natural Bridges State park, along Westside Drive, and ends at the Dream Inn and the wharf again.

The tour idea originated eight years ago, and in 1959 the first brochures were printed describing points of interest along the original route. A shortage of funds and other factors prohibited posting signs on the route then, however. The new tour is longer, and takes in new points of interest such as the harbor and the campus.

Kay Dillon, who heads the visitor and convention bureau at the chamber, has provided the "continuity" force for development of the tour, and has worked on it from the inception in 1956.

New four-color brochures describing the tour and listing points of interest will be available at the chamber office with the opening.

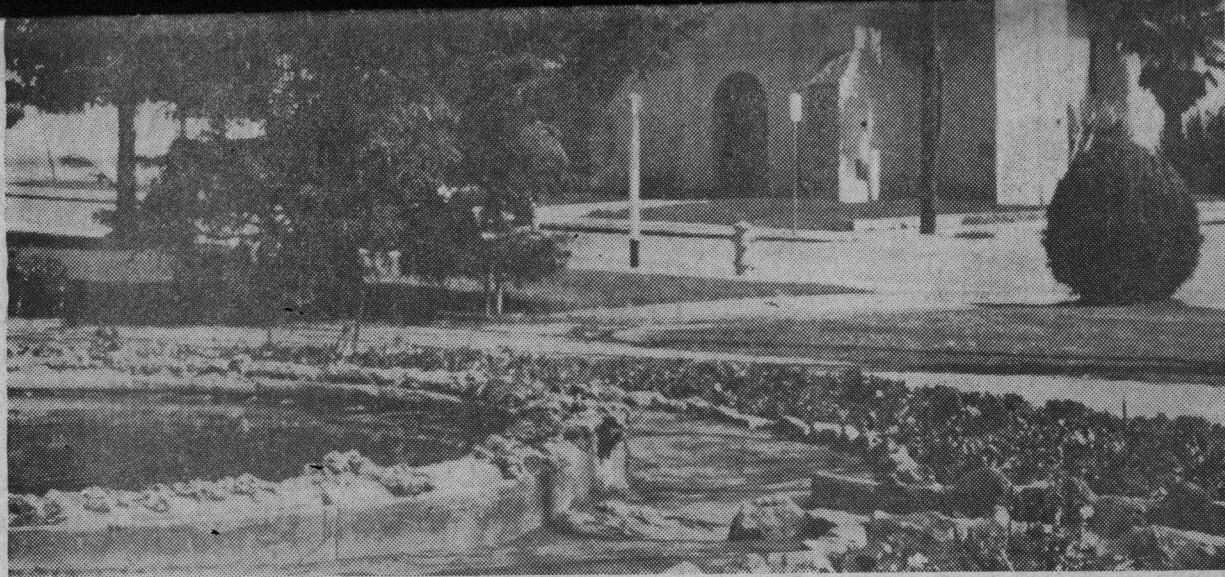
The tour's purpose? It provides a year-round attraction to visitors and tourists, providing an easily-followed way to see and enjoy the north county's natural beauty of redwoods, wooded valleys, and beaches, during times when Santa Cruz normally sees relatively few visitors.



A giant Cowell park redwood

Santa Cruz Sentinel

Family



The Santa Cruz mission

The tour can be taken in as little as one hour, or can be seen more leisurely over as long as two days.

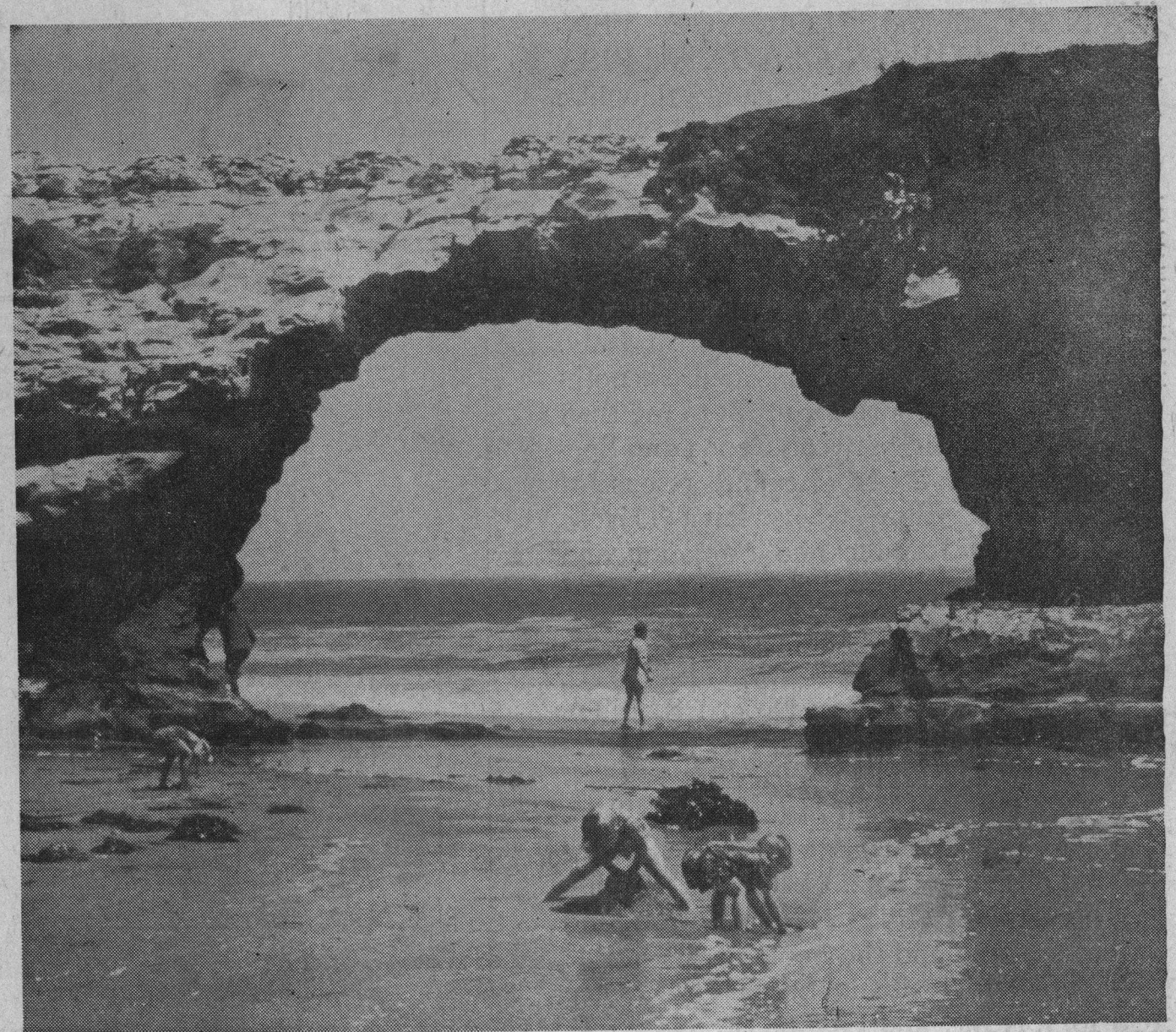
The views here are typical of those seen on the tour—a giant redwood in Cowell park, a vista of the San Lorenzo valley; the Santa Cruz mission; and the bay, from Natural Bridges to the surfer-filled water off Cowell beach.

Family Interest Section

Sunday, October 11, 1964



Surfers at Cowell beach



The beach at Natural Bridges park