

**WEDNESDAY**

**LATEST  
AFTERNOON QUAKE  
NEWS, PHOTOS,  
UPDATES**

October 18, 1989

**12-PAGE EARTHQUAKE SECTION**

# San Jose Mercury News

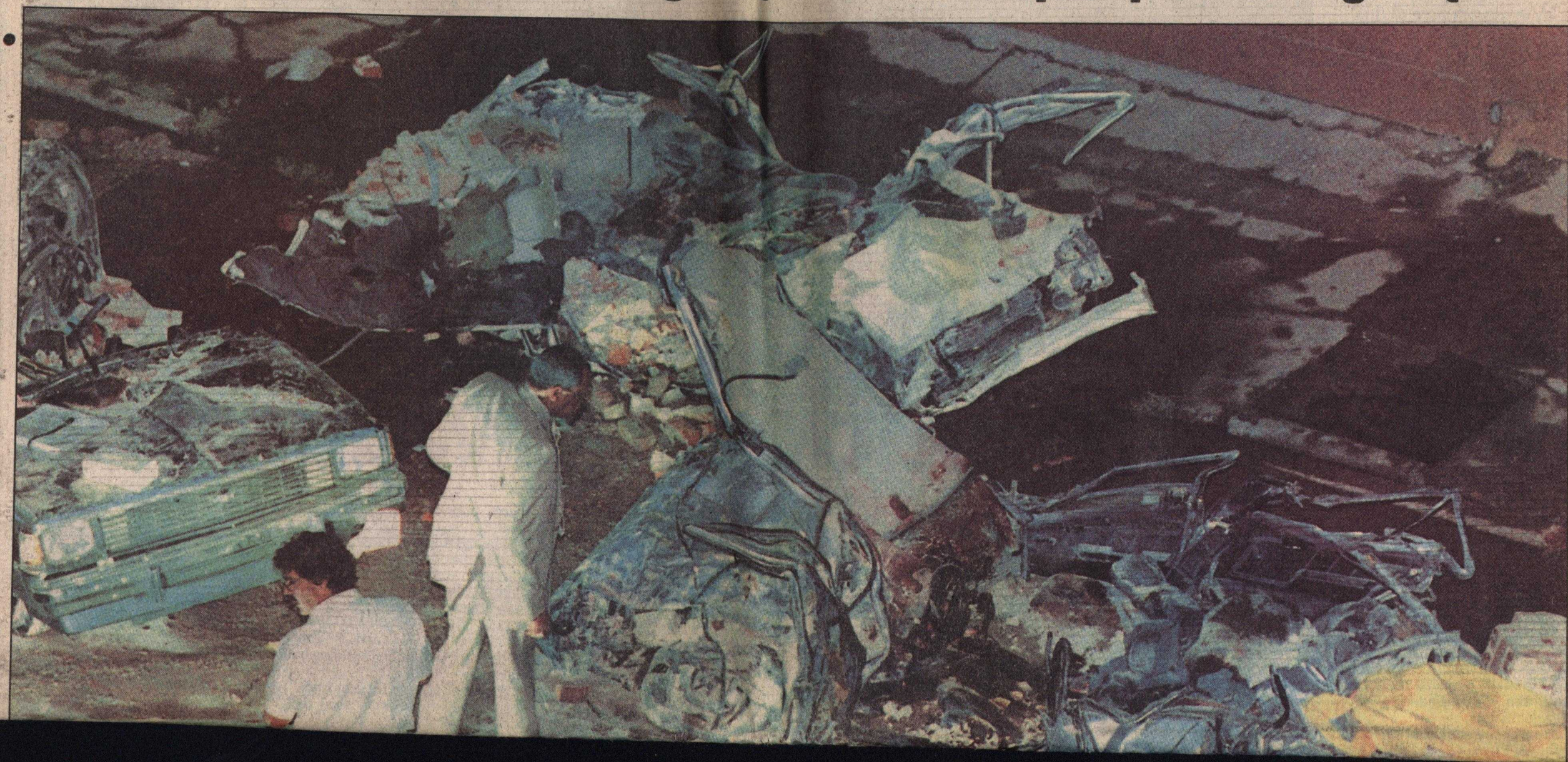
Serving Northern California Since 1851

25 cents

# 'DEVASTATING'

- Death toll at 271, story below
- Nimitz crushes cars, Page 2Q

- Fury in Santa Cruz, Page 3Q
- Series postponed, Page 9Q







Karen Borchers — Mercury News

The top part of a four-story building at Fifth and Townsend streets in San Francisco fell and crushed several cars, killing some occupants and trapping others

## On the morning after, disaster's reality dawns

By Christopher H. Schmitt  
Mercury News Staff Writer

The devastation of Tuesday's catastrophic earthquake continued to unfold today, even as a sobering new reality began to set in: how long it will take to recover from the quake's stunning fury.

Tuesday's rush-hour quake of 7.0 on the Richter scale — now officially listed as the nation's second-deadliest ever, the worst since the Bay Area's disastrous quake of 1906 — made for a surreal scene as Wednesday dawned. Damage was everywhere.

The full scope of the quake continued to slowly emerge as officials made contact with hard-hit areas, where many telephones were cut off. As many as 1 million people were without power and other services, authorities reported.

"This is just a devastating, terrible, terrible situation beyond everybody's imagination," said Marty Boyer, an Alameda County spokesman.

Lt. Gov. Leo McCarthy this morning put the death toll at 271, with at least 650 reported injured.

In Oakland, scene of the quake's single worst catastrophe, at least 56 were confirmed dead in the collapse of at least a mile of elevated Interstate 880 onto cars below. There were indications the tally could reach more than 200.

The fate of one of the sporting world's premier events, baseball's World Series, still hung in the balance today. Game 3 between the San Francisco Giants and Oakland A's had yet to be rescheduled and there was speculation that the rest of the games could be moved to Southern California.

San Francisco, though spared the shock of a single incident like the East

See *QUAKE*, Page 11Q

### Digging out

*The Bay Area began digging out from the worst earthquake since 1906 this morning:*

■ **Highways:** The Bay Bridge and parts of Interstate 880 are likely to be closed for days. Other highways have already reopened or will be opened today.

■ **Airports:** All airports reopened.

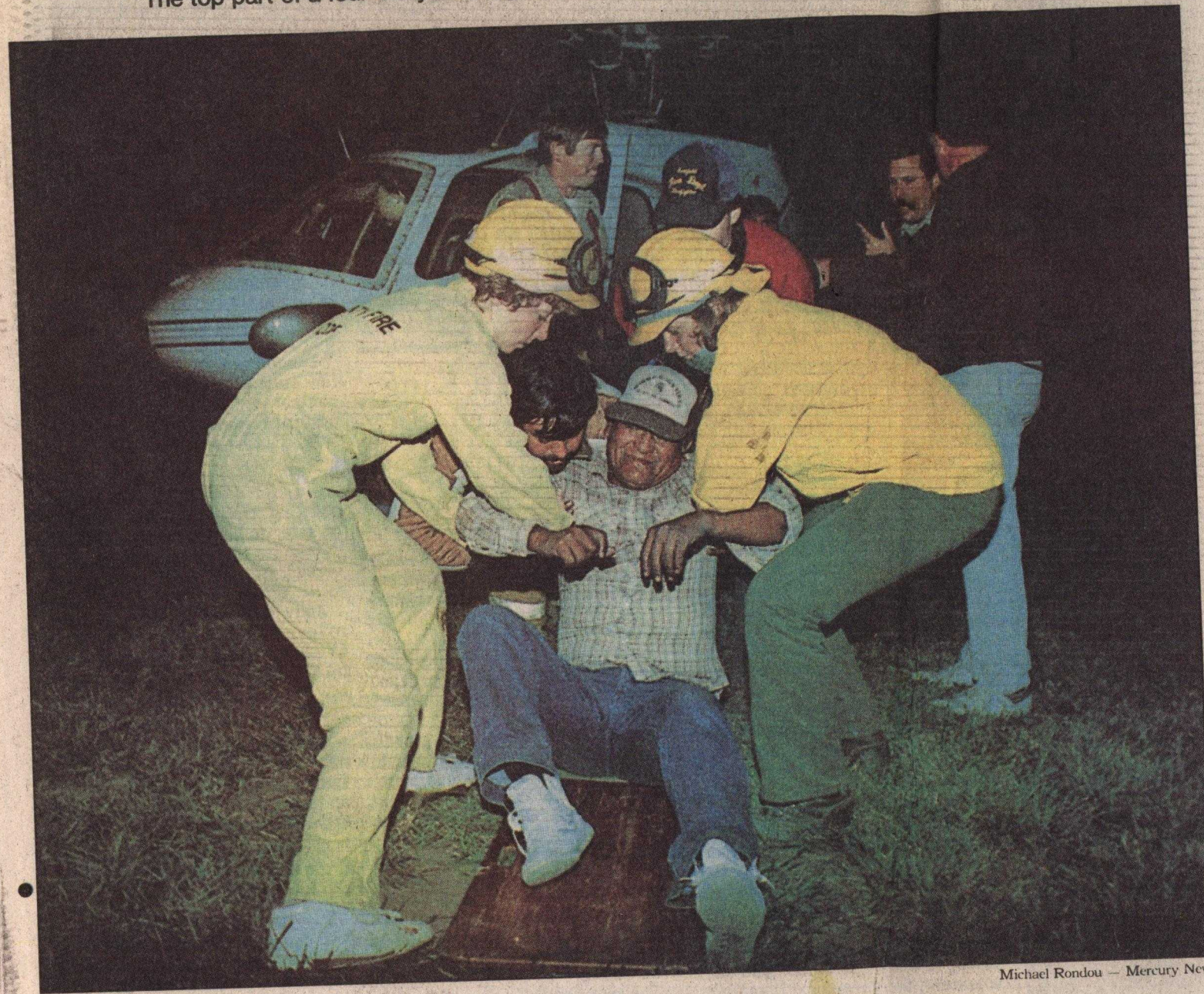
■ **Businesses:** Numerous businesses were closed today but, except for San Francisco, most were expected to be open Thursday.

■ **Electricity:** Worst outages in Santa Cruz and Salinas. Scattered elsewhere, but it could be days in some areas before service returns.

■ **Mass transit:** BART and CalTrain are running reduced service. Officials were uncertain when full service would be restored.

### Call our Earthquake Action Line

Earthquake details, starting Thursday, can be obtained in San Jose and surrounding areas by calling the Mercury News Action Line: (408) 287-1222; Peninsula, (415) 494-1100; Alameda County, (415) 490-7481.



Michael Rondou — Mercury News

Rescue workers carry Norberto Laureano from a helicopter at Valley Medical Center. The man had been struck by a

wine barrel as the quake hit when he was working at Silver Mountain Winery in the Santa Cruz Mountains.