

New Bonny Doon Airport To Be Dedicated Today

By Don Becker

Bonny Doon Village airport, set in mountain greenery amid much scenery, officially opens its airstrip operations today.

Dedication ceremonies, with Assemblyman Glenn Coolidge and State Senator Don Grunsky expected to be on hand along with members of the county board of supervisors and the planning commission, will be staged at 11 o'clock. The public is invited.

Planes from all over northern California are expected to wing to the newly-reactivated airport, which is located in the beauty-filled hills overlooking Felton and the ocean just off the Empire grade. They will land on a sleekly paved 2400-foot runway.

Today's opening is just the beginning, according to owner Marion Nichols, "the flying realtor." Owner Nichols sees a whole new way of life being established as a result of his airport on the mountain plateau.

Nichols foresees the day when his airport will be surrounded

by a plush residential district whose residents will commute by plane to their jobs.

The airport itself stands to be unique among strips. Nichols plans to install a swimming pool, cottages, a fancy restaurant, a general store and to clear away space to accommodate between 200 and 300 private planes.

The whole thing is going to be first cabin. For cottages, Nichols is making an intensive study of representative buildings from countries such as France, England, Ireland, Spain and other European nations.

"When people come here," Nichols glowed, "they will be able to spend the night, take a swim, eat in a fine restaurant and just generally take it easy. There's nothing like it anywhere. People will talk about those neat little cottages."

"We will start work on pool and store and restaurant sometime this spring. We are still studying the cottages and we want to make them as authentic as possible. I don't know when we will be ready to begin on those."

"This is going to be a nice quiet little field," Nichols continued. There won't be any student

flyers here nor will there be any commercial service. The field is strictly for private use."

"We expect to have a lot of people up from Santa Cruz when we get our restaurant built. It's a beautiful drive up here and it isn't too far."

Right now, the Bonny Doon village airport is a long way from completion. On the 40 acres of land which make up the strip area, only two buildings are seen. One is a newly-painted red hangar and the other is Nichols' real estate office. Freshly planted lawn lines the east side of the field. Trees, dense in the fertile red dirt, line the west side.

As for flying, Nichols says, "We have an awful lot of flying days up here. At 2000 feet we are above most of the fog. Rain, the flying realtor notes, usually comes at night and seldom interferes with flying."

"Why the whole situation is ideal," Nichols enthuses. "There is nothing like it anywhere." Sometime in the future, Nichols says he plans to install lights. It will be a 24-hour field.

Flying in the area is magnificent. This we can say first hand. Nichols took us up on a picture taking tour of the area, and frankly, the whole thing has to be seen to be appreciated. From 2000 feet one can see the rugged mountains of the Coast range, Santa Cruz, the entire San Lorenzo valley and sandy beaches from here to Monterey.

Looking east, great black cumulonimbus rain clouds were forming in the central mountains. To the west, the sun sparkled off the rich blue of the ocean.

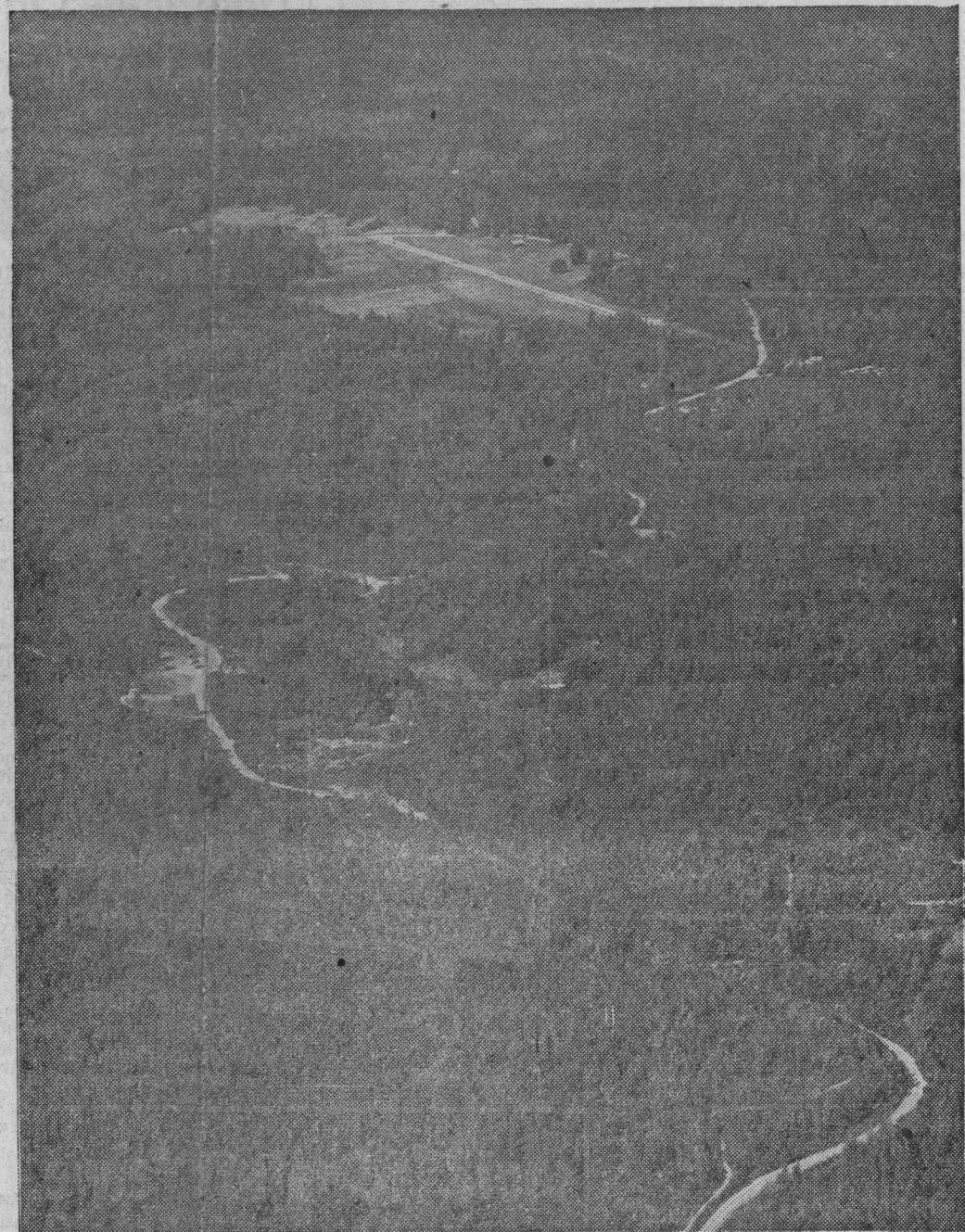
"See that down there," Nichols called from the flying seat of his \$20,000 Cessna 180, "that whole area will be filled with houses one of these days." Looking down, one could see a small cleared area surrounded by trees.

"Houses will be built on acre lots. It's going to be strictly zoned. No chickens or anything like that. The homes won't have to be big, but they will be nice."

Nichols dipped his wing and exposed the whole area. The highways cut in and out across the land. The homes already there looked tiny from the sky.

"One of these days this is going to be a great place. I don't see how it can miss."

Homes To Replace Forests



This beautiful photograph shows the Bonny Doon airport and its surrounding forests. The

subdivider hopes to make this a wilderness paradise in the

future with a plush residential district, fancy restaurant, swimming pool and a general store.

Close-up Of Landing Strip



PUBLIC NOTICE

NOTICE TO CREDITORS No. 15, 309

In the Superior Court of the State of California, in and for the County of Santa Cruz.

In the Matter of the Estate of SYDNEY BRITAIN, also known as SYDNEY H. BRITAIN, Deceased.

Notice Is Hereby Given by the Undersigned, FRANCES MARGARET GENTRY, Executrix of the Last Will and Testament of the estate of Sydney Britain, also known as Sydney H. Britain, deceased, to the creditors of, and all persons having claims against the said deceased, or said estate, to file them, with the necessary vouchers, in the office of the Clerk of the above named Court (which said office is situate in the Court House in the City of Santa Cruz in said County and State), within six months after the first publication of this notice made on the 13th day of October, 1957, or present and exhibit them, with the necessary vouchers, within said period, to the said Executrix at the office of J. FRANK MURPHY and EUGENE J. ADAMS, Attorneys at Law in the City of Santa Cruz, County of Santa Cruz, State of California, which said last named office, the undersigned selects as the place of business in all matters connected with said estate.

FRANCES MARGARET GENTRY, Executrix of the Estate of said deceased.

Dated October 11, 1957.
J. FRANK MURPHY, and
EUGENE J. ADAMS
Attorneys for said Executrix
1522 Pacific Ave.,
Santa Cruz, California.
Oct. 13, 20, 27; Nov. 3

ARTHRITIS? RHEUMATISM?

If you suffer from minor Arthritic, Rheumatic-like pains caused by stiff, aching joints, try new improved ARTHONUL. The ARTHONUL formula is a medically formulated preparation specially developed to give quick, effective, temporary partial relief from minor pains of Arthritis, Rheumatism, Sciatica. ARTHONUL contains a special pain-relieving ingredient acclaimed by medical authorities as safe as aspirin, yet ARTHONUL contains NO narcotic—NO habit forming, NO harmful drugs. AR-

PUBLIC NOTICE

NOTICE OF TIME APPOINTED FOR PROVING WILL, ETC. No. 15,347

In the Superior Court of the State of California, in and for the County of Santa Cruz.

In the Matter of the Estate of ROY E. STIMMEL, Deceased.

Notice is hereby given that a petition for the probate of the will of ROY E. STIMMEL, deceased, and for the issuance to petitioner, NELLIE I. STIMMEL, of Letters Testamentary has been filed in this court, and that October 25, 1957 at 10:00 o'clock A. M. of said day, and the courtroom of said court, in the courthouse, in the City of Santa Cruz, County of Santa Cruz, State of California, have been fixed as the time and place for the hearing of said petition, when and where all persons interested may appear and contest the same and show cause why said petition should not be granted. Reference is hereby made to said Petition for further particulars.

Dated October 11, 1957.
TOM M. KELLEY, Clerk.
By Mathilda Rossi,
Deputy Clerk.

LUCAS WYCKOFF & MILLER
Attorneys for Petitioner.
113 Cooper Street,
Santa Cruz, California.
Oct. 13, 14 and 23

NOTICE OF HEARING PETITION FOR PROBATE OF WILL No. 15,343

In the Superior Court of the State of California, in and for the County of Santa Cruz.

In the Matter of the Estate of MARCELLA RUTH MATTHEWS GOTTLUND, Deceased.

NOTICE IS HEREBY given that DUNCAN A. McLEOD has filed herein a petition for probate of the will of the above named decedent and for issuance of Letters Testamentary thereon to said petitioner, reference to which is made for further particulars, and that the time and place of hearing the same has been set for November 1, 1957 at Ten o'clock a.m., in the courtroom of the Presiding Judge of said Court at the courthouse in the City of Santa Cruz, County of Santa Cruz.

PUBLIC NOTICE

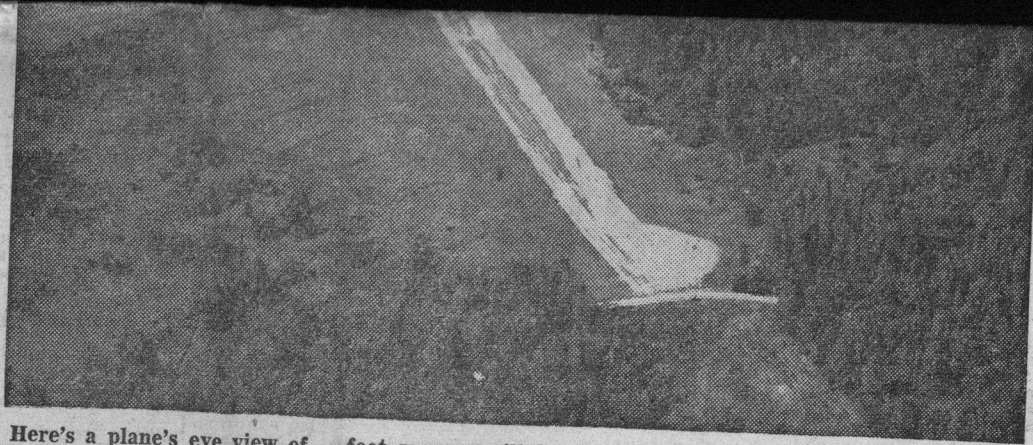
NOTICE TO CREDITORS No. 15,286

In the Superior Court of the State of California, in and for the County of Santa Cruz.

In the Matter of the Estate of ELISABETH ROSA FRIEDLAENDER, also known as E. R. FRIEDLAENDER, and ELISABETH FRIEDLAENDER, Deceased.

Notice Is Hereby Given by the Undersigned, Administrator with the Will Annexed of the estate of Elisabeth Rosa Friedlaender, deceased, to the creditors of, and all persons hav-

with the
office of
Court
in the
Santa
, with-
publica-
ne 22nd
present
neces-
period, to
ne Will
ILLER,
st Na-
ity of
Clara,
ld last
selects
l mat-
ate.
DER,
e Will
of said



Here's a plane's eye view of
the Bonny Doon airport which
officially opens today. The 2400-

foot runway will be dedicated
in ceremonies this morning at
11 o'clock. The public is invited.

Planes from all sections of the
state are expected to use the
airport.

Historical Book

Red Cross Course

Slated Wednesday