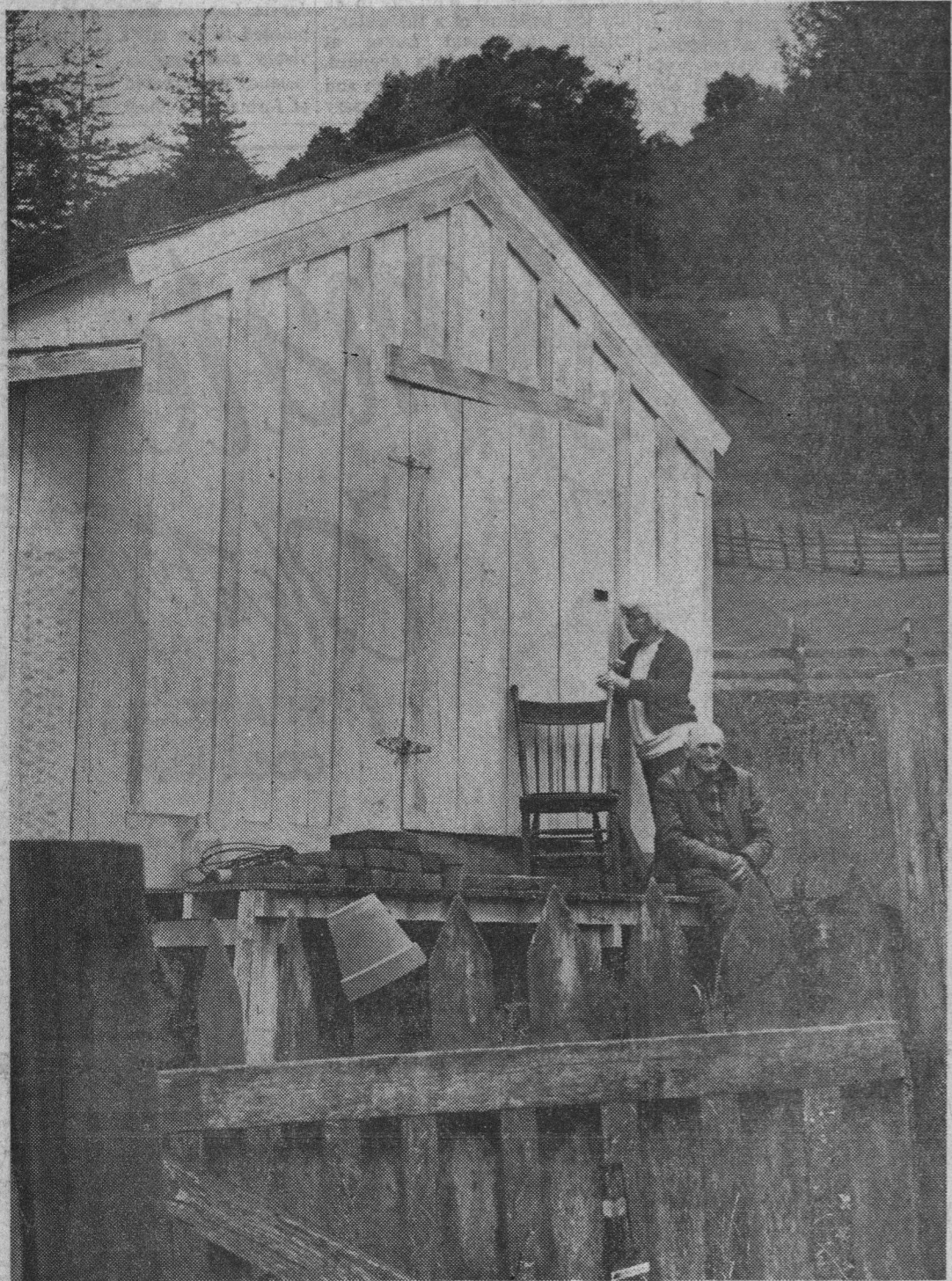


4/26/64

# Old Barn's Weathered Boards Hold Memories Of 1870s



Charlie and his wife, La Salle, who taught Happy Valley school for 38 years, look over the old Waddell home which still stands on their ranch property. Now being

used as a storage shed it dates from 1857-8 and was used as a logging camp home by the Waddell family before they moved up the coast to establish a mill above Davenport on what is now Waddell Creek.

By Margaret Koch  
Sentinel Staff Writer

There's a tinkle of cow bells from the hill behind the old barn ... inside a lamb is crying. Chickens cluck and scratch for treasure in the dirt out front.

This is one of the most painted barns in Santa Cruz county. More artists have recorded it for posterity — recognizable or not — than you can shake a hay rake at.

The barn was built in 1870 and belongs to Charles P. Bachelder, better known for the past 77 years as Charlie. It was built by his father who acquired the property at 1299 Granite Creek road in 1868.

Charlie was born in the house he lives in today; it was built by his father in 1883. A two-story, white frame structure, it stands on the hill across the road from the barn.

Before Charlie's father came to live on the property, it had belonged to Waddell, Hihn and Drennan Lumber company.

"Instead of 'Granite Creek' this area was known as 'Waddell Gulch' in those days," Charlie explained.

And an old one-story house in which the Waddell family lived for awhile still stands on Bachelder's property. He and his wife use it for storage. It was built in 1857 or 1858, he isn't positive which, and a lean-to was added later. Charlie's own father lived in it before he married and built the family home in what is now an apple orchard.

"My father's first job in Santa Cruz county was driving an ox team for Jordan and Davis," Bachelder recalled.

Originally the Bachelder ranch comprised more than 200 acres and reached east to Branciforte creek. Although the property lies only five miles north of Santa Cruz, years ago in bad weather the roads were so impassable that Charlie's three sisters boarded "in town" to attend high school during the winter months.

One of his treasured possessions is the square grand piano upon which his sisters learned to play. Their grandmother brought it around the Horn to San Francisco in 1862, the year it was made. It is a registered Steinway



number 4056.

Charlie's memory of Granite Creek goes back not only to things he observed himself, but to things his father told him about.

Like the Call brothers. Nate and Henry had a brickyard opposite today's George Washington Memorial park — they dug clay, made and sold bricks there.

Henry Call at one time in the 1800s owned most of DeLaveaga and ran cattle there," he said.

He, one of the original 49ers, worked for Charlie's father. Later, he came to spend the last two years of his life on the

Bachelder place, among friends. "I buried him there," Charlie said.

Today Charlie whets his memory every once in awhile by running through an 1892 log book from the later Waddell lumber mill up the coast above Davenport. Those loggers had their fun too, he likes to point out: the list of names included "Charley Chinaman" and "Brigum Young."

Bachelder has spent all of his 77 years in Santa Cruz county; he'll be 78 next month. Most of his life he has been busy with two time-honored pursuits which date from Early California days — raising cattle and cutting timber.

It's a way of life that has almost vanished from the contemporary scene.

However, Charlie doesn't worry about the future.

"The world is moving so fast today that no one knows what tomorrow will bring," he commented.

In the meanwhile there are cows to milk, a team of horses to feed, lambs to butcher—and six mother cats, all expecting families any minute.

There are five U.S. penitentiaries: Atlanta, Leavenworth, Lewisburg, McNeil Island and Terre Haute.

Artists love it ... One of the most-painted barns in Santa Cruz county. It was built in the 1870s by Charlie Bachelder's father, Charles Perkins Bachelder, and is still in use today on the family farm on Granite Creek road.

READ THE SENTINEL  
CLASSIFIED ADS

**VOLVO**

SALES & SERVICE  
The Proven Quality Automobile

**DEWEY EASTMAN**  
521 Front St. GA 3-5820

e, La  
y Val-  
look  
home  
their  
being

used as a storage shed it dates from 1857-8 and was used as a logging camp home by the Waddell family before they moved up the coast to establish a mill above Davenport on what is now Waddell Creek.

cisco in 1862, the year it was made. It is a registered Steinway

and Henry had a brickyard just opposite today's George Washington Memorial park — they dug clay, made and sold the bricks there.

"Henry Call at one time in the 1850s owned most of DeLaveaga park and ran cattle there," he said.

Nate, one of the original 49ers, had worked for Charlie's father. Later on, he came to spend the last two years of his life on the

mill up the coast above Davenport. Those loggers had their fun too, he likes to point out: the list of names included "Charley Chinaman" and "Brigum Young."

Bachelder has spent all of his 77 years in Santa Cruz county; he'll be 78 next month. Most of his life he has been busy with two time-honored pursuits which date from Early California days —raising cattle and cutting timber.

morrow will bring," he commented.

In the meanwhile there are cows to milk, a team of horses to feed, lambs to butcher—and six mother cats, all expecting families any minute.

There are five U.S. penitentiaries: Atlanta, Leavenworth, Lewisburg, McNeil Island and Terre Haute.



The fine old desk was his father's . . . Charlie looks over the old Waddell lumber mill record which dates from 1873. Charlie, his wife, LaSalle, and brother, Sam, still live in the house he was born in. It dates from 1883.

#### GHANA SEEKS RED AID

Moscow (AP).—Ghana's minister of agriculture, Krobo Edusei, has arrived in Moscow and will ask, the Tass news agency reported, for Soviet experts to help Ghana develop deep sea fishing.

#### PAY RAISE PROTEST