

societies

Historical Group Forms To Preserve County Sites

Santa Cruz County is about to be inventoried, historically speaking.

A survey of every portion of the county will be undertaken by a new group that incorporat-

ed this week — the Santa Cruz Society for Historical Preservation.

This group is a non-profit county-wide organization devoted to exploring, recording, researching and arranging for the recognition and preservation of county historical sites, landmarks and buildings. Membership is open to the public.

The group, headed by President David McFadden, Cabrillo College librarian, also will serve as an advisory committee to the Santa Cruz County Board of Supervisors.

In a happy coincidence, the group was in the process of organization before a request came from the California State Department of Parks and Recreation asking that such a committee be formed in Santa Cruz County.

The county-wide group was formed during a series of meetings started last spring and instigated by historical articles in The Sentinel written by Margaret Koch and illustrated by Will Shepherd. Instrumental in doing the legal work of organization was attorney Hubert Wyckoff of Watsonville.

Officers of the new group emphasized that the organization is not replacing any existing county historical group. Instead, it is designed to work county-wide, coordinating and aiding efforts of existing local groups.

The new group plans to affiliate promptly with the National Trust for Historic Preservation and the Congress of Historical Societies.

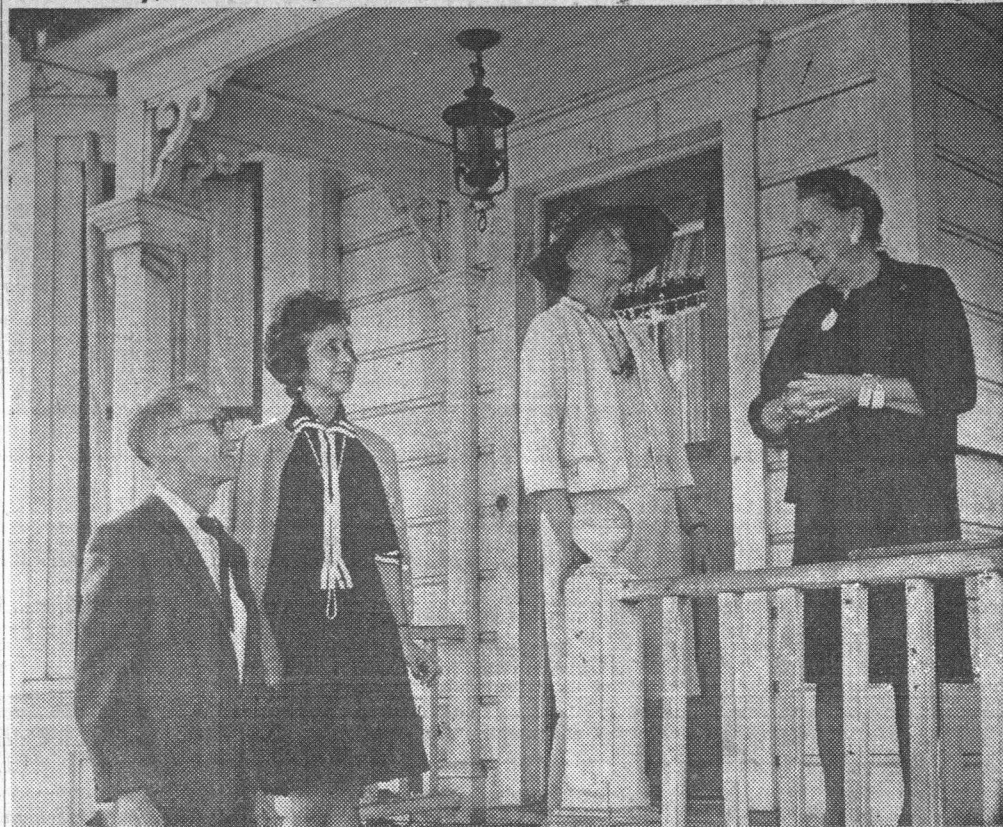
First project will be a county-wide survey of historical sites, buildings and landmarks. Any person with information may mail it to Will Shepherd at the County Center, 701 Ocean Street, Santa Cruz.

The board of directors of the new group is composed of nine residents of the Watsonville area headed by Wyckoff and Mrs. Mabel Rowe Curtis of the Pajaro Historical Association, and also includes Mrs. Koch, Shepherd, McFadden, Mrs. Alice Earl Wilder, Fred D. McPherson Jr., Dave Armstrong, Mrs. Ada Jane Leamy, Mrs. Charles McLean, Mrs. Elizabeth Calcinano, George Shaw, Gene Zimmerman, Mrs. Paul Pfeiffer, Mrs. Leon Rowland and Mrs. Amelia Romeo.

Santa Cruz Sentinel

Wednesday, October 2, 1968

Page 9



Officers of the newly-incorporated Santa Cruz County Society for Historical Preservation look over one of Santa Cruz' older homes. They are from the left: David McFadden, pres-

ident; Mrs. Amelia Romeo, treasurer; Mrs. Alice Earl Wilder, vice president, and Mrs. Ada Jane Leamy, secretary.

anky
and
en a
atter
sher
eeth
umb-
pose.
as a
r of
phila
and
was
eyes
the

School Science Fair Set

The Santa Cruz County Office of Education will host the Ninth Annual Tri-County Science Fair which will be held April 16-20, 1969 at the county fairgrounds, Watsonville.

Dr. Richard R. Fickel, county superintendent of schools, said that Harold W. Kolbe, principal of Natural Bridges School, will serve as president the sponsoring fair association.

An innovation this year, Dr. Fickel said, is the naming of a number of community leaders as associates who will assist the planning staff and provide information about the fair to local service, fraternal and civic groups and industrial, com-