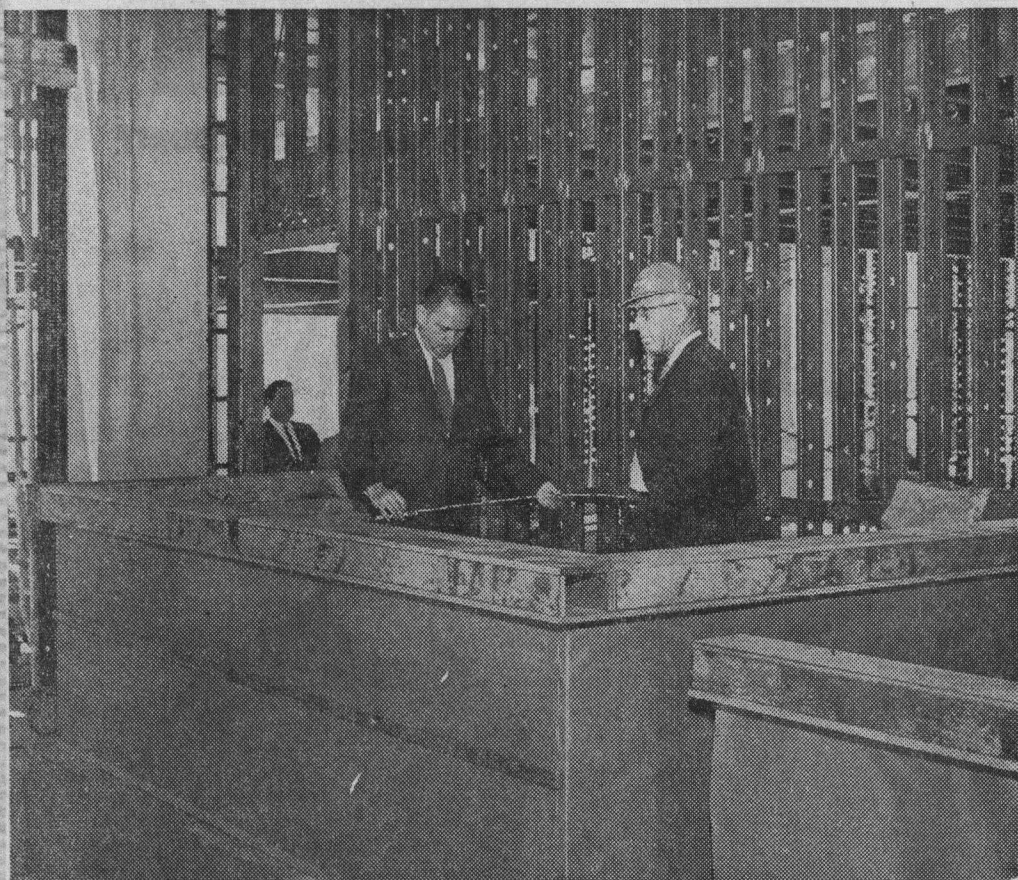


A Day In New Court



The first trial in the new county courts building took place yesterday as judges, county officials, construction men and local bar association representative tried on the new courtroom arrangements for size and fit. Decision of the judges and bar, who had staged a revolt over courtroom plans six months ago, was not entirely favorable, nor wholly negative. While architect Burton Rockwell, top photo, third from left, took notes on their comments, Judges Charles Franich, Donald May and Gilbert Perry had assistant construction superintendent Ches Shaver measure part of the room. Franich commented that "it looks like we are re-modelling before the building is built." He also noted the open duct work in the office building is "very ugly," and said, "I wish

we could cut down the outside corridor and lengthen the courtrooms." "This is like living under a bridge abutment," bar association representative Ron Dunton commented about the exposed concrete beams. Judge May and Perry, seen measuring a mock-up of their desk in the picture at bottom, also had several suggestions for arrangement of seating and furniture in the rooms. Rockwell said the furniture changes could be easily made. Rough wooden forms were used to simulate furniture in the unfinished courtroom. The rooms measure 40 by 40 feet, a square design most judges did not appreciate. "It seems that I'm the only one that likes it at all," Municipal Court Judge May commented.



Premmer Street Residents To Get