

CALIFORNIA HIGHWAY PATROL

Bio-H 8-7-13 Fallen officer to be honored

Portion of Highway 1 to be named CHP Officer A. Donald Hoover Memorial Highway

By **BONNIE HORGOS**

bhorgos@santacruzsentinel.com

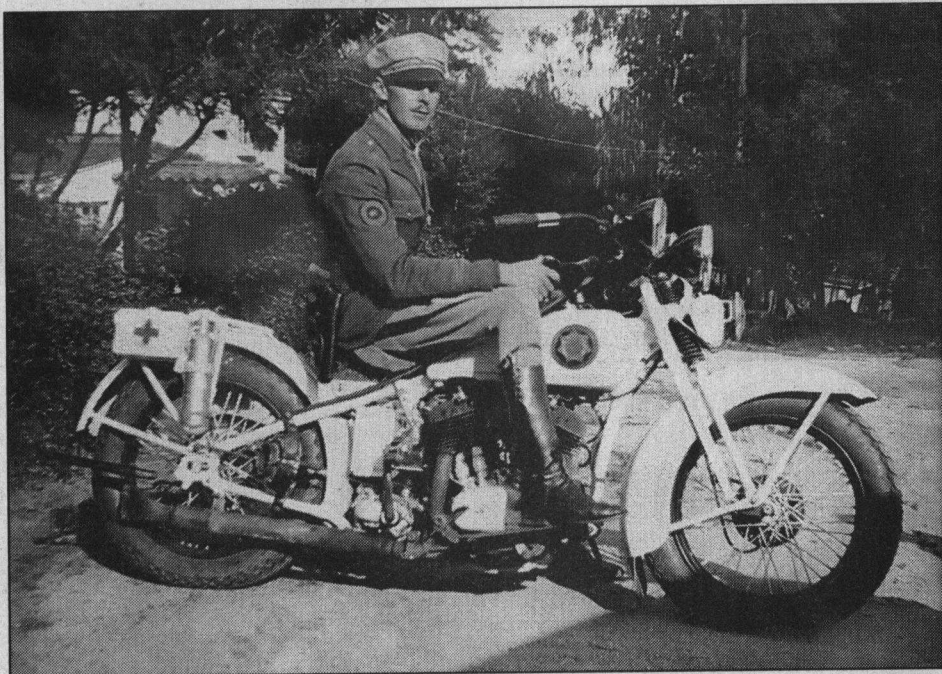
APTOS — The portion of Highway 1 between Park Avenue and La Fonda Avenue will take on a new identity this month: a tribute to the first California Highway Patrol officer to be killed in the line of duty in Santa Cruz County.

The Santa Cruz CHP office is hosting a ceremony to unveil the CHP Officer A. Donald Hoover Memorial Highway on Aug. 21. In addition to Caltrans presenting signs to honor Hoover, a Capitola chaplain will lead a prayer, and there will be a performance of the national anthem and traditional bagpipe songs.

Hoover was killed in 1934 while riding home on the old Santa Cruz-Watsonville Highway on his department-issue motorcycle. He hit a car that turned in front of him near Slaughterhouse Curve, which is now Soquel Drive near Commercial Way.

Caltrans approved two signs for Hoover: one on northbound Highway 1 south of Park Avenue, and one near La Fonda Avenue on southbound Highway 1, said CHP officer Bradley Sadek.

Hoover is one of three CHP officers who have died on duty in Santa Cruz County. The other CHP officers who died in the line of duty in the county are Lt. Michael Walker, who was struck on Highway 17 in 2005, and officer John Pedro, who died in a solo crash in South County in 2002. There's a section



CONTRIBUTED

Donald Albert Hoover was a California Highway Patrol motorcycle officer who died on duty in 1934.

of Highway 1 in Watsonville named after Pedro.

Since the agency formed in 1929, 220 CHP officers have been killed on duty in the state.

While 79 years have past since the incident, it's important to remember Hoover's contributions to the county, Sadek said.

The CHP first looked into naming a part of Highway 1 after Hoover in 2010. The project took on even more meaning, though, after the Feb. 26 slaying of Santa Cruz police detective Sgt. Loran "Butch" Baker and detective Elizabeth Butler, the city's first officers killed in the line

of duty, Sadek said.

"In Santa Cruz with the recent deaths of officers, it gives us the opportunity to highlight the sacrifice that law enforcement makes," Sadek said.

And honoring those who have died is one of Caltrans' many important duties, said Susana Cruz, Caltrans spokeswoman. The state agency generally puts up one or two memorial signs a year, she said.

"It's a very good way to acknowledge the severity of dangers out there," she said.

Follow Sentinel reporter Bonnie Horgos at [Twitter.com/bhorgos](https://twitter.com/bhorgos)

IF YOU GO

CHP OFFICER
A. DONALD HOOVER
MEMORIAL HIGHWAY

WHAT: The California Highway Patrol is hosting a dedication and unveiling ceremony of the CHP Officer A. Donald Hoover Memorial Highway.

WHEN: 10 a.m. Aug. 21; RSVP required by Friday

WHERE: California Highway Patrol, Santa Cruz Office, 10395 Soquel Drive, Aptos

DETAILS: To reserve a seat at the event, call 831-662-0511